

# MATTER OF FACT

a free community newsletter published by  
Venus Bay Community Centre

JULY 2022 Vol 7 Issue 13



Providing information for  
Venus Bay, Tarwin Lower  
and Walkerville district

**VENUS BAY**  
COMMUNITY CENTRE

We acknowledge the Traditional Owners of Country throughout Australia and recognise their continuing connection to land, waters and culture.

We pay our respects to their Elders past, present and emerging.

# JOIN US



**Tues**

JULY

**19**

**6-7:30pm**

at the Venus Bay Community Centre

Community Energy Resilience and Reliability Feasibility Study at Venus Bay

## Project Launch

Come along and find out what energy reliability could look like in Venus Bay, and discuss what resilience means to our community. Meet the project team, have your say and find out how you can be involved.

*This project depends on community input and engagement.*



This is a **FREE COMMUNITY EVENT**.  
Your registration will help us with catering.  
To register, scan the QR code or head to  
[vbcc.org.au/communityenergy](http://vbcc.org.au/communityenergy)

**VENUS BAY  
COMMUNITY CENTRE**

27 Canterbury Rd Venus Bay



# Community Energy Project Venus Bay

No doubt many are aware the Venus Bay Community Centre have been successful in an application to the Federal Government for funding for a community energy project – **Community Resilience and Reliable Energy Feasibility Study in Venus Bay**.

Since the announcement of funding, the project team has been working to get all the official things sorted for the project – now we are about to begin the work to determine what Community Energy resilience may look like in Venus Bay...AND WE NEED YOUR HELP.

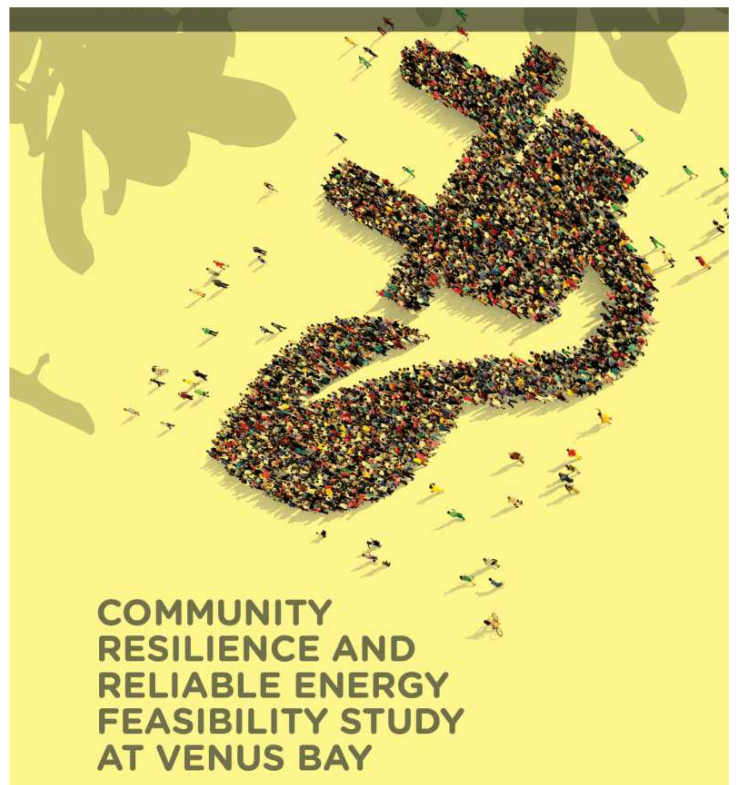
This project will be undertaken over the next 12-15 months – a critical part of the project is engaging with all sectors of our community in the journey towards shared understanding and ultimately, a community action plan along with a fully costed business case to progress the project towards implementation based on known and emerging issues for Venus Bay. We know we have aging infrastructure; we are the end of the line with one road in and out, high fire danger and without power (which happens more frequently) we have no water, cooking, heating or communications. The Venus Bay community have faced these issues for many years, however we now have a chance to really look at what we can do as a whole community to address energy resilience – that means working with industry stakeholders, defining what resilience actually means to individuals, business and the whole fabric of community that holds us together, especially in times of need.

The Project in a nutshell:

*A community-centred design approach will engage the community in identifying key elements of resilience from the perspectives of residents, business owners, holiday makers and critical organisations, e.g., State Emergency Services. The resilience definition will then guide the*

*assessment of actions to improve community resilience, including a strong focus on reliable energy options. The project partners will work with stakeholders to assess social, economic and environmental benefits of different options and the delivery pathways for a final action plan. The study comprises four main phases:*

1. Explore and define community and energy resilience
2. Co-design options for reliable energy supply
3. Develop a business case and delivery pathway
4. Co-create a community-led action plan



**THIS PROJECT DEPENDS ON COMMUNITY INPUT AND ENGAGEMENT –**

*we'd love you to join us for the Launch & Info Session and at any & all stages of the project.*

## **COMMUNITY ADVISORY GROUP – CALLING FOR EXPRESSIONS OF INTEREST**

A critical part of the project involves forming an advisory group with members across a range of disciplines and representation from Venus Bay – organisations, experts and community members across a wide spread of interest that can capture and represent a range of community perspectives. The Advisory group will meet every 2 months, and work alongside the project team to test ideas, provide input/perspective and help to promote understanding and engagement from the broader community.

If you are interested in joining the advisory group, please refer to the [Terms of Reference here](#) and send through an email to [alyson@vbcc.org.au](mailto:alyson@vbcc.org.au) for more information.

FREE COMMUNITY WORKSHOP

# COMMUNITY FIRST AID

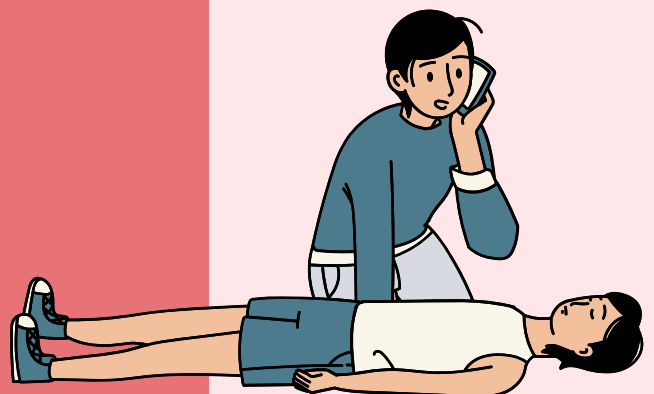


This workshop is designed to practice basic first aid skills like CPR - provided for free to community members by volunteer CERT members and Ambulance Victoria trainers

REGISTRATION ESSENTIAL:

[info@vbcc.org.au](mailto:info@vbcc.org.au)

**WEDNESDAY 20 JULY**  
**7PM TO 9.30PM**



VENUS BAY COMMUNITY CENTRE, 27 CANTERBURY RD, VENUS BAY





Bald Hills Wind Farm Community Grants for 2022 announced.

At a presentation evening at the Riverview Hotel in Tarwin Lower recently, members of the Community Fund committee, along with Bald Hills Wind Farm representatives joined community members to award the grants for 2022.

Each year since 2015, \$25,000 funding is available to support projects, groups and organisations within the catchment area of Walkerville, Tarwin Lower and Venus Bay. In 2022, the committee invited applications in 2 different categories – a District Grant of \$15,000 for projects with multiple benefits and partnerships across the 3 townships, and the remainder of the fund allocated to small grants of up to \$2,000.

The **2022 District grant** was awarded toward an **Environmental and Educational Signage in Venus Bay, Tarwin Lower and Walkerville** – auspiced by Venus Bay Community Centre and in partnership with Red Mullet Creative, CFA, South Gippsland Shire and community members.

The project seeks to create educational and engaging content and graphic signage for the 3 townships to promote greater understanding of the local environment and conditions, particularly relating to fire danger. This project does not seek to replace the education function of CFA nor any other emergency service organisation. It does seek to complement this by providing engaging and important community information in high pedestrian traffic areas of each town that will encourage people to think about where they are, and make informed decisions about the local conditions they may find themselves in.

Small grants of \$2,000 were awarded to:

- **Tarwin District Auto Club** for promotion of their upcoming AUTO FESTIVAL in October – an event that engages and benefits the whole community- bringing people from far & wide to the district for a day of fun.
- **CERT** – Community Emergency Response Team - to install an outdoor public AED in Venus Bay's second estate; this critical lifesaving equipment will be available 24/7.
- **Tarwin Lower Mechanics Institute Hall** to replace their public AED – once again providing critical life saving equipment in an accessible location for the community
- **Grants Only Group – GOG**, to upgrade their computer equipment and software to assist this volunteer group to apply for grants to service the community
- **Venus Bay Community Centre** to purchase a back up generator to ensure power is available when the grid goes down and supplement the battery system recently installed for long power outages.

The Bald Hills Wind Farm community fund will open again for the 2023 grants in November 2022 – with applications received by end of April. Once again, there will be a District Grant of \$15k along with smaller grants of up to \$2k. Over the previous 7 years, the fund has distributed nearly \$200,000 in community projects. The fund continues until 2040 with a total of \$625k available to support community projects in the district.

# VENUS BAY COMMUNITY CENTRE

## School holiday program

**Sat - Jun 25th** - Nature cushions,  
gumleaf mandalas and Upcycled  
Garden Project - Glass Mushroom Art

**Mon - Jun 27th** - Teapot creations,  
pinwheels and felt friends and  
Upcycled Garden Project - Mosaic  
tiles

**Wed- Jun 29th** - Jumbo board games  
and Rip it up Wall Hangings -  
Upcycled Garden project - Rockin'  
Snails

**Thurs- Jun 30th** - Make it snappy  
photo art and frames and Tie-Dye T -  
shirts - Upcycled garden project-  
Abstract Art Creations

**Sat - Jul 2nd** - Bits and pieces buddie  
and Miniature houses- Upcycled  
garden project - Nothing But Net

**All activities run from**  
**10am - 12.00pm**

Cost: \$8 per child



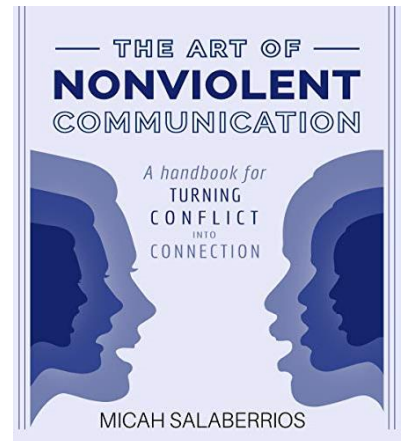
# Calling women

## of all ages and stages

Let's get together to grow, learn and change

This book gives tools and strategies to help you:

- Communicate with more authenticity, clarity and empathy while in the midst of conflict
- Learn to speak with 100% authenticity without judging, blaming or condemning anyone.
- Turn every conflict into a deeper, more profound connection.



Commencing Thursday 14<sup>th</sup> July - meeting fortnightly @  
10.30am - Tarwin Lower Church tea room  
Further details from Marlene (0419 345 128)

### Tarwin Lower Union Church

#### News



#### Regular services:

Saturday 5:30 p.m.

Catholic and Mass 6.30 p.m. (on the Saturday before 2<sup>nd</sup> Sunday of the month)

Sunday 10.30 a.m.

Anglican/Uniting

*Our mission is to be a welcoming, sharing Christian community*

#### Coming up:

- \* Women's discussion group (commencing Thursday 14<sup>th</sup> July)
- \* Café church, Sunday 31<sup>st</sup> July



## Tarwin Lower Film Society launches new season on July 15 with 'FREE COME AND TRY NIGHT' for French film "La Famille Belier"

The Tarwin Lower Film Society are launching their second season for the 22/23 period. It promises to be great viewing, with a carefully selected variety of award winning international, Australian and NZ films covering a number of diverse themes and genres, some challenging, some fun!

The Film Society members meet monthly to view a film in the Tarwin Lower Hall, they are shown on the third Friday each month at 7.30pm, doors open at 6.45pm. BYO nibbles and drinks.

"The Tarwin Lower Film Society is a member of the Federation of Victorian Film Societies and is bound by film screening rights which mean we need people to become members to be able watch films with us. Membership is not expensive at \$60 for the year or \$25 for three months. To help encourage new members for our new season we are inviting anyone interested to a "free come and try night" on 15 July, where they can enjoy our film as guests of the Committee to help decide if they would like to join our Film Society" according to Michelle Roberts, Treasurer, Tarwin Lower Film Society.

On Friday 15 July the French film "La Famille Belier" will screen, "It's a 2014 French-Belgian coming of age comedy-drama directed by Erick Lartigau. It looks like it should be great fun and we are hoping lots of Members and potential new members will come along and join us for this fun night." A list of the season's films can be found at [www.tarwinlowerhall.com](http://www.tarwinlowerhall.com). You can also use the tarwinlowerhall website to become a member for the new season.

You can also use the direct link to the TryBooking website (below), to buy your membership. <https://www.trybooking.com/eventlist/eventListingURL?aid=135234>

All enquiries to [TLfilmsociety@gmail.com](mailto:TLfilmsociety@gmail.com) or [www.tarwinlowerhall.com](http://www.tarwinlowerhall.com)

See trailer below for a sneak peek at "La Famille Belier"

<https://www.youtube.com/watch?v=S5ta3eA83Fo>

Anne Cox, Secretary Tarwin Lower Film Society

0432 494 531

All enquiries to [TLfilmsociety@gmail.com](mailto:TLfilmsociety@gmail.com) or [www.tarwinlowerhall.com](http://www.tarwinlowerhall.com)



## Whales on our coast (There she blows!) And where they blow!

*Contribution from David Farrar*

Of all the experiences you can have in the natural world. Seeing a whale out to sea, has to be up there with them, as one of the best experiences you can have with wildlife. For me it's on a similar scale, to being in the wild and hearing a large owl calling at night.

Or for me, "I am still waiting to travel to the northern hemisphere one day to see bears and hear wolves howling in the wild."

It's such an awe-inspiring moment, when you spot a whale and see the tell-tale signal of the whale blowing sea spray up into the air. It's just breathing really, through its nose, which happens to be on its back. All that evolution for one of the largest mammals in the world. Then while you watch, you observe its back and sometimes the mighty tail and if you're really lucky a whale will breach its whole body out of the sea and splash a huge wall of white water, seen many kilometres away. This is so easy to see with your eyes without the aid of binoculars or a spotting scope.

For the local community all living so close by to sea level, we have this opportunity to see whales daily, from May through to December. At this time it's mainly the Humpback Whale that's travelling from Antarctic waters up to warmer climates on the east coast and into the Pacific Ocean and a population of Humpback whale also travel north and head west and up the west coast into the Indian Ocean. The Humpback Whale can reach between 13-18 meters long and weigh up to 45 tonnes. They can be identified offshore by very long normally white flippers with larger darker body above and white underneath. They have a small dorsal fin which is visible when they move forward diving and blowing as they go.

Many of us will not remember the last phase of Humpback whaling in Australia, 1949 to 1963, was from shore stations on the west and east coast. Populations were depleted to only 1000 individuals in 1963. Now fully protected in Australian waters under federal and state provisions and regulations. The Humpback Whale populations is estimated to be more than 30,000 now in the southern oceans.

The other whale we see regularly is the Southern Right Whale, which measures between 14 – 18 meters long and can weigh between 40 – 80 tonnes. These large whales have no dorsal fin on their back and have a large mouth. The Southern Right Whale has also suffered from past whaling operations and in 1970 the population was estimated to be considered as rare. Not much information was known of the Southern Right Whale population estimations were less than 500





whales. It's estimated that maybe the current population is now approximately 4,000 Southern Right Whales now inhabiting the Southern Ocean.

They were called the Right whale, because back in the whale hunting days they were the right whales to hunt, due to the fact that they come inshore into shallow water and when harpooned and killed they floated and produced a lot of oil.

Southern Right whales arrive from around late May through to early November to calve in the shallow inshore areas. They can be found along the entire southern coast of Australia. The Southern Right Whales in past years have entered Waratah Bay and keep close inshore and rest next to the reefs just off the beach. The Cows with calves can stay for a week or more and this is why they are my favourite whale species to watch.

Both the Humpback and Southern Right Whale feed by filtering small pelagic crustaceans in the ocean surface area. They will also eat schooling fish species in large numbers all at once with each gigantic mouthful.

In Australasian seas there are many more whales and I will also mention dolphins now because you will see them as well if you are observant. In local coastal situations we see the Common Dolphin about 2.4 meters long and the Bottlenose Dolphin much larger at 3.1 meters long and there are also occasionally seen Killer Whale which can be up to 9 meters in length.

World-wide there are 80-odd species of whales and dolphins. There are 30 Whale species and 14 Dolphin species you could possibly see around the Australian coast. So we really only get to see a few species locally.

Where to see Whales and Dolphins locally.

Any headland is good, but the Venus Bay beaches from 1 to 5 are good. Beach 5 can be the best at certain times because of views towards Cape Paterson. One of the best spots where I go is the Cape Liptrap Lighthouse reserve. Your high up and you can see whales blow for such a long distance. Look for the white bed-sheets being thrown up! That's what it looks like. In rough seas it's easier to spot them when they surface, because I think they have to blow harder and the wind expands the blow. So it's then easy to observe signs of the blow.

Waratah Bay and around the Prom is good. Phillip Island can be great and really think about taking a boat cruise, which is always wonderful during the whale visiting season.

It's a good idea to take binoculars with you and a spotting telescope if you have one? Dress warm and enjoy the moments. Don't forget a camera!

I have been lucky to see many whales, dolphins and seals around coastal Victoria over the years and I always have the



same feeling of exhilaration each time I see a whale. There is something very special about seeing one of the largest animals on earth in the sea and on our local coastline.

*Reference books used: A Field Guide to the Mammals of Australia P. Menkhorst and F. Knight. Mammals of Victoria P. Menkhorst.*



## Women Fishing

Since the successful joint venture between the Community Centre and the Venus Bay Angling Club to establish a fishing workshop for women we have moved on to holding fishing



meetups to practice our skills. The weather has been wild and the fish have been well fed the last few months. There has been enough nibbles and interest to keep some of us returning though. For the most recent catch up we met inside the warmth of the Angling Club for some refresher training on 'rigs' and in particular the paternoster style. Kevin also gave one to one tuition on looking after the reel after a fishing trip a reminder on how to tension or un-tension the reel for storage. A small group proceeded down to the jetty to wet the line and were successful in actually catching a fish. (Salmon)



NEXT GATHERING FOR WOMEN  
FISHER PERSONS

# SURF FISHING

Rods and tuition  
supplied by the  
Venus Bay  
Angling Club

Thursday 28th July 1.00pm  
@Venus Bay Community Centre  
for a lesson on hooks, bait, sinkers etc

Friday 29th July 11.30am  
@The Beach  
meeting point will be discussed on Thursday



The Venus Bay Angling Club welcomes new members to the club, young and old! Membership is \$30.00 per family, per year and this entitles you to free entry to the fishing competitions which are held monthly, a free sausage sizzle once a month and the company of a great supportive and knowledgeable group.

VENUS BAY ANGLING CLUB will hold its' next Competition weekend 15<sup>th</sup>, 16<sup>th</sup> and 17<sup>th</sup> of July. There will be a weigh in each day at the club between 4-6pm Friday, 4-8pm Saturday, 4-6pm. Sunday and 2.30 - 3.00 p.m.

Our BBQ will be held on Saturday night, meat provided, and members and visitors are asked to bring along a hot dish/salad/dessert to share. For non members there is a \$5.00 entry fee for the competition which covers you for the BBQ Saturday night as well. It's going to be a chilly weekend but I believe the surf fishing is good at the moment so why not try your luck! We will have our raffle on Saturday night (with some great prizes) as well as the members draw.

More details can be found on the Angling Clubs facebook page: Venus Bay Fishing & Reports





# Silver Banksia

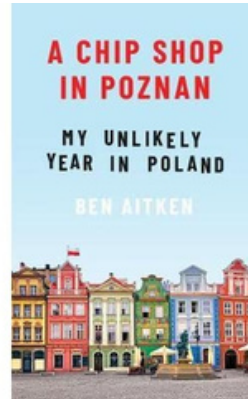
## Plant group

### Mondays

### 10.00 - 12.00

---

Book Club  
2nd Tuesday  
of the Month  
5.00 - 6.30



Current  
book

FREE Community  
Lunch  
Wednesdays  
12.00



A stitchin time  
social sewing  
group

3rd Wednesday  
of the month  
5.30 - 7.00

Nibbles and chat  
BYO project



## Sewing

## Wednesday

## mornings

BYO Project or help with  
upcycling projects

Play group  
Thursdays  
10.30 - 12.00



Venus Bay & District Community  
Emergency Response Team Inc.  
PO Box 458 Tarwin Lower Vic 3956  
Inc. A0050219U ABN: 47 386 677 037



In November 2021 Russell Broadbent asked for Expression Of Interest (EOI) Stronger Communities Programme round 7. The project title **“Power for LIFE”** was for us to apply for and AED Defibrillator and petrol generators totalling \$7542. In December 2021 Russell nominated us to the Department of Industry, Science, Energy and Resources (**DISER**). In March 2022 we received a successful letter from Russell that we’d received full funding in May 2022. All this process was successfully organized and facilitated by our local Grants Only Group Inc (GOG).

With these funds we purchased the Zoll AED 3 fully automatic defibrillator with secure cabinet, accessories of spare pads and battery, plus 1 Inverter petrol Generator. This equipment will be permanently stationed @ Walkerville Satellite Station (CFA) 20 Panoramic Drive, Walkerville, within ready access from Prom Views Estate, Walkerville.

The other Inverter petrol generators will be housed 1 in Tarwin Lower and 2 in Venus Bay vicinity. Residents will be able to contact CERT Committee members directly for the use of these Inverter Generators and accessories. These will be used by local residents to connect their home medical equipment, and also have access to charging mobile phones, when power outages occur.

#### **Contact for bookings –**

Secretary - Wendy Don – 0409 811 157 or email: [vbdcert@gmail.com](mailto:vbdcert@gmail.com)

Volunteer Responder - Tom Ohia – 0407 141 241

Team Leader – Michelle Ford – 0487 120 041

#### **Zoll 3 AED Defibrillator and cabinet**



#### **Inverter Generator**







Tarwin Lower & District Community Health Centre -  
19 Walkerville Road

**You're cordially invited to the**

**WINTER EXHIBITION**  
**PAINTINGS BY LOCAL ARTISTS**



Date: Saturday 24th July 2022

*2pm to 6pm*

*Finger food and beverages are supplied*

Reservation Bookings: **Tarwin Health Centre - 03 5667 - 5680** if no answer leave your phone number and we'll get back to you.

Fundraiser for Health Centre - Entry Donation Fee: **\$5 per person**

*Live music by Julia Hawkins and Phil Bowden Duet*

***Attention Artists*** To be part of the Exhibition call the Tarwin Lower Health Centre and leave your details.

**ANNUAL GENERAL MEETING**

**Monday 22nd August 2022 at 11.30am**

We are looking for **Volunteers** and **Committee Members** who are interested in maintaining our existing services and establishing new practitioners. Our service assists the local community in not having to travel further than Tarwin Lower to see Health Practitioners, including a Doctor, Nurse Practitioner, Psychologist, Podiatrist, Naturopath, Massage Therapist and more to come.

We also provide an activities room for hire – currently utilised regularly by Bridge, Red Cross, Yoga and Friendship Group. It is also available for party hire as it has a full kitchen and covered outdoor area

Volunteers assist with reception from 10am – 2pm Monday – Thursday and provide general assistance as required. Committee Members meet once per month and ensure the correct management of the Centre. Nominations must be in before the AGM – please contact the Centre if you are interested.

Our current President is retiring after a long period of service and we are looking for a replacement. Medical background is not necessary or essential.

It is an exciting time for the Centre with rapid permanent population growth in the local area.

Heather Fraser, Secretary, 0488 006 270, [heatherffraser@outlook.com](mailto:heatherffraser@outlook.com)

**SOUTH GIPPSLAND SHIRE COUNCIL UPDATE:** At the June Council meeting, key plans for South Gippsland were adopted. These documents will provide direction to Council and help to shape South Gippsland in line with the expectations of our community. Namely, these are:

- *Community Vision 2040*
- *Council Plan 2022 - 2026*
- *Long-Term Financial Plan 2022/23 to 2031/32*
- *Rating and Revenue Plan 2022 - 2026*
- *Budget 2022/23 to 2025/26*
- *Asset Plan 2022/23 - 2031/32*

Previously, these documents would have been created and engaged upon separately. However due to the new *Local Government Act 2020*, there is an expectation that these plans are built alongside each other so they work together once endorsed. To view the adopted plans and a summary of the engagement process, [click here](#).

Council also adopted its first Advocacy Strategy and a new Advocacy Priority Project List.

This strategy sets out how Council will advocate moving forward and the roles and responsibilities of the Mayor, Chief Executive Officer, Councillors and staff as well as the important role the community plays. The strategy identifies that advocacy is most successful when Council engage with, listen to and work in partnership with the community.

Advocacy includes things like lobbying the State or Federal Government for funding, policy change or legislation reform. It can involve letters to and meetings with Ministers and Members of Parliament, letters of support, media campaigns and much more.

As well as the adopted strategy, Council identified what the top advocacy projects will be moving forward. The priority list was developed with community feedback, State and Federal policy, evidence and data, ambition and achievability in mind and includes:

- Road improvements and an increase in road funding;
- Connectivity improvements including upgraded NBN and a decrease in mobile blackspots;
- Supporting our emergency preparedness;
- Funding for early years infrastructure;
- State Government support to upgrade the Leongatha Recreation Reserve Grand Stand;
- Improved health services; and
- Coastal protection such as erosion mitigation.

To read the strategy in full, please visit [www.southgippsland.vic.gov.au/strategies](http://www.southgippsland.vic.gov.au/strategies)



**NEW BICYCLES  
AVAILABLE TO  
HIRE \$20 PER  
DAY**

**WE ALSO HAVE A  
TRIKE  
deposit & registration  
required**



**Trailers for public  
use within the local  
area only. These do  
not require  
booking. Please  
return when  
finished using.**

**Disc golf - discs  
available for hire from  
the Centre.  
Course is located in  
Tarwin Lower. See  
their facebook page  
for more details.  
Shark Disc Park Club.**





SUNDAY 30th October, 2022, 9.30am – 3.30pm

TARWIN LOWER RECREATIONAL RESERVE  
WALKERVILLE RD, TARWIN LOWER.

Cars, Motorcycles, Trucks, Army Tank, Stationary Engines,  
Animal Farm, Face Painting, Food Stalls, Market Stalls,  
FREE Children's Activities

A Family Fun Day

All Welcome

Show Entry: \$10.00 per exhibitor, includes one passenger.

General Entry: \$10.00 per adult, children under 18yrs free

General Enquiry: Graham Kennedy 0431 442 682

Stall Enquiry: Lisa Breen 0412 105 004

Email: TarwinDAMC@gmail.com



*South Gippsland  
Shire Council*

BALD  
HILLS  
WIND  
FARM





## ***Gippsland hosts first-ever New Energy Conference August 11-12, 2022 - changing the way we source energy***

An extensive\* network of national and international experts, government agencies, educators, business and community groups are proud to present Gippsland's first ever **New Energy Conference in Sale, Gippsland Thursday 11-12 August 2022**.



"As the east coast of Australia grapples with dramatic threats of power outages and rising power costs, it is timely to bring together these important stakeholders to discuss our energy future, right here in Sale", said CEO of Gippsland Climate Change Network (GCCN), Darren McCubbin.

The Gippsland New Energy Conference aims to connect like-minded individuals, industry, businesses and supply chains and all levels of government, to better understand the depth and diversity of renewable energy opportunities and by doing so encourage innovators, investors and future growth.

"We want to further the renewable energy conversation and focus on projects, jobs, training, and economic investments. New energy can be an economic disruptor to support sustainability, wealth and future prospects in the region," Darren McCubbin said.

\*The extensive conference partner network includes the Gippsland Climate Change Network, Latrobe Valley Authority, Department of Environment Land Water and Planning, Wellington Shire Council and Latrobe City Council, TAFE Gippsland, Federation University, South Gippsland Shire Council and Solar Victoria.

By nature of geographic location, Gippsland is a renewable energy hotspot thanks to its access to 42km of coastline with low water depth, wind and solar energy, geothermal renewable energy layer only 650 metres beneath the surface, hydrogen and access to existing transmission infrastructure all within close proximity to Melbourne.

It is an exciting time for Gippsland with a significant amount of \$33 billion worth of projects in the new energy pipeline. The developments will all contribute to reducing emissions which is part of Victoria's Climate Change Strategy - a roadmap to net-zero emissions for Victoria by 2050. Victoria's temperature has already increased 1.2C since 1910.

The conference will:

- Raise the profile of energy opportunities in Gippsland with the objective of increasing both private and public investment across the region.
- Showcase Gippsland's wealth of natural resources, infrastructure, and workforce.
- Raise community awareness of the incredible new energy potential Gippsland provides in new energy and highlight the diversity of projects underway.
- Advance partnerships between industry and education providers to capture the opportunities available in reskilling the Gippsland workforce to ensure we leverage social and economic benefits locally.

**Thursday 11th August 2022 (daytime) – full day Conference (The Wedge, Sale)**

**Thursday 11th August 2022 (evening) – Gala Dinner (The Stables, Sale)**

**Friday 12th August 2022 (morning) – half day Conference (Victoria Hall, Sale)**

To book tickets & more info: <https://gnec.com.au/>



# Top 5 tips for a wildlife friendly garden

In Australia, habitat destruction and climate change mean more and more animals are seeking refuge in urban areas. In fact, around 46% of Australia's nationally threatened animals can be found in our cities, towns and suburbs.

As our cities continue to grow, it is important to make sure we keep spaces and places for wildlife. One way to do this is by creating a wildlife friendly garden.

Protecting and nurturing our green spaces offers benefits not just for wildlife, but people too. They offer a place for us to rest and restore. They can help provide shade, reduce heat and filter our air.



**Here are our top five tips for how to make your own backyard a sanctuary for native plants and wildlife – and for you too.**

## 1. Plant Local

Find out what plants are native to your local area and bioregion. From temperate to tropical, and from alpine to inland, Australian ecosystems are incredibly diverse, so make sure to plant local species. These will be the plants that have adapted to your region's climate and, with the right conditions (e.g. soil, sunlight), will be most likely to thrive. They will flower and fruit at reliable times for local wildlife. In fact, choosing a variety of local natives means you can help feed birds, insects, frogs and mammals all year round.

For more information on the plants indigenous to your local area, contact your local **Native Plant Society** or council. Local councils often give away native plants and can help you find a local indigenous nursery.

## 2. Diversity is key

Healthy habitats thrive on a diverse range of plant types. An easy way to ensure diversity in your garden is to think in layers – a bit like what you'd find in a forest.

- Ground layers – things like grasses and groundcovers, logs, mulch and rocks, which provide habitat for smaller animals like birds, lizards and frogs.
- Understory layers – small shrubs
- Mid-story layers – small trees and large shrubs
- Canopy trees – these will provide food and shelter for larger animals like possums, gliders, goannas, birds and bats – maybe even koalas, depending on where you live!





### 3. Offer water to wildlife

Just like us, animals need a reliable source of water, especially during the hotter months.

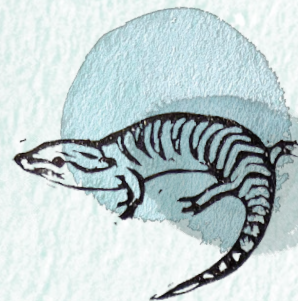
Offering a diverse range of water sources can help attract and support different animals.

- For example, a shallow dish of water at ground level can help small animals like lizards and echidnas to find a drink. For small birds, placing a bird bath at least a metre above ground and under a tree can protect them from predators while they are drinking.
- You can add rocks and sticks to the water bowl to support small critters and insects that cannot swim. It's important to make sure the water is cleaned regularly.

For more information on how to build a bird bath, [check out this factsheet](#) from Gardening Australia.



AUSTRALIAN  
CONSERVATION  
FOUNDATION



### 4. Lizard lounges, frog bogs

There are lots of unique ways to provide shelter for smaller animals like lizards, frogs and bees.

- First, embrace the mess. Leaf litter not only provides nutrients for your garden, but offers habitat for skinks and food for fungi. In turn, it feeds a large number of insects and the animals that eat them.

Second, get creative and build a **frog bog**, **bee hotel** or **lizard lounge** - or something else!

Backyard buddies has a **range of DIY projects** to help you attract wildlife to your garden.

### 5. Protect from pets and pests

Domestic cats and dogs are a major threat to our native wildlife. To keep your garden wildlife-friendly, it is best to keep dogs in a separate space, and cats indoors or in an enclosed outdoor area. Keeping all furry friends indoors at night is also recommended.

Pests like mice and rats can also be bad news for you and your backyard visitors. Make sure not to lure them in by leaving rubbish or food out, and avoid using poisonous pesticides that may harm local wildlife.

Likewise, when it comes to protecting your plants, make sure to avoid using herbicides. Chemicals from herbicides can enter stormwater systems, ultimately polluting our waterways and harming plants and animals beyond our own backyards.

Tips for controlling pests without the use of chemicals include:

- Attracting predatory animals - from birds and lizards, to ladybirds and dragonflies - to your garden.
- Removing pests by hand or spraying them with water.
- Deterring snails with ground-up eggshells around plants
- Try **home remedies** - here are some from Gardening Australia



Our friends at **WIRES** have some great advice on **how to keep pests at bay**, without the use of harmful pesticides or herbicides.





# Do you have a few hours to spare?

We are always looking for volunteers to help out at the community centre...do you have any particular skills you can contribute? Or perhaps you have a bit of time to spend helping with filing in the office or sorting donations for the Recycling enterprise?

Every bit counts and every bit is appreciated. We could not function without our fabulous team of volunteers.

So why not come and join in!

Situated at 27 Canterbury Road, Venus Bay.

Phone: 5663 7499, Send mail to Post Office Box 786, Venus Bay 3956

Email: [info@vbcc.org.au](mailto:info@vbcc.org.au) Website: [www.vbcc.org.au](http://www.vbcc.org.au)

Opening hours reflect the season - please check our website or Facebook for details

or call Alyson 0416 242 331

Venus Bay Community Centre is supported by:

Department of Health & Human Services (Victoria) and the Commonwealth Government, South Gippsland Shire Council.

Our website is [www.vbcc.org.au](http://www.vbcc.org.au)

Find current and back issues of Matter Of Fact on our website. Please contact us if you wish to be on our email distribution list.



**VENUS BAY**  
COMMUNITY CENTRE