

April 2024 Vol 4 Issue 15

MATTER OF FACT

Providing information for Venus Bay, Tarwin Lower
and Walkerville district



A free community newsletter published by

VENUS BAY
COMMUNITY CENTRE

We acknowledge the Traditional Owners of Country throughout Australia and recognise their continuing connection to land, waters and culture.

We pay our respects to their Elders past, present and emerging.



Sunny – Finally up and Running!

Our community e-bus has finally hit the streets.

We developed a trial schedule after extensive community consultation that includes a weekly Leongatha service on a Friday as well as connections to V/Line services on a Friday afternoon, Sunday afternoon and Monday morning fortnightly. You can also travel to Wonthaggi fortnightly on a Monday and travel between Venus Bay (Estate 2) to Walkerville every Wednesday.

Bookings are essential so please go to <https://www.vbcc.org.au/e-bus> to

book or review the full schedule. If you need help with bookings call 0403 108 199.

Things to do using Sunny

You could meet a friend in Inverloch for a coffee on a Monday or you could go to Walkerville for a swim on Wednesday. On a Friday you could head to Leongatha for lunch and a movie and get the later service back.

Group Events

Our group events have been well received with trips to the Mirboo North Italian Festival, the Tarwin Market, and an art studio trip just this week. Upcoming trips include a trip to Archies Creeks to see the Stetson Family band, a Wombat Walkers outing to Walkerville and a Prom trip later this month (see more info in Matter of Fact). On the horizon are a movie days, and a Berninnet adventure and we're always looking for fresh ideas so please send ideas to info@vbcc.org.au.

We provide regular updates about Sunny on both the Tarwin Lower/ Venus Bay and Walkerville community Facebook pages and we have information and schedules at noticeboards around town.

What's Next

If you're a driver or passenger you should receive a message from our partners at La Trobe University to participate in the project by providing feedback about your experience. We encourage everyone to have their say. That way we can make improvements to the service that will better serve our community.

Official launch & ribbon cutting was held in Leongatha in March to coincide with the Community Energy Congress and Sunny went off to Bass Coast to take part in the Totally Renewable Tenby Point EV expo.



WINGING IT TOP TO TAIL
(MAKING TAILS AND WINGS)
4TH APRIL



CRAFT ACTIVITIES WITH JORJA

\$10 PER CHILD

VENUS BAY COMMUNITY CENTRE

10.00 - 12.00



APRIL 3RD -
RECYCLED
PUPPETS



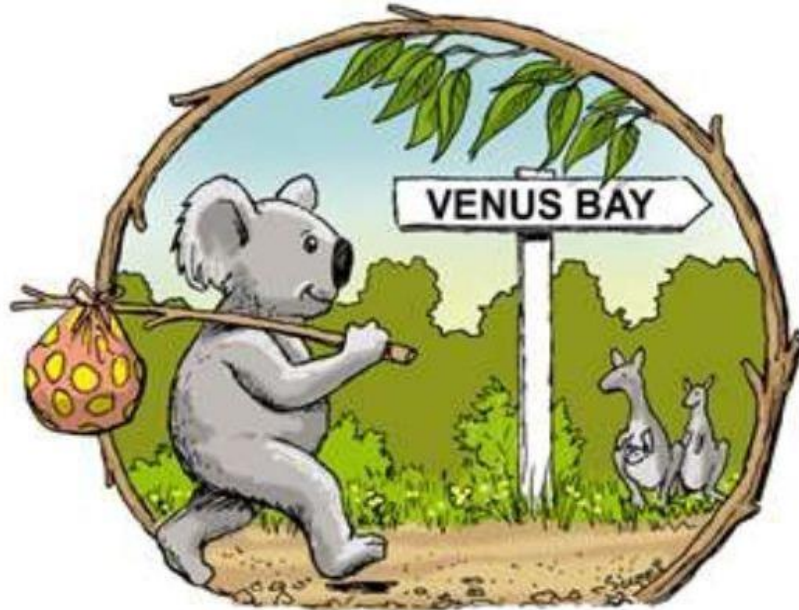
APRIL 6- UNDER THE SEA CRAFT
MAKING ROCK POOLS AND SAND
PAINTINGS NATURE DRAWINGS
AND CLAY CREATIONS



KOALA FOOD - MANNA GUMS

EASTER SATURDAY 10 - 12

DONATIONS WELCOMED



ALSO NATIVE & INDIGENOUS PLANTS FOR SALE



**COMMUNITY
ENERGY
E-BUS**

Venus Bay



Powered by community... for community.

**SUNNY is heading to
Wilsons Promontory.**

\$10

**9.00 am pick up from the
Community Centre.**

BYO Lunch.

Book via the QR code



COMMUNITY RECYCLING ENTERPRISE: EASTER HOURS

EASTER MONDAY

10:00 - 2:00

SATURDAY

10:00 - 2:00



HAVE A SAFE
EASTER

VENUS BAY
COMMUNITY CENTRE



Part of [Latrobe Regional Health](#)

Anna Anthony (Kongwak Market occasional stall holder and used to work at South Gipps Shire) I have a Gippsland Region Public Health Unit hat on as a Health Promotion Officer. I just wanted to touch base and reach out to our local community houses to gather feedback and understanding from our South Gippsland Community and key stakeholders.

The Gippsland Region Public Health Unit, are dedicated to maintaining strong relationships with our community and stakeholders. Currently, we are conducting a project to gather feedback and insights on community and stakeholder engagement.

Your perspectives as individuals who live, work, and invest time in the Gippsland region are incredibly valuable to us. Your input will significantly influence our decision-making process as we strive to make choices that benefit everyone involved.

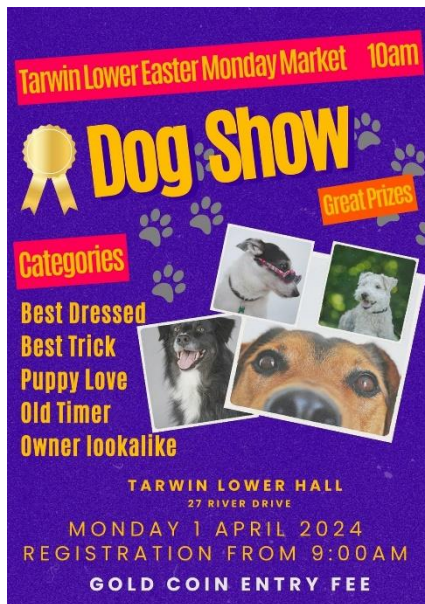
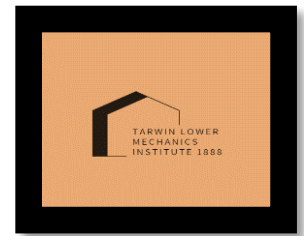
We warmly invite you to participate in our survey and kindly request your assistance in sharing it within your community or networks. Your advocacy will help us reach a broader audience and gather a more diverse perspective. Can you please also share this in your next 'Matter of Fact' newsletter and share with the local community? Also, if you have any community groups are interested or upcoming events we come and have a chat more about our role in building collective action towards health and wellbeing in our community? I have attached our logo which may help community and your partners know who we are? Thank you in advance.

Community Participation survey link: <https://forms.office.com/r/mKjaC23Cc8>

We greatly appreciate your time and contribution. If you have any questions or need further information, please don't hesitate to contact us by email on grphu.prevention@lrh.com.au or anna.anthony@lrh.com.au or phone 5173 5593.

Thank you for your ongoing support and collaboration and look forward to hearing from you soon.

Hi folks – welcome to the April edition of the Hall newsletter. Yes April!



The first cab off the rank is our next fab market happening on **Easter Monday the 1st of April**. You may have heard we are presenting our first ever **Dog Show** on the market grounds starting at 10am. Registration from 9am. Limited number of entrants - 6 per category. Gold coin donation to enter.

Proudly supported by Christine Grant from **Everydog Behaviour & Training** of Venus Bay – Woof!

Thanks to all those who attended the **Scott Cook** gig on Sunday March 17th. Scott and Pamela are both fine musicians as well as downright lovely people. A massive congratulations to the **Venus Bay Ukulele Pluckers** on their first ever public performance introduced by the hilarious Paul Hastings it was a classic afternoon.

The **Tarwin Lower Film Society** will screen the Macedonian film "*Honeyland*" on Friday 19 April at 7:30pm
Rated M Documentary

"The last female bee-hunter in Europe must save the bees and return the natural balance in Honeyland, when a family of nomadic beekeepers invade her land and threaten her livelihood. This documentary which is filmed in Macedonia is an exploration of an observational Indigenous visual narrative that deeply impacts our behaviour towards natural resources and the human condition."

Winner 2 Academy Awards & Sundance Film Festival – Best Documentary
Membership information www.tarwinlowerhall.com/filmsociety

ANZAC Day – Thursday 25 April 12:00pm

Community organisations will come together with residents and students from the Tarwin Lower Primary School for a service at the Tarwin Lower Centotaph commencing at 12:00pm. Those wishing to join the short march led by the Wonthaggi Marching Band should gather at the hall from 11:45am. Light refreshments will be served at the Hall after the service. All welcome.

Update - Art Cubes come to Tarwin Lower – 29 April

Expressions of Interest are now closed. The selection panel will work with artists to schedule and activate the Cubes and the Hall through the months of **May, June and July**. This is a very exciting time and we can't wait to share it with you all.

Our thanks to ongoing tenants Tracie B Mitchell (**Twirling Sheila Yoga**) & Christine Grant (**Everydog Behaviour Training**) who continue to bring the good vibes. Take care everyone!

Tarwin Lower Mechanics Institute Hall Committee of Management



Volunteers Opportunities with **Ambulance** Victoria



VENUS BAY and DISTRICT

CERT

The **TEAM in BLUE** is here for **YOU** when **YOU** need us.

PEOPLE NEED C.E.R.T.
C.E.R.T. NEEDS PEOPLE

To Joining us scan QR Code URL for further information or follow us on Facebook. <https://facebook.com/CERT-Community-Emergency-Rersponse-Team-Venus-Bay-Venus-Bay-440145853107221/>



Planned power outage for Venus Bay

10th April

Community Centre open
9.00 - 5.00
if you need access to power

Remember to fill your buckets



www.vbcc.org.au



Call for Volunteers.

The Tarwin Lower Community Health Centre needs volunteers to act as a receptionist. Hours are 10.00am to 2.00pm. Mutual Obligation recipients of Centrelink are eligible. Please contact the Secretary on phone 5667 5680, if the centre is closed, please leave a message and someone will get back to you or email tarwinlowerchc@gmail.com

Brian Henderson

Secretary

Tarwin Lower Community Health Centre

Tarwin Lower Union Church



Regular services:

Saturday 5.30 p.m.

Catholic

*Liturgy/Communion on the Saturday before the 1st,
2nd, 4th and 5th Sunday of the month*

Saturday 4 p.m.

Mass before the 3rd Sunday

Sunday 10.30 a.m.

Anglican/Uniting

Our mission is to be a welcoming, sharing Christian community

Coming up:

- * Women's discussion group: Thursday 11th April at 10.30 a.m. (Next meeting Thursday 2nd May)
- * KYB (Bible study): Friday 12th and 26th April at 1.30 p.m.

FUN RUN & WALK



Easter Saturday —

**30th March
2024**

Venus Bay Beach #1
**9:45am briefing - 10am
start**

DISTANCES

2.2km | 6.6km | 8.2km | 10km

PRICES

Family | \$35 | Adult | \$15 Child | \$10

Join us for a run or walk along the fabulous beaches of Venus Bay and help to raise funds for the Venus Bay Surf Life Saving Club.

**To book:
Scan QR code**

OR

**Go to
[www.trybooking.com/
CPDLY](http://www.trybooking.com/CPDLY)**





Community Fund Grant

The Bald Hills Wind Farm Community Fund was established in 2015 to provide ongoing financial support to local community clubs and organisations. The Community Fund is overseen by the Community Fund Committee, membership is made up of volunteers from the local community, and Bald Hills Wind Farm providing administrative support.

The Community Fund provides financial grant for projects of social, economic or environmental benefit to the Tarwin Lower, Venus Bay, Walkerville districts. This may include funding for local sporting groups, charities, community groups, education, culture, arts and other not-for-profit organisations or other community needs*.

Bald Hills Wind Farm will provide \$25,000 per year for each year that the wind farm is in operation to the Community Fund. Any funds not utilised will be carried over to the next year.

2024 Grant

This year, the Community Fund has **\$25,000** available for grants to community organisations. The Bald Hills Wind Farm Community Fund Committee has decided that for the 2024 financial year it will provide two categories of grants:

- **DISTRICT PROJECT:** one grant of up to \$15,000 will be awarded to an organisation undertaking a District Project. District Projects must demonstrate community partnerships/collaboration and overall benefit to the district/wider community.
- **SMALL PROJECT GRANTS:** Small Projects will be awarded up to the amount \$2,000 per project. Small Project grants are for the organisation to enable it to provide a benefit or service to the local community.

The applications for the projects should:

- demonstrate collaboration and increased community participation;
- show that the project is achievable within local mandates;
- demonstrate the need for the project and include supporting research; and
- take into consideration the approval necessary and the ownership/maintenance of any new asset.

Assessment and Notification

Applications will be assessed by a committee of community members and successful applicants will be advised in writing.

Funding

The funding for successful applications will be paid by Bald Hills Wind Farm and grants must be used within 12 months of their award.

Book your seat on Sunny.
Cost is \$20 to be paid when booking. No
refunds given after the 18th of April.
phone 5663 7499
Purchase exhibition entry separately.

TUESDAY 23RD APRIL
09 AM - 5 PM

ANNAMEIKE MEIN EXHIBITION

SUNNY THE E-BUS IS HEADING TO SALE

www.vbcc.org.au

Book your \$10 seat on Sunny
Workshop cost is \$60
phone: 5663 7499

TUESDAY 7TH MAY
8.30 AM - 5 PM

BYO lunch, all materials, tea
and coffee supplied.

ORGANIC FIBRE WRAP WORKSHOP

SUNNY THE E-BUS IS HEADING TO JAM JERRUP

www.vbcc.org.au

Mens social cooking

WATER COLOUR PAINTING

Writers group

COMING SOON TO THE COMMUNITY CENTRE

Register your interest. Dates & times to be confirmed.

email: info@vbcc.org.au or drop in

LAST WEDNESDAY OF EVERY MONTH

- ☑ Affadvits
- ☑ Statutory declarations
- ☑ Wills, general contracts

DOCUMENT WITNESSING

12.00 - 1.00

☎ 5663 7499

🌐 www.vbcc.org.au



MONDAY
10.00 - 12.00
SILVER BANKSIA PLANT GROUP



TUESDAY
5.00 - 6.30
BOOK CLUB 2ND TUESDAY OF THE MONTH



WEDNESDAY
FREE COMMUNITY LUNCH
WEDNESDAYS 12.00
(LAST LUNCH FOR 2023 - DEC 20TH)



THURSDAY
UKULELE
7.00 - 8.30
\$5.00

**VENUS BAY
COMMUNITY CENTRE**

phone 5663 7499
info@vbcc.org.au

Regular Activities



VENUS BAY ANGLING CLUB will hold the April Fishing Competition starts at 12 noon Friday 26th April and finishing at 3.00 pm sharp Sunday 28th April. There will be a weigh in each day at the club between 4-6pm Friday, 4-6 pm Saturday, and 2.30 -

3.00 p.m. Sunday when the winners will be announced. 1st Prize for financial members is a \$50.00 voucher from a local business. Our BBQ will be held on Saturday night, meat provided, and members and visitors are asked to bring along a hot dish/salad/dessert to share. For non members there is a \$5.00 entry fee for the competition which covers you for the BBQ Saturday night as well. We will have our raffle on Saturday night (with some great prizes) as well as the members draw. Come along and join in the fun.



A nice catch today by Anne-Marie, pinky 1.2 kg gutted. Well done!



ANNUAL EASTER EGG HUNT

Get ready for an egg-citing Easter egg hunt at Gerald's shed held by the Venus Bay Angling Club on Sunday at 10am! Kids aged 12 and below are invited to join in the fun.



Venus Bay, Tarwin Lower & District Men's Shed
190 Lees Road Venus Bay
A0057129V

The Men's Shed is hosting an open day Saturday 30th March from 9.30 a.m to 2.30 p.m.

There will be food and drink at minimum prices.

Come along and have a look at the Shed and browse our beautiful hand crafted wood goodies on display.

190 Lees Rd – next to CFA

Community Recycling Enterprise @ Venus Bay

Community Centre

Frequently asked questions

Why Don't you take donations after hours?

We operate largely on volunteer power, and as such we have limited resources to deal with donations. Donations dumped out of hours, create a strain on our volunteer resources. There are also other factors that make donating after hours a strain on the operation of the Community Centre. The weather, rodents, pests and of course theft of your kind donation. A large percentage of donations that are left after hours, are either not suitable or not in a saleable condition. They could also be items that we would not normally accept as donations. Which leads to a lot of after hours donations having to be disposed of. Considering our main goal is keeping items out of landfill, this is not ideal. Just imagine if you had to take a couple of hours every day to clean up your workplace before you even got started for the day?



What donations can you not take?



From time to time we cannot take certain items, due to a number of reasons.

- The size restriction of our location and storage, we simply do not have enough room.
- Overload of stock, we may already have an excessive amount of stock.
- Condition of the donation, if the item is unsafe, broken, missing pieces, stained, dirty or damaged we cannot accept it.
- The item must be in a saleable condition and safe for volunteers to handle.

What we can accept is constantly changing depending on stock levels, so it is always best to call the Community Centre and discuss what donations we can currently take.

Please call Kaz, Carol, or Alyson on 5663 7499.



MUSIC TRIVIA

TARWIN SHARKS BOWLS CLUB

SATURDAY NIGHT MAY 25, 2024

\$10-00 PER PERSON

9 ROUNDS WRITTEN TRIVIA
3 ROUNDS AUDIO TRIVIA
BUY ANSWERS
RAFFLES AND GAMES
LUCKY SEAT / NUMBERS

TABLES OF 8
SMALL GROUPS WELCOME
BEST THEMED TABLE
BEST DRESSED, or NOT!!
WILD CARD ROUNDS

BOOKINGS ESSENTIAL – LIMITED TABLES

CALL OR TEXT NOW

OLGA 0409511048

PAUL 0409164330

FULL BAR OPEN – NO BYO
Bring your own nibbles and snacks

MAJOR FUNDRAISING EVENT
TO PURCHASE NEW SCORE BOARDS

REGISTRATION & PRE DRINKS 6-30
INSTRUCTIONS AND QUERKS 7-00
SEATED & EYES DOWN 7-30



WEEKLY MORNING CLASSES CONTINUE

TUESDAY AND FRIDAY 9:30AM
TARWIN LOWER MECHANICS
HALL
AND

SUNDAY 9:30 AM
THE TREEHOUSE STUDIO
VENUS BAY

investment \$25 casual \$85 for four week blocks



Coming Up

MINI RETREAT



Learning to take time out from the hustle and bustle.

This extended session invests in breathing and movement practise which encourages the nervous system to settle. This retreat is designed to encourage relaxation and in order to reset. Using deep breathing and gentle movement, encouraging the nervous system to settle. Come away feeling relaxed and rested.



Investment \$90

To secure a place text 0421300407

TWIRLINGSHEILA PRODUCTIONS IS COMMITTED TO OFFERING ENRICHING EXPERIENCES FOR YOUR WELLBEING.
STAY IN TOUCH ON



Australia's
**Biggest
Morning
Tea**



**Cancer
Council**

You are invited to our **Australia's Biggest Morning Tea**. Let's get together and enjoy a cuppa so we can support those impacted by cancer.

Host: Tarwin District Auto & Machinery Club Inc

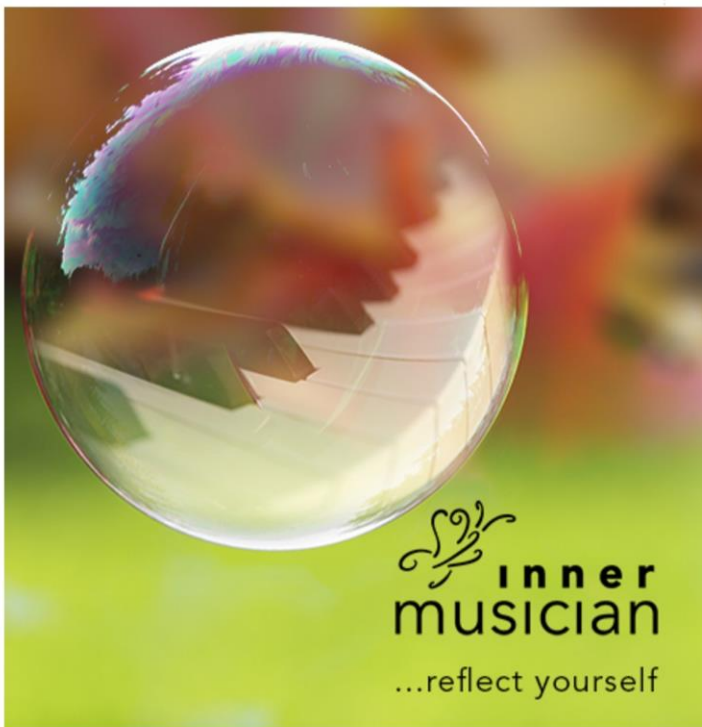
Where: Tarwin Lower Mechanics Institute Hall

Date: Sunday 5th May

Time: 10.00am – 12.00pm

Details: \$10.00

For further enquiries email – Tarwindamc@gmail.com



Erini C. Easton

ph 0409 048 031

erini.youaremusical@gmail.com

Would you or your child like to explore the piano in a fun way?

Erini will be running small, group workshops, of Play-a-Story, for pre-schoolers aged 4+ and Junior school students.
courses.innermusician.com

Workshops will also be available for middle-schoolers, teens and adults of Simply Music program - play songs from your first lessons, no music reading involved!
simplymusic.com/students

These taster sessions will be run at Venus Bay Community Centre.

Energy Assistance Program



Free one-on-one support with your energy bills.

Having trouble paying your energy bill?

We can help.

Phone **1800 161 215** to speak to one of our energy advocates.



Scan to get help through the Energy Assistance Program



Energy, Environment and Climate Action

LOCAL DISABILITY EXPO



TUESDAY
16TH APRIL
10AM - 2PM



LEONGATHA
MEMORIAL HALL

**Join us to see what
community groups
and services you
could be a part of.**

PROUDLY HOSTED BY:



MORE INFO: BCLNEWWAVE@GMAIL.COM





Do you have a few hours to spare?

We are always looking for volunteers to help out at the community centre...do you have any particular skills you can contribute? Or perhaps you have a bit of time to spend helping with filing in the office or sorting donations for the Recycling enterprise?

Every bit counts and every bit is appreciated. We could not function without our fabulous team of volunteers.

So why not come and join in!

Situated at 27 Canterbury Road, Venus Bay.

Phone: 5663 7499, Send mail to Post Office Box 786, Venus Bay 3956

Email: info@vbcc.org.au Website: www.vbcc.org.au

Opening hours reflect the season - please check our website or Facebook for details

or call Alyson 0416 242 331

Venus Bay Community Centre is supported by:
Department of Families, Fairness and Housing, the Commonwealth Government, & South Gippsland Shire Council.

Our website is www.vbcc.org.au

Find current and back issues of Matter Of Fact on our website. Please contact us if you wish to be on our email distribution list.

