

# MATTER OF FACT

a free community newsletter published by  
Venus Bay Community Centre

AUGUST 2022 Vol 8 Issue 13



Providing information for  
Venus Bay, Tarwin Lower  
and Walkerville district

**VENUS BAY**  
COMMUNITY CENTRE

We acknowledge the Traditional Owners of Country throughout Australia and recognise their continuing connection to land, waters and culture.

We pay our respects to their Elders past, present and emerging.





## COMMUNITY ENERGY PROJECT UPDATE

We're thrilled that our Community Resilience and Reliable Energy Feasibility Study for Venus Bay (Community Energy Project for short!) is now LAUNCHED!

For those unfamiliar with the project, Venus Bay has been selected as a place to investigate what **resilience** means for our residents, part-timers and holiday makers and for our whole community, and what **reliable** energy options might support our version of resilience. This investigation is helping us to **prepare** for the years ahead where we are likely to see more frequent and severe weather events (e.g., flood, fire and storms) that can cause power loss in the main grid. Venus Bay has known vulnerabilities like one road in and out, high fire danger, reliance on power for water, communications, heating and cooling. So, our community energy project is inviting everyone to join in and steer the research and development of reliable and affordable energy solutions that will reduce the vulnerabilities and increase our resilience.

### In a nutshell, the intent of our project is to:

- Define what resilience means for full-time and part-time residents, business owners, community organisations and holiday makers.
- Explore various energy options that could support our resilience
- Test which of these options might work in Venus Bay
- Assess what the best options might cost
- Put together a plan that outlines how we could fund and build the best energy options

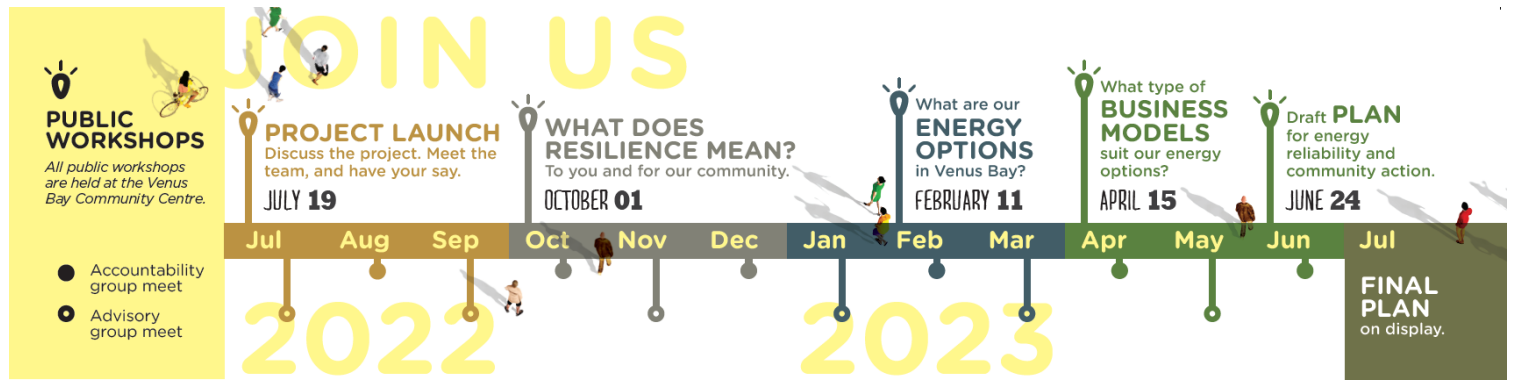
If you'd like to hear a short project summary – our project partner Heather Smith, from Changing Weather, has recorded this overview of the project [link here](#)

On Tuesday 19 July, we hosted a Community Launch of the project when we also explained the aims of the project, introduced the project team and advisory group, had a great conversation with many community members and shared some warmth and yummy food too! We were pleased so many were able to join us on a mid-week, mid-Winter evening! (*Note – all remaining workshops scheduled for weekends to allow for all members of our community*).

## WALK THROUGH ENERGY AUDITS

Heather Smith spent the day after the launch visiting businesses and community buildings to better understand their energy consumption and particular vulnerabilities to loss of power. Whenever she is granted permission, she downloads their energy data and provides a short energy report for each business. If you would like your business to benefit from an energy report and short discussion with Heather, please contact Alyson or Heather directly.

While we've looked at physical buildings in Venus Bay, we know many people **work from home** and are **trades people** working on site in the community. There are particular vulnerabilities that we seek to understand from these perspectives as well – for example the dependence on communications/electricity to conduct your home-based business, charging tools etc. for trades. We'd love to hear from you about what would assist with resilience and reliability either at one of the community workshops or through the online surveys.



Over the next year, there will be four community workshops to inform the research and analysis undertaken by the project team, which in turn, will be shared with everyone as we go, so we can create and refine our plan throughout the life of the project

1. Saturday October 1st

Define resilience and reliable energy supply with everyone identifying the services they need during power blackouts and exploring new ways to provide these. From internet reception to refrigeration.

2. Saturday February 11th

Learn about and test from individual and community perspectives the different technically possible energy options that address our definition of resilience

3. Saturday April 15<sup>th</sup>

Explore and develop different cost and funding options that would enable us to invest in and build the best energy options

4. Saturday June 24<sup>th</sup>

Draft and refine a community plan that will help us get the best energy options to happen.

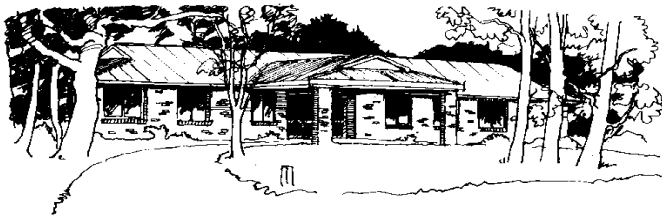
### YOUR INPUT IS IMPORTANT & VALUED

While the project might seem big and a bit confusing at first, input from our community members across all the spectrum of opinions and perspectives is important. You can contribute by attending the community workshops when you will have the opportunity to discuss the concepts with others and discuss what is important to you. There will also be surveys, information nights on related energy topics and other community conversations where you can learn more and have your say. More on these in Community Energy for Venus Bay – Bulletin #2

### HOW CAN I FIND OUT MORE?

More information, regular updates and the monthly bulletins can be found on the [website](#).

While it's not part of this project, we do hope to host some additional **COMMUNITY INFORMATION** sessions based on community input – for example solar and battery for the home – what do I need to know? Other sessions can be determined based on feedback from you, so please let us know what you would like to know more about with regards to renewable energy. Let us know your thoughts on any/all of the above – via [website form](#) or direct email to [alyson@vbcc.org.au](mailto:alyson@vbcc.org.au) or [heather@changingweather.com.au](mailto:heather@changingweather.com.au)



**Tarwin Lower & District  
Community Health Centre Inc.**

19 Walkerville Road,  
Tarwin Lower VIC 3956

Telephone 03 5667 5680

Fax 03 5667 5679

ABN: 54 549 578 717 Incorp: A0012733G

[www.tarwinhealth.com.au](http://www.tarwinhealth.com.au)  
[info@tarwinhealth.com.au](mailto:info@tarwinhealth.com.au)

**ANNUAL GENERAL MEETING  
Monday 22nd August 2022 at 11.30am**

We are looking for **Volunteers** and **Committee Members** who are interested in maintaining our existing services and establishing new practitioners. Our service assists the local community in not having to travel further than Tarwin Lower to see Health Practitioners, including a Doctor, Nurse Practitioner, Psychologist, Podiatrist, Naturopath, Massage Therapist and more to come. We also provide an activities room for hire – currently utilised regularly by Bridge, Red Cross, Yoga and Friendship Group. It is also available for event hire as it has a full kitchen and covered outdoor area.

We do NOT receive funding for running the centre so we rely on our volunteers. Volunteers can assist with reception from 10am – 2pm Monday – Thursday and provide general assistance as required. Garden volunteers help maintain the gardens and grounds. Committee Members meet once per month and ensure the correct management of the Centre. Nominations must be in before the AGM – please contact the Centre if you are interested.

Our current President is retiring after a long period of service and we are looking for a replacement. Medical background is not necessary. It is an exciting time for the Centre with rapid permanent population growth in the local area.

Heather Fraser  
Secretary  
0488 006 270  
[heatherffraser@outlook.com](mailto:heatherffraser@outlook.com)

## **Tarwin Lower Union Church**

### *News*



#### **Regular services:**

Saturday 5:30 p.m. Catholic  
and Mass 6.30 p.m. (on the Saturday before 2<sup>nd</sup>  
Sunday of the month)

Sunday 10.30 a.m. Anglican/Uniting

***Our mission is to be a welcoming, sharing Christian community***

#### ***Coming up:***

***\* Women's discussion group (meets on 11<sup>th</sup> and 25<sup>th</sup> August)***





# Silver Banksia

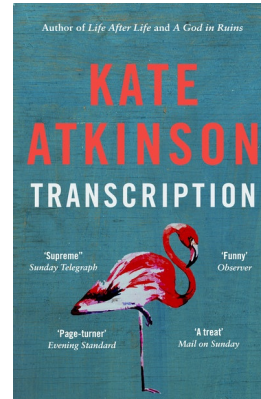
## Plant group

### Mondays

### 10.00 - 12.00

---

Book Club  
2nd Tuesday  
of the Month  
5.00 - 6.30



Current  
book

FREE Community  
Lunch  
Wednesdays  
12.00



A stitchin time  
social sewing  
group

3rd Wednesday  
of the month  
5.00 - 6.30

Nibbles and chat  
BYO project



Sewing  
mornings  
every  
wednesday

BYO Project or help  
with upcycling  
projects

Play group  
Thursdays  
10.30 - 12.00





## Women Fishing



### WOMEN SURF FISHING



Since the successful joint venture between the Community Centre and the Venus Bay Angling Club to establish a fishing workshop for women we have been holding regular catchups to practice our skills.

This month we learnt about Surf Fishing! The women had a great day at Beach One with the Angling Club supporting us with surf rods, waders, knowledge and, in some cases, the muscle to get those big lines out into the surf. I believe the tally for the outing was 2 crabs a reasonable sized salmon and quite a bit of weed.

The sun was shining the waves were big, and in places, the colour of chocolate milk. Apparently, the colour is caused by Diatoms which are actually a phytoplankton which have the ability to photosynthesise and convert dissolved carbon dioxide in the water into oxygen.

The Venus Bay Angling Club welcomes new members to the club, young and old! Membership is \$30.00 per family, per year and this entitles you to free entry to the fishing competitions which are held monthly, a free sausage sizzle once a month and the company of a great supportive and knowledgeable group.



VENUS BAY ANGLING CLUB will hold its' next Competition weekend 12<sup>th</sup>, 13<sup>th</sup> & 14<sup>th</sup> of August.

They usually hold a BBQ on the Saturday night, meat provided, and members and visitors are asked to bring along a hot dish/salad/dessert to share. For non members there is a \$5.00 entry fee for the competition which covers you for the BBQ Saturday night as well.

More details can be found on the Angling Clubs facebook page: Venus Bay Fishing & Reports.




**VENUS BAY  
COMMUNITY CENTRE**

# LEARN TO FISH

Two sessions  
September 9th @ Venus Bay Community Centre  
12.30 - 2.30

September 10th @ Angling Club & Fishermans Jetty  
11.30 - 1.30

All gear is supplied, you will need to purchase a fishing license.  
Cost is \$5.00 which covers you for the Venus Bay Angling Club competition and family bbq if you wish to attend.



ALL WELCOME!



## POWER SAVING BONUS

Venus Bay Community Centre is an official community outreach provider for the State Government's \$250 Power Saving Bonus. We are assisting community members to receive this one-off payment to help ease energy bill stress, and to help them seek out a better energy deal. As of 1 July 2022, this payment is available to all Victorian households. The Centre also receives a small fee for providing the service.

### What is the \$250 Power Saving Bonus?

The \$250 Power Saving Bonus is a one-off \$250 payment which provides direct support to Victorian households experiencing power bill stress during the coronavirus pandemic.

### Who is eligible for the Power Saving Bonus?

To be eligible, you must meet the following eligibility requirements:

- Be a Victorian residential energy consumer (i.e. have a residential electricity account)
- You must be the account holder

### When can households apply?

This program is running from 1 July 2022 until 30 June 2023.

### How many people per household can apply?

Only one payment is available to each household.

**I am a concession card holder who received the previous Power Saving Bonus before 1 July 2022.**

### Can I apply again?

Yes you can.

**How do I apply?** Applications are made online. We are here to help. Come into the Venus Bay Community Centre between 10.00 – 2.30 Monday, Wednesday or Thursday.

### What do I need for the application process?

When you come to us to submit your application, there are a few things you need to bring with you:

- a copy of a recent electricity bill
- your 'NMI' number (this is located on your bill and is typically a 10 or 11 digit number)

Be sure to keep a copy of your NMI and your application reference number as you may need this information for further communications about your application.]

### How will it be paid to me?

When you submit your application online, you will be able to choose between receiving your payment via EFT (electronic transfer into your bank account) or cheque.

### How long does it take to receive the Power Saving Bonus?

If you meet the eligibility and documentation requirements, you should receive your \$250 payment via Electronic Fund Transfer (EFT) within two to three weeks of submission. If you request payment via cheque, this should be received within four weeks.

Since 1 July 2022,  
**every** Victorian  
household is now  
eligible for the

**\$250  
POWER  
SAVING  
BONUS**

NEIGHBOURHOOD  
HOUSES  
VICTORIA

Good Shepherd  
Australia New Zealand

VICTORIA  
State  
Government

# Non-mains energy concession

Concession card holders who source non-mains energy for their heating, cooking and hot water can apply for a concession to help cover their yearly energy costs.

If you have one of the following you may be able to claim the Nons-mains energy concession.

Non-mains sources of energy:

- liquefied petroleum gas (LPG)
- firewood for domestic heating, cooking or hot water
- heating oil
- electricity accessed via an embedded network
- generator fuel.

You can apply if you are:

An account holder who holds one of the following eligible cards:

- Pensioner Concession Card
- Health Care Card
- Veterans' Affairs Gold Card

Special conditions apply for firewood and generator fuel concessions. See the application form for more details.

How much is the concession?

The concession is paid annually based on the amount paid for each energy type in that year.

The rebate amounts for the 2022 calendar year are:

- \$53 for spending from \$100 to \$310.99
- \$164 for spending from \$311 to \$934.99
- \$272 for spending from \$935 to \$1554.99
- \$388 for spending from \$1555 to \$2219.99
- \$497 for spending from \$2220 to \$2839.99
- \$604 for spending \$2840 and above.

A separate rebate is paid for each energy type used.

How to apply

Application forms are available by phoning the Concessions information line on 1800 658 521 (toll free), and may also be available from LPG suppliers, local councils and caravan park proprietors.

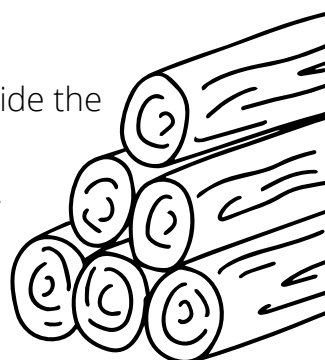
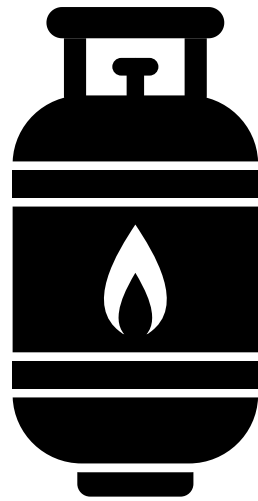
Applications for each year close on 31 December of the following year.

Applications must include copies of paid invoices or receipts.

Department staff will check your concession card details with Centrelink and provide the concession as a rebate.

For more information, phone the Concessions Information Line on 1800 658 521.

Or come into the Community Centre and we will assist to download the forms.





# Why waste it? Let's sort it.

[whichbin.com.au](http://whichbin.com.au)



EastWaste

## COMPOSTABLE VS DEGRADABLE AND BIODEGRADABLE BAGS

### WHAT IS THE DIFFERENCE BETWEEN DEGRADABLE, BIODEGRADABLE AND COMPOSTABLE BAGS? WHICH BIN SHOULD YOU PLACE THEM IN?

#### DEGRADABLE

Degradable bags are made from plastic with other chemicals added (including heavy metals) that cause the plastic to break down and disintegrate over time when exposed to sunlight and heat. If degradable bags are released into our environment they become quite problematic as they break down into hundreds of tiny pieces of plastic. Animals can consume the smaller pieces of plastic more readily than they would if the bags were still whole. It is also much more difficult to remove hundreds of tiny pieces of plastic from the environment than it is to remove a single bag.



**Which Bin?** Degradable bags should only be used for and placed into your **general waste bin**.

#### BIODEGRADABLE

Like degradable bags, biodegradable are often still plastic bags that have microorganisms added to break down the plastic.

**Which bin?** Biodegradable bags should only be used for and placed into your **general waste bin**



#### COMPOSTABLE



Compostable bags are made of natural plant starch, and do not produce any toxic material. Compostable bags break down readily in a composting system through microbial activity to form compost. In order to be classified as compostable they must meet the Australian Standard for compostability AS4736 and will have this symbol.



**Which bin?** Compostable bags can be used to line your kitchen caddy for collection of food scraps and then placed into the green lidded **food and garden organics (FOGO) bin**. Don't waste them in your general waste bin as they will not compost well in a landfill environment.

For further clarification check out the Jeffries information overleaf or go to [jeffries.com.au](http://jeffries.com.au)  
Go to [whichbin.com.au](http://whichbin.com.au) for more information on 'which bin' to place your household materials in.

EastWaste

# HOME ENERGY EFFICIENCY COURSE

## COURSE OUTLINE

- Develop a thorough understanding of the key aspects of home energy efficiency & comfort.
- Learn about fundamental residential appliances and upgrade options, including solar generation & storage.
- Understand key building shell upgrade opportunities, catering to all budgets and including DIY & temporary options.
- Develop skills in communicating energy efficiency advice to a diverse range of community members, in a way that is positive, respectful and promotes active engagement and change.

**TRAINER | LUCINDA FLYNN** [goinggreensolutions.com.au](http://goinggreensolutions.com.au)

## ONE-DAY

## BOOK YOUR PLACE

- Mallacoota (18/08/2022)  
Tricia Hiley 0412 312 881
- Bruthen & District Neighbourhood House  
(20/08/2022)  
Annie Pearce 0497 544 490
- Leongatha Community House (21/08/2022)  
Madison Redpath (03) 5662 3962
- Morwell Neighbourhood House (22/08/2022)  
Tracy Lund (03) 5134 5488

## LEARN HOW TO MAKE YOUR HOME ENERGY EFFICIENT

## WHY JOIN US

- ✓ lower power bills
- ✓ improve health
- ✓ reduce draw on environment
- ✓ localised training

Cost: \$25 per person



Lunch and refreshments included  
[rowena.mcnaughton@gccn.org.au](mailto:rowena.mcnaughton@gccn.org.au)

9am-5.00pm



Councillor Corner  
**From Councillor Sarah.**



Hello and apologies for skipping a month, it has been a huge time in Council with our major plan adopted at the last meeting. To look at the new Council Plan, Arts, Health and Wellbeing, Social and affordable Housing, Wastewater management, Municipal Emergency Management, Advocacy and many other strategies head to the council website. [Council Strategies & Plans | Council Strategies | South Gippsland Shire Council](#)

A conversation with a Walkerville resident recently left me with the question, “are people cold at night?”. The sad answer is some are and I’m as keen as anyone to make sure our communities are looking after the elderly and disadvantaged among us. I think everyone understands the impact winter and Covid has had and I really hope everyone is ok, if you are struggling please reach out to council, they can hook you up with the many support groups and agencies paid to help our communities.

This week I went to a number of community meetings across the Coastal Prom ward and am thrilled to say in many towns there are signs of the people who moved during Covid connecting to our business associations, community groups and volunteer committees.

But not all, many groups are struggling to attract newcomers and I encourage those groups to get in touch with the Community Strengthening team at council, let them know what they need help with. For many it’s hard to connect to newcomers and core to our new council plan is a commitment to supporting community led solutions and volunteers, we know without you the wheels would fall off!

In Venus/Tarwin we have a Business Association (BARBA) in stasis that could be applying for grants and projects for the town but doesn’t have the membership. This association has been legally kept alive to auspice grants and other community ideas but at the moment, its doing nothing and that’s crazy in my books! There’s grant money around, council are wanting to engage with community organisations and support community led ideas. We are missing out without a business association, anyone want to take the reigns? You don’t have to have a shopfront, you could be a microbusiness owner.

We also have a really fantastic and seriously underutilised Health and well-being Centre in Tarwin limping along for a long time, since joining council I have lobbied State Govt, the Primary Health Network, South Gippsland Health and many others to see if we can get support to attract a GP, to expand our local health services. This is massive issue regionally with no quick fixes.

Whilst there is a lot of advocacy going on the latest census data has set us back, the data says we have decreased in population since 2016.. we all know that’s bonkers but its not helping funding arguments. We were not alone in this gap in the census data, people are living across two residences and the data was collected in the middle of lockdown when a lot of people weren’t allowed to be here who would have been the 3 or 4 day a week crowd. There are anomalies in the way places like Venus Bay and Tarwin are populated that are difficult to capture in the census.

So bring me your ideas for community data collection, let’s get clear about who lives here how much, community plans held at council need revisiting. As many of you know working tirelessly on grants and new ideas for our communities, t’s really hard to advocate for all those things without the right statistics and community back up on grant applications.

In the mean- time, the Tarwin Health Centre needs a local approach, it’s a beautiful facility with consulting rooms, meeting spaces, event spaces and resources galore for community use. Get involved, bring your ideas – the AGM is being held on Monday the 22<sup>nd</sup> of August, 11.45am. Use it or lose it!! Get in touch at [tarwinlowerchc@gmail.com](mailto:tarwinlowerchc@gmail.com) or phone 5667 5680. Cheers, Cr. Sarah Gilligan.

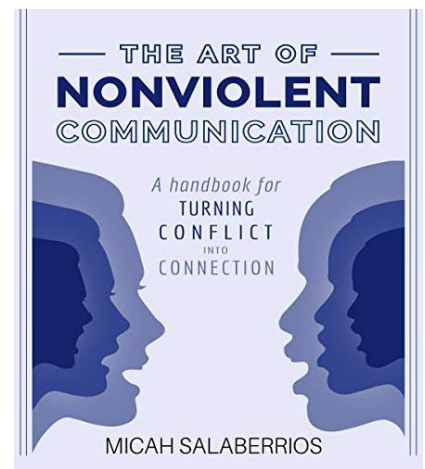
# Calling women

## of all ages and stages

Let's get together to grow, learn and change

This book gives tools and strategies to help you:

- Communicate with more authenticity, clarity and empathy while in the midst of conflict
- Learn to speak with 100% authenticity without judging, blaming or condemning anyone.
- Turn every conflict into a deeper, more profound connection.



**Continues on**  
**Thursday 11<sup>th</sup> and 25<sup>th</sup> August**  
**@ 10.30 a.m.**

**Tarwin Lower Church tea room**

Further details from Marlene (0419 345 128)



## Tarwin Lower Mechanics Institute Memorial Hall – *What's the buzz?*

Yes, we are in AUGUST! I cannot believe it. Though our next Market is not until Monday 31 October for Melbourne Cup long weekend our committee of management has been meeting monthly to discuss ideas and programming for a terrific summer of events and musical offerings into the first half of 2023.



A big thank you the South Gippsland Shire Council and Wendy Don from 'Grants Only Group' for their assistance in securing this grant of \$10,000 for the Weatherboard Repair Project. Here is a pic of Philip Scott, me and Ray Saunders at the Council Chambers receiving the grant. This project is due to begin in August, so I hope to bring you updates as we open Pandora's box and start ripping the exterior walls apart!

The **Tarwin Lower Film Society** has their next screening "Nomadland" starring the wonderful Frances McDormand on **Friday the 19 August 2022**. A woman in her sixties, after losing everything in the Great Recession, embarks on a journey through the American West, living as a van-dwelling modern-day nomad. I loved this film! Purchase your membership online at [Trybooking.com](https://trybooking.com) and enjoy a wonderful night at the Hall. Get a table together or just join one and meet some new people! BYO your drinks and snacks – you won't regret it.

Doors 7pm; Film 7:30pm.

Click [here](#) for more info on membership for 2022/23 and upcoming movies.

Lastly, the Hall now has WIFI for the use of community hirers. If you are looking for a venue to host your event, AGM or community group meeting the Memorial Hall is for available for bookings. Enquiries to [tarwinlowerhall@gmail.com](mailto:tarwinlowerhall@gmail.com)

Remember: "If you think you are too small to make a difference, try sleeping in a room with a mosquito." — African proverb quoted by the Dalai Lama

Cheers

*Marg de Wolff*

Secretary, Tarwin Lower Mechanics Institute Memorial Hall

Committee of Management Inc

Manna Gum  
Community House  
welcomes special  
guest speaker Mark  
McManus from The  
Restoration Project



Mark's story is one of hope and  
inspiration about his personal journey  
through drug addiction and  
rehabilitation

***Join us....***

---

Wednesday 3rd August @ 7pm

Light supper provided

RSVP 5682 1101



*"(Mark) spoke so professionally like a  
motivational speaker and it was so real & raw. I  
love and admire (his) positivity and strength... I  
think (his) story needs to be told to everyone!"  
Lee Mackay - author*



## Spoon Making workshop - September

It's a spoon, but so much more.

Spoon carving is an age-old craft that links us to the skills of traditional hand tool woodworking transforming one of life's essentials into an object of artistic expression.

This workshop will introduce you to the pleasure of working wood with your hands, combining the sight and smell of fresh-cut shavings with old-world practices and modern knowledge to craft a beautiful and functional object.

Learning techniques & ideas that can serve as a foundation that will allow you to grow through your woodworking shaping the world and changing your connection to trees, wood and timber in a profound way.

Following the interest generated from the Demonstration Workshop conducted by Helmut Burri earlier this year, he is now offering a 2-day workshop for you to learn to make your own spoon. All bookings are to be made through the link below or through Helmut directly.

Details:

- No previous woodworking experience is required to undertake this course.
- The course will run over two days from Saturday the 24th of September from 10 am to 4 pm, and Sunday the 25th of September from 11 to 5 pm with a 30-minute break at 12:30 each day
- Cost: \$200 and includes tea and coffee, all tools, materials and expert tuition (max class size 6 people).

Bookings: <https://events.humanitix.com/venus-bay-community-centre>







SATURDAY 29<sup>th</sup> October, 2022 - 12am – 4.00pm.

Tractor Demonstration Only - \$5.00 entry.

### MAIN DAY

SUNDAY 30<sup>th</sup> October, 2022 - 9.30am – 3.30pm.

Patrons: \$10.00 per adult, under 16yrs free.

Car/bike Exhibitors: \$10.00 includes one passenger.

TARWIN LOWER RECREATIONAL RESERVE  
WALKERVILLE RD, TARWIN LOWER.

Cars, Motorcycles, Tractor Demonstrations, Trucks, Army Tank, Stationary Engines, FREE Children's Activities, Food, Market, CFA, CERT, SES Displays.

A Family Fun Day.

All Welcome, Market Stalls available.

General Inquiry:

Graham Kennedy 0431 442 682

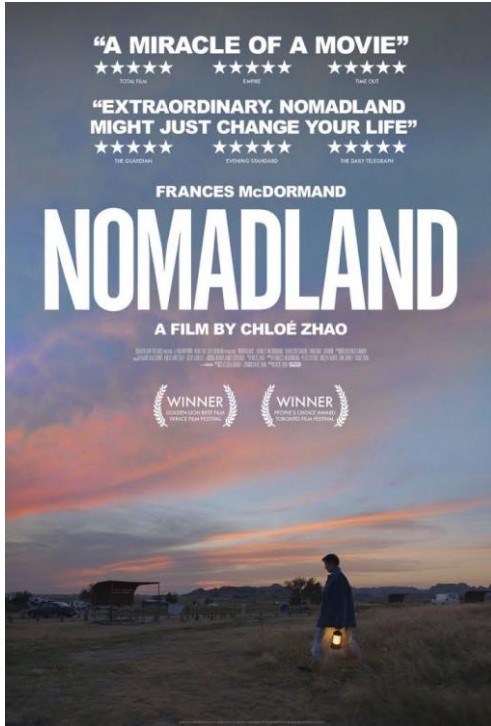
Stall Inquiry:

Lisa Breen 0412 105 004

Tractor Demonstration Inquiry: John Harris 0438 635 286

## NEXT FILM

Scheduled for Friday 19th August and is an Oscar nominated USA film made in 2020 called "Nomadland".



Movie begins at 7:30pm. Doors open at 6:45pm.

See link to trailer below:

[\(157\) NOMADLAND | Official Trailer | Searchlight Pictures - YouTube](#)

Films are screened at the Tarwin Lower Mechanics Institute Hall.

Memberships are available at [Trybooking.com](https://www.trybooking.com) (Click "Buy Tickets" and search for Tarwin Lower Film Society).  
12 months (from July 2022 to June 2023) - \$60  
3 months (consecutive films) - \$25.

Alternatively, you can find a TryBooking link at the [tarwinlowerhall.com](https://tarwinlowerhall.com) website.

For convenience, a link to Trybooking website can also be

found below:

<https://www.trybooking.com/BTOXM>

We look forward to seeing you in August.

Any queries can be sent to [tlfilmsociety@gmail.com](mailto:tlfilmsociety@gmail.com)

### **Nomadland – Rated M**

**Synopsis:** A woman in her sixties who, after losing everything in the Great Recession, embarks on a journey through the American West, living as a van-dwelling modern-day nomad. Stars Frances McDormand.

### **Reviews:**

- A poetic character study on the forgotten and downtrodden, *Nomadland* beautifully captures the restlessness left in the wake of the Great Recession.
- The magic of that bigger canvas is that you become a different person for having watched *Nomadland*. Knowing these people and places changes your perspective.
- Featuring one of McDormand's best performances - a role she occupies deeply - and emotionally dissecting the economic terrors of backwater America, 'Nomadland' is one of the best of the year.

Regards, Anne Cox

Secretary Tarwin Lower Film Society

0432 494 531



# Do you have a few hours to spare?

We are always looking for volunteers to help out at the community centre...do you have any particular skills you can contribute? Or perhaps you have a bit of time to spend helping with filing in the office or sorting donations for the Recycling enterprise?

Every bit counts and every bit is appreciated. We could not function without our fabulous team of volunteers.

So why not come and join in!

Situated at 27 Canterbury Road, Venus Bay.

Phone: 5663 7499, Send mail to Post Office Box 786, Venus Bay 3956

Email: [info@vbcc.org.au](mailto:info@vbcc.org.au) Website: [www.vbcc.org.au](http://www.vbcc.org.au)

Opening hours reflect the season - please check our website or Facebook for details

or call Alyson 0416 242 331

Venus Bay Community Centre is supported by:

Department of Health & Human Services (Victoria) and the Commonwealth Government, South Gippsland Shire Council.

Our website is [www.vbcc.org.au](http://www.vbcc.org.au)

Find current and back issues of Matter Of Fact on our website. Please contact us if you wish to be on our email distribution list.



**VENUS BAY**  
COMMUNITY CENTRE