

MATTER OF FACT

a free community newsletter published by
Venus Bay Community Centre

SEPTEMBER 2022 Vol 9 Issue 13



Providing information for
Venus Bay, Tarwin Lower
and Walkerville district

VENUS BAY
COMMUNITY CENTRE

We acknowledge the Traditional Owners of Country throughout Australia and recognise their continuing connection to land, waters and culture.

We pay our respects to their Elders past, present and emerging.

VENUS BAY COMMUNITY CENTRE

School holiday activities

Monday Sept 19th

Worm farms, Nature craft, Planting and hairy pets

Wednesday Sept 21st

Author visit - Kelly Wilson - making books and bookmarks, play dough & hula hoops

Thursday Sept 22nd

Pick of the hat masterpieces, inside out creations, animal friends and clothes for your dolls

Monday Sept 26th

Dream catchers and sun catchers, jewelry making, Tie- dye shirts

Wednesday Sept 28th

Music makers - make your own instrument and jam session at 11am

Thursday Sept 29th

Mini golf and turf toys

All activities run from

10am - 12.00pm

Cost: \$8 per child



THE FLOODS

Amazing footage and photos of our district as we experienced severe flooding in the last couple of weeks. It was so great to see everyone looking out for each other, sharing information and a massive thank you to all our emergency service volunteers! Keep up to date : Vic Emergency App or [VicRoads site](#)



Warnings for the Tarwin Valley

BoM does not issue river height predictions for the Tarwin River.

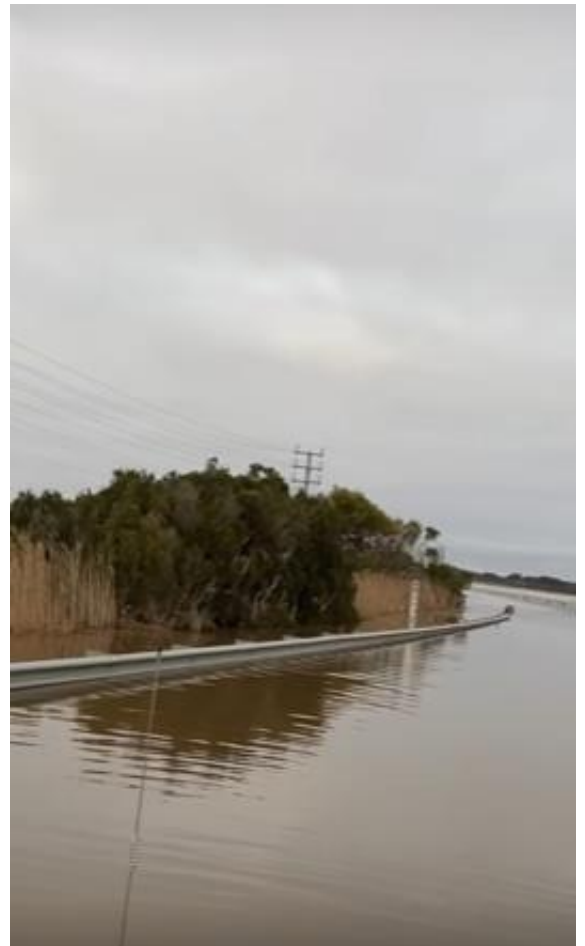
Warnings issued by BoM may provide information about when flooding is possible in the town, but not specifics such as river height predictions.

If flooding is likely, tune into emergency broadcasters to watch and listen for information relating to the Tarwin River the West Gippsland Catchment or the West and South Gippsland weather district.



Information about potential floods will also be available from SES. You can monitor rainfall and river levels on the BoM website at bom.gov.au

[MORE INFORMATION ON LOCAL FLOOD GUIDE – Tarwin Valley Flood Guide](#)



Your Local Flood Information

Know your risk

Are you at risk of flooding?

The Tarwin Valley is subject to riverine flooding, flash flooding, and coastal storm surge flooding, which has a similar effect to King Tides. The Tarwin River can flood due to prolonged rain over a number of days, causing the river to rise and burst its banks.

The southern floodplain and areas downstream from the town towards Venus Bay are more likely to experience flooding from storm surges. Storm surge flooding is common during winter months and is caused primarily by prolonged south-westerly or westerly winds that accompany cold fronts, causing flooding in low-lying areas. If this happens during a high tide, the effect of flooding is greater.

Driving through floodwater is dangerous. In minor flooding events, plan your travel to and from Tarwin Lower and Venus Bay during low tides. The Bureau of Meteorology publishes daily tide charts at **bom.gov.au**

During flooding, the Tarwin River can change flow direction as it is influenced by the tides. When the tide is rising, and the river is flowing quickly due to high rainfalls upstream, the river can change direction slightly crossing the Inverloch-Venus Bay Road south of the Tarwin River Bridge near the fishing platforms. This area is incredibly dangerous for drivers and often closes during flooding.

Once you enter the floodwater, you cannot turn around due to the strong water currents.

Never drive through floodwater - you don't know what you're getting into.

Useful contacts

Your local emergency broadcasters are:

- Gippsland ABC 100.7 FM or 828 AM
- 3GG 531 AM
- Star 94.3 FM
- SKY NEWS Television

South Gippsland Shire Council contact details:

Phone: (03) 5662 9200
Web: southgippsland.vic.gov.au
Email: council@southgippsland.vic.gov.au

Bureau of Meteorology tide charts

Web: bom.gov.au/australia/tides/

Map two: Venus Bay Riverine Flooding





Introducing Winston.

Winston whale is made from recycled denim and he's one of the pod at the VBCC. It's a small pod but it's getting bigger. Week by week, as word gets around, whales of all shapes and sizes join the pod. They're all unique and they all have big personalities.

Winston wants you to know that all the whales in the pod have been made from the VBCC op-shop offerings by volunteers. Come and say hello to the pod. Maybe you would even like to help grow the pod. You'll have fun for sure but you'll also be investing in the welfare of whales everywhere. Caring for the environment, reducing waste, reusing and upcycling. All has an impact on our oceans and the life in them. Pollution kills whales.

Whales swim along our coast at this time of year. Humpback, Southern Right, Orcas and Blue whales all make an annual pilgrimage to give birth and raise their calves in our warmer waters.

You can help us create an awareness of whales. Get started by making your own wonderful whale from recycled denim at the VBCC Whale Workshop on Wednesday 21st of September 2.00 – 5.00



Winston and the rest of the pod will be there for inspiration and we'll provide all the necessities.

WORKSHOP

Upcycle Project – Make a Whale

(This workshop is for adults or over 12 accompanied by an adult)

Make your own whale using denim (supplied) or bring along an old article of your own clothing.

Be creative

Have fun

Meet people

Learn how to construct and personalize your own unique whale.

Each whale will be different. What style will yours be?

No sewing experience necessary, we can help you with that.

Wednesday 21st of September 2.00 – 5.00.

\$10.00 per whale

Stay on for our Night stitching gathering afterward from 5.00 – 6.30.



Following the Annual General Meeting of the TLCHC recently, it is wonderful to see community members step up to assist this essential service for our district. The Health Centre extends its thanks and gratitude for previous committee members and now welcomes the new committee:

The following people were elected at the AGM on August 22nd, 2022.

- President: Teresa Davison;
- Vice President: Vacant;
- Secretary: Brian Henderson;
- Treasurer: Ray Saunders.

The Health Centre is always looking for volunteers to help out with reception, gardening or general duties – get in touch via their website: [Tarwin Health](https://www.tarwinhealth.org.au/)

New Service at Tarwin Lower Community Health Centre.

Judy Stampton is a qualified Occupational Therapist and Yoga Instructor who will be commencing OT support for mental health for ages 16 years and older. Judy also has teaching experience and is a certified personal trainer.

Her support will include pain management, sleep support, goal setting, trauma recovery and assistance for depression and anxiety.

Judy is a certified Circle of Security facilitator and can provide parenting education and support individually and in groups.

Judy is starting at the centre on Wednesdays from September the 7th. Feel free to call and arrange a session on 0460894780.



Shark Disc Park update

We are progressing well with Shark Disc Park. We are now a user group and member of the committee at the Tarwin Lower Rec Reserve and have been receiving tremendous support.

We have secured our Public Liability Insurance through Tom Williamson - BJS Leongatha. The 3 Corporate Baskets have been installed recently - we have 1 more to be installed along the side of the Football oval and that will complete the 11 holes. A working bee will be organised soon for ongoing planting out and course maintenance.

Once the warmer days arrive, we will be endeavouring to run more local competitions. Updates will be available through our Facebook site - Shark Disc Park Club.

Thanks to Black Bear Fabrication, Ben ,Mak , Poppy and Trixie have installed another 3 baskets on the course!!!! Just a reminder to all of how lucky we are to have our baskets locally constructed by Black Bear, cheers m8!!

The 2 memorial baskets have been installed for Mocca and Agro. A massive thanks to the kindness of the community donating for making this happen (we had over 25 locals pitch in for the costs of the baskets). We felt that it was fitting to have Mocca on the first hole after the countless hours of work around the Tarwin Recreation Reserve that he donated. Hence the word for a hole in one on our course is known as a "mocca".

Happy flinging everyone!!!!



COMMUNITY ENERGY for Venus Bay?



Community Resilience and Reliable Energy Feasibility Study at Venus Bay

let's talk about the possibilities of community owned energy!



Keep up to date with planned community consultations via the timeline on the back. For more information scan the QR code or head to: vbcc.org.au/communityenergy

Co-designing our Future

Over the next 10 months full- and part-time residents, business operators, community organisations and visitors of Venus Bay and District are invited on a **journey** to build on the strength and **resilience that exists already** in our community.

The Venus Bay Community Resilience and Reliable Energy Study (Community Energy Study) will strengthen our resilience as we lead conversations and inform design of a reliable energy supply that can support our needs when mains power is unavailable.

There are four public workshops planned from October 2022 through to June 2023. These workshops are one of the main opportunities for local people to share their ideas, listen to others, hear from, question and inform expert advisers who will help design an energy system that is reliable, affordable and supports our resilience.

By June 2023 we'll have a **Plan** for how we can fund and build the best energy options for Venus Bay.

Besides the workshops, everyone is invited to contribute through surveys, information sessions, street stalls, popping into the Community Centre for a chat or submitting comments via email/website. The more voices that are heard, the stronger our plan will be.

All these opportunities are shaped by principles and practices of **Codesign**. Codesign is different from your usual consultation process. It's an approach to designing with, not for, people. Codesign elevates the voices and knowledge of people with lived experience. For the Venus Bay Community Energy Study, codesign means everyone's input is equally valued for informing, researching, decision-making, and ultimately in designing a bespoke community energy system to meet our needs.

Sparking Ideas

Challenging events, such as the fire that cut off Venus Bay last New Year's Eve, several unscheduled power outages, and recent flooding that cut roads and isolated our towns – require us to be resilient.

In preparing for **Community Workshop #1 on Saturday Oct 1st** let's all think about our resilience and what we need when these events happen.

We've heard a range of ideas in the past 12 months, and from people who recently attended the Study launch. Here is a sample of what local people are saying: **What excites me is how we can support each other; can we share our excess energy? I'm excited about doing blue sky thinking, exploring what is possible; it's a great time in renewables to think big; I'd like to hear about other community energy projects; I want to know more about our energy consumption and the best options to meet it with renewables; I hope the project can help people keep the lights on and help us feel safe; I hope we can get past energy loss or grid breakdown during times of emergency; communication is the biggest thing – keeping informed and knowing what is happening in times of emergency.**

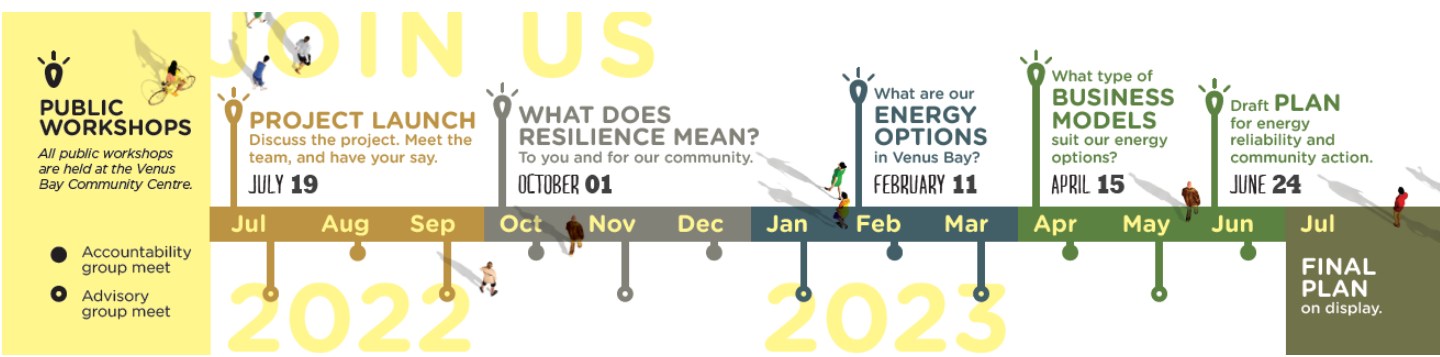
Please keep sharing your thoughts and questions so our Community Energy Project is built on diversity and inclusion. Drop in to VBCC for a chat or call or email Alyson – 0416 242 331, alyson@vbcc.org.au

For inspiration check out these community energy links:

[Totally Renewable Yackandandah](#)

[Totally Renewable Phillip Island](#)

[Community owned renewable energy – a how to guide](#)





COMMUNITY ENERGY for Venus Bay?

Community Resilience and Reliable
Energy Feasibility Study at Venus Bay

*let's talk about the possibilities
of community owned energy!*



Keep up to date with planned
community consultations via the
timeline on the back. For more
information scan the QR code or head
to: vbcc.org.au/communityenergy

Brilliantly Resilient

Resilience means different things to each of us. How we express resilience is related to our life circumstances, experiences and the challenges that confront us.

In the Venus Bay Community Resilience and Reliable Energy Study, the main focus is on resilience as it relates to electricity supply and what we do now and could do in the future when mains power is unavailable.

Throughout the Study local people are being invited to consider **resilience of what?** We will begin by exploring resilience through the key ideas shown in the infographic below.

Energy sits behind most of our everyday comforts and basic needs. Based on information people have shared so far, energy for cooking, hot water, light, and refrigeration are featuring high on the priority list. Other considerations include infrastructure that relies on electricity, particularly water pumping and mobile phones.

In the last month there has been at least one major electricity outage and a flood in the district. Other priorities may have arisen related to energy use, during these times.

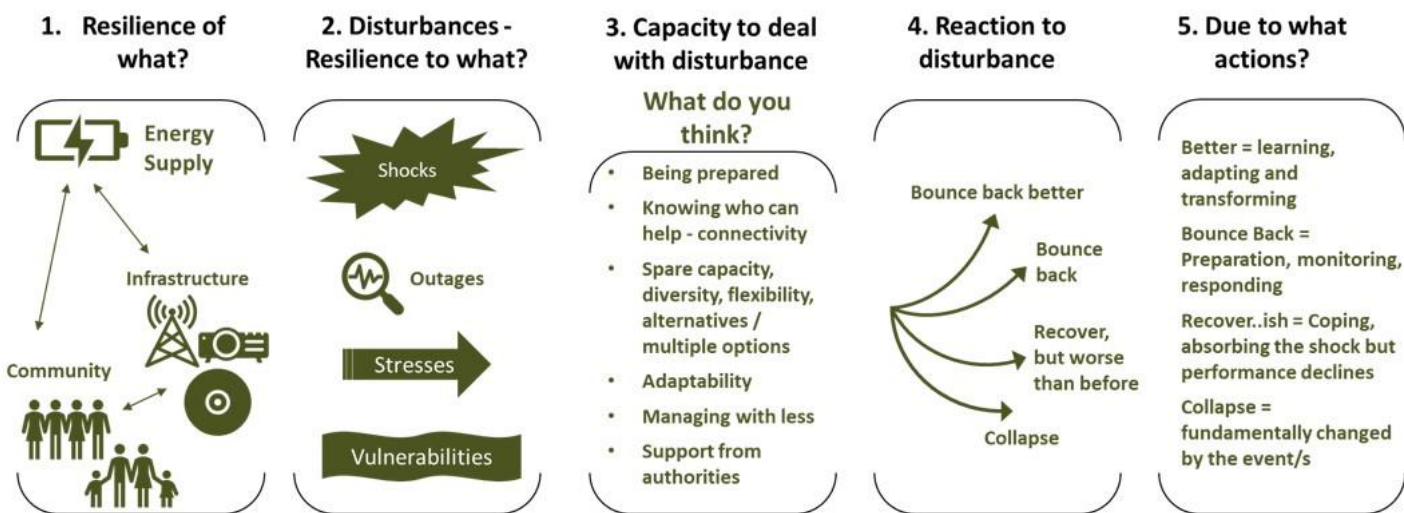
Emergency management experts often point out that resilience is to be found in the relationships between people and in our relationships to technology and infrastructure. You may have noticed a growing reliance in your life on access to the internet, to get news and information, to get money and sometimes to operate our digital systems.

What challenges cause you the most inconvenience when the power goes down?

Is it different at different times of the year or due to the cause being a flood, fire or storm event?

What else have you become reliant on? What is your back up strategy?

We will explore these questions together during the first Community Workshop on Saturday October 1st, 2022.



An **Advisory Group** with representatives from the local community, businesses and community groups along with representatives from agencies, Council and industry has formed to closely advise the Facilitation and Research Team. Advisory Group members bring different perspective to the Study and insights on how best to engage people. Other opportunities are being created to involve people throughout the 12-month Study.

Community Workshop #1 – What does resilience mean for each of us and our community?

Saturday October 1st, 2022. Venus Bay Community Centre 12 noon to 3 pm.
Lunch included – RSVP alyson@vbcc.org.au

JOIN US



Community Energy Resilience and Reliability Feasibility Study at Venus Bay

Resilience workshop

Come along to share your ideas about what resilience means to you, to our community and for our future.

This project depends on community input and engagement.



This is a **FREE COMMUNITY EVENT**.
Your registration will help us with catering.
To register, scan the QR code or head to
vbcc.org.au/communityenergy

**VENUS BAY
COMMUNITY CENTRE**

27 Canterbury Rd Venus Bay

LOCAL COUNCILLOR UPDATE

Welcome to September... Apologies for the slab of text, so much to tell you!!

First up I'd like to give **huge shout out to locals Julian Seri, Michael and Sue Moore, Michelle Ford and Bec Owen** for their exceptional commitment to community and wildlife safety. During the recent floods these legends were out there monitoring and reporting all that was happening so you could all make plans and I could feed the up to date info back to the agencies. Thankfully the river played nicely and didn't jump the road but its got me thinking....

After new years eve I'm hoping you have your **fire plans** ready, nothing fancy, just a plan and a "go box" by the door. If you don't know what a "go box" is then I suggest you get cracking – it's the thing you grab when leave fast, packed with a battery radio, water, blanket, change of clothes, spare medication etc. For those renting your place out, please make sure there is information and a go-box for your guests.

Here's a handy template for you to work out what to put in it. [get-packing.pdf \(redcross.org.au\)](https://www.redcross.org.au/get-packing.pdf)

But how many of you have thought through **flood plans** and have you checked you are insured for flood? I found out I'm insured for flood but not acts of the sea...Recent scientific modelling by DWELP as part of the Cape to Cape Resilience Project shows Venus Bay may turn into an island with roads cut off but the housing will probably remain high and dry, some areas of Tarwin Lower are more vulnerable. The Walkerville Rd has in the past stayed open in flood but its important everyone has a plan for what it means to be shut in should we not be so lucky in the future. Try and find out who in your street is most vulnerable in these conditions and make a plan to help them.

The Red Cross have a great **template for an emergency plan** that covers fire and flood, do it now, don't wait for the smoke or rain! [rediplan-lite-interactive.pdf \(redcross.org.au\)](https://www.redcross.org.au/rediplan-lite-interactive.pdf)

On a brighter note we've had a win - there is a new President of the **Tarwin Lower Health Centre** and I'd like to welcome Teresa Davison to the fray, Teresa is excited about the possibilities and I'm excited about Teresa!

Whilst **health and public transport** are not Council responsibilities we've been advocating hard with the Primary Health Network, Gippsland Southern Health and all sorts to explore our community needs and how this underutilised Tarwin Community Health centre can thrive and help people here without public transport and all the larger town services.

Our population has grown and not only do we have an ageing community but have you noticed we've got more babies and kids around? Yay! The Health Centre has an important role in our future to support our families, elderly and everything in between live here and stay here. If you have ideas/wants/needs regarding the Tarwin Health Centre get in touch with Teresa via email – d.teresa@gmail.com

If you'd like **to support the call for State Govt investment in our local health services** then I'd encourage you to get in touch with Danny O'Brien – danny.obrien@parliament.vic.gov.au, If you'd prefer face to face, Danny will be in our area on the 8th of September - line up an appointment by calling his office on 5144 1987.

Rates are here and I'm sure you along with many coast dwellers you've had a shock. Council rates are calculated off property valuations, the MASSIVE rise in property value in our Prom Coast region

(particularly Venus Bay with an increase of over 70%) has meant we are carrying a bigger load of rates across the shire this year, our popularity has caught us out.

For those wondering **why rates are so much more than many more than regions such as city suburbs or places like Mornington it comes down to maths** - we are a sparsely populated shire with a large geography, we are not wealthy and cover a lot of ground. We do punch above our weight in getting state and Federal govt grants to supplement our challenges, believe me its not only your money at work supporting our 28 communities and towns.

I hope I don't sound too harsh when I say I'm a little tired of people comparing our council rates and services to the city where the distances, wealth, local resources and needs are really different... but believe me I know it hurts, we all pay a high price to live and holiday in a remote beautiful place. But **if you are struggling with paying your rates please ring council on 03 5662 9200** and work out a plan, we are not the enemy and understand.

On a happier note do have some **exciting projects** coming up that should ease the pain, council are spending big bucks in VB shortly 😊 with the **Venus Bay Skate Park** before the end of the year and **the Jupiter Boulevard shops street and footpath upgrade** due after Easter in 2023. **Tarwin is next** on my hit list for attention with a community plan and advocacy for the Rec reserve masterplan in train.

In the new council plan we also have a **Coastal Strategy** budgeted to assess the future of our coastal townships. Unconstrained residential and tourism growth is clearly not sustainable and this is what the strategy will assess, how many people is enough, how do we balance people and environment? Plus we have put in budget to look at plans and engineering for our **footpaths/or lack of in the Western end of the first estate**, the primary dunes make this tricky but with more and more cyclists and pedestrians we need something.

Last week I was thrilled to be joined by many of my fellow councillors at the **Tarwin Footy club** for Thursday night training and a roast. We all had such a great time and it was good to talk to the community about what's going on and what the priorities are. **GO SHARKS** and thanks for the roast and gravy Dean Ellen and Colin McMicking, thanks for letting us invite ourselves along, we had an absolute ball 😊

Council are currently looking for submission and feedback regarding its draft **Domestic Animal Management Plan**. I know many of us have talked about the need for dog off leash areas, better management of dogs out and about and cat curfews. NOW is the time to have your say where it will make a difference, not on facebook, write an email make a phone call, make a submission. Here are the details - [Domestic Animal Management Plan | Your Say South Gippsland](#)

Finally I'd encourage you all to look at the Federal Govt plans to turn South Gippsland into an **offshore wind farm zone**. Get informed and get involved! [Consultation hub | Provide your feedback - Offshore renewable energy infrastructure area proposal: Bass Strait off Gippsland - Department of Industry, Science, Energy and Resources](#)

Gosh we've got a lot going on in our corner of the earth and I love it all! Stay safe everyone, spring is coming.

Cr. Sarah Gilligan.

EAT AND PLAN IN SEPTEMBER

Recent flood events, and NYE fire in Venus Bay make it even more essential to have an **ACTUAL FIRE & EMERGENCY PLAN** – one written down, on the fridge, shared with your family and considering all sorts of scenarios – what if I am completely cut off, what if I have pets, where can I find information – there will no doubt be Plan A, Plan B, Plan Cdepending on circumstances.

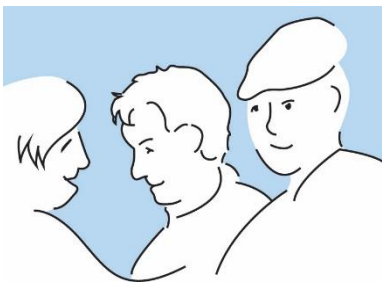


While there are resources online to help you develop a plan – our wonderful **CFA CAPTAIN MICK MOORE** has offered to come along every Wednesday in SEPTEMBER to the Community Centre from **10am to 12 noon**, followed by a yummy shared lunch to assist you to develop YOUR PLAN.

In the meantime – it's SO important to keep up to date with LOCAL INFORMATION via the [VIC EMERGENCY APP](#).

Let us help you install it – and learn how to turn off notifications you might not need, set your watch zone, etc.

EVERY WEDNESDAY
IN SEPTEMBER –
VENUS BAY
COMMUNITY CENTRE



Registered Nurse Wanted

To assist a local gentleman with a disability continue living in his own home and accessing his community. You will need to take a holistic approach to the gentleman's needs including nursing care, medication, monitoring, record keeping and documentation to keep the gentleman safe, healthy and active.

Flexible shifts include day, evening and overnights, weekdays and weekends

You will need to have current APRAHA registration, undergo a worker screening check, and have up to date flu and covid vaccination and booster.

For further information or for a job application please contact Peta on 0438 684 579 or email admin@adamsupport.org.au.



Silver Banksia

Plant group

Mondays

10.00 - 12.00

Book Club
2nd Tuesday
of the Month
5.00 - 6.30



Current
book

**FREE Community
Lunch
Wednesdays
12.00**



A stitchin time
social sewing
group

3rd Wednesday
of the month
5.00 - 6.30

Nibbles and chat
BYO project



Sewing mornings every wednesday

BYO Project or help
with upcycling
projects

Play group

Thursdays

10.30 - 12.00



Spoon Making workshop - September



Gippsland School Of Fine Woodworking

It's a spoon, but so much more.



Spoon carving is an age-old craft that links us to the skills of traditional hand tool woodworking transforming one of life's essentials into an object of artistic expression.

This workshop will introduce you to the pleasure of working wood with your hands, combining the sight and smell of fresh-cut shavings with old-world practices and modern knowledge to craft a beautiful and functional object.



Sat 24th & Sun 25th
Sep 2022, 10:00 am
to 4:00 pm AEST

Venus Bay
Community Centre

Details:

- No previous woodworking experience is required to undertake this course.
- The course will run over two days from Saturday the 24th of September from 10 am to 4 pm, and Sunday the 25th of September from 11 to 5 pm with a 30-minute break at 12:30 each day
- Cost: \$200 and includes tea and coffee, all tools, materials and expert tuition (max class size 6 people).

Bookings: <https://events.humanitix.com/venus-bay-community-centre>



**NEW BICYCLES
AVAILABLE TO
HIRE \$20 PER
DAY**

**WE ALSO HAVE A
TRIKE
deposit & registration
required**



**Trailers for public
use within the local
area only. These do
not require
booking. Please
return when
finished using.**

**Disc golf - discs
available for hire from
the Centre.
Course is located in
Tarwin Lower. See
their facebook page
for more details.
Shark Disc Park Club.**



Tarwin Lower Mechanics Institute Memorial Hall – *What's the buzz?*

As the rain continues to fall and we successfully survive yet another extreme weather event I can happily say the Memorial Hall didn't even get her feet wet! I have exciting news to share on many fronts this month.

Beginning **Tuesday 6 September 10:30am** Tracie Mitchell will bring her yoga classes each week to the Hall. This is such a great partnership, and we hope Tracie and her yogi's enjoy the space. Bookings essential - Please call or text Tracie to secure your place on the mat 0421 300 407. Spring is coming....time to tone up!



The Tarwin Lower Film Society has their next screening “Emu Runner” starring the Wayne Blair and introducing young actor Rhay-Kye Waites on **Friday the 16 September 2022**.

‘A spirited 8- year-old girl deals with the grief of her mother’s death by forging a bond with a wild emu. This spiritual dreaming is a bond she will do anything to keep, but one that puts her at odds with the new social worker.’ Purchase your membership online at [Trybooking.com](https://trybooking.com) and enjoy a wonderful night at the Hall. Get a table together or just join one and meet some new people! BYO your drinks and snacks.

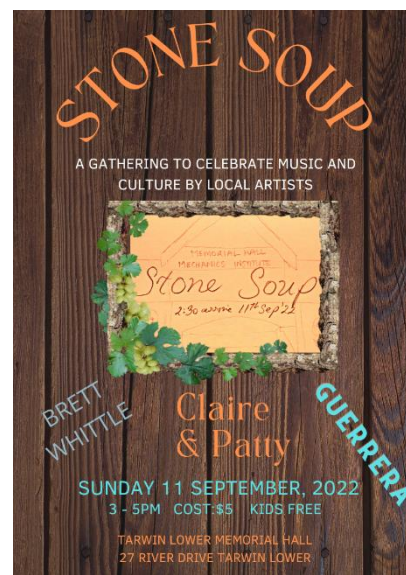
Doors 7pm; Film 7:30pm.

Click [here](#) for more info on membership for 2022/23 and upcoming movies.

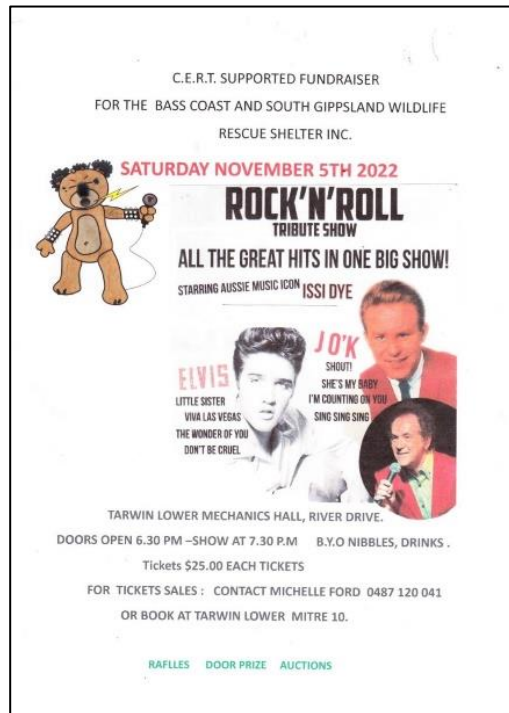
To kick off spring Claire Wieland and Friends are bringing their delightfully personal brand of family entertainment with soothing vocals and stirring beats of ‘Stone Soup’ to the Hall **on Sunday 3 September at 3pm**.

Entry \$5 Adults at the door – Kids free! Come along to find out the story behind ‘Stone Soup’ and support our local artists. We hope this event becomes a regular feature on the calendar. Part proceeds will go to the TL CFA.

A reminder that our next market day is gonna be HUGE! **Monday 31 October** over the unofficial Melbourne Cup long weekend. Can't wait to see you all again. I'll have some happy news regarding our markets in next month's newsletter.



Finally – hot off the presses our amazing C.E.R.T. organisation is again hosting a fab night of Rock n Roll with Issi Dye on **Saturday 5 November, 2022**. There will be Raffles, Auctions and Door Prizes with proceeds going to the worthiest cause – South Gippsland Wildlife Rescue Shelter Inc.



Tables are filling fast – you know how this goes 😊 Tickets \$25 each Contact Michelle Ford on 0487 120 041 or book at the Tarwin Lower Mitre 10. Pronto!

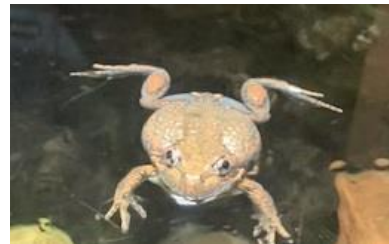
The Hall now has WIFI for the use of community hirers. If you are looking for a venue to host your event, AGM or community group meeting the Memorial Hall is for available for bookings. Enquiries to tarwinlowerhall@gmail.com

Word of the Day-

pluviophile (plural pluviophiles) (neologism) One who loves rain; one who finds joy and peace of mind during rainy days. (biology) An organism that thrives in a rainy environment. (I think frogs are pluviophiles!)

I took this pic of a Banjo Frog or 'Pobble Bonk' at the Melbourne Museum a few weeks ago. Handsome but I wouldn't kiss him.

See you 'round the traps.



Marg de Wolff

Secretary, Tarwin Lower Mechanics Institute Memorial Hall

Committee of Management Inc

Tarwin Lower Union Church



Regular services:

Saturday 5.30 p.m. **Catholic**

Liturgy/Communion on the Saturday before the 1st, 3rd, 4th and 5th Sunday of the month

Saturday 6.30 p.m.

Mass on the Saturday before the 2nd Sunday of the month

Sunday 10.30 a.m. **Anglican/Uniting**

Our mission is to be a welcoming, sharing Christian community

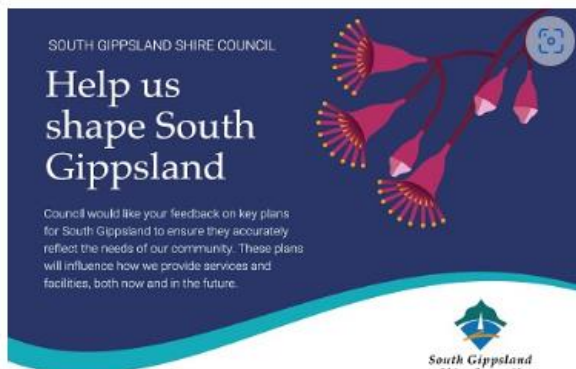
Coming up:

- * Women's discussion group (meets 8th and 22nd September)
- * Day of prayer for our community and world (17th September)
10.30-3.30 Further details from Paula: 0405 210 875
- * Samaritan's Purse Operation Christmas child boxes now available Contact Marlene: 0419 345 128

Domestic Animal Management Plan

We are currently developing a new four-year draft Domestic Animal Management Plan.

The Plan will provide Council with a strategic approach towards promotion of responsible pet ownership, providing balance to the needs of pet owners and non-pet owners in our community.



It also assists in the welfare of dogs and cats, and protection of our community and environment from nuisance dogs and cats. There are a number of ways that you can have your say:

- Make a detailed submission.
- Visit us at a community listening post.
- Register for an online workshop.

Residents that participate have the option of going into the draw to win a hamper of local produce to the value of \$200.

We encourage all community members, whether you own a pet or not, to provide input and help us understand what's important to you so we can reflect that in the draft plan. You can sign into their website to fill in the survey online.

[Domestic Animal Management Plan | Your Say South Gippsland](#)

Engagement Events

- 1 September 9.00am to 11.00am - Foster
Foster alleyway next to FoodWorks (weather permitting - alternate venue will be the Foster Information Centre).
- 1 September 12.00pm to 2.00pm - Mirboo North
Mirboo North & District Community Foundation, 96 Ridgway.
- 6 September 9.00am to 11.00am - Leongatha
Memorial Hall foyer, 6-8 McCartin Street.
- 6 September 12.00pm to 2.00pm - Korumburra
Korumburra Meeting Room, 136 Commercial Street.
- 8 September 7.00pm to 8.00pm - Online
Online workshop. To register, [click here](#).

Interested in learning more about your family history?



If the answer is **YES**, you are invited to join your local family history group, the "South Gippsland Genealogical Society"

The family history group shares with the Historical Society at 10 McCartin Street, Leongatha in the historic Mechanics Institute.

Meetings are held monthly on the 3rd Monday of the month at 1.30 p.m.

A wide range of resources are available for research including Passenger Indexes, Pioneer Indexes, and local cemeteries.

Browse through our comprehensive library where the focus is on South Gippsland and surrounding areas.

Everyone is most welcome to either visit the rooms or to attend a meeting prior to becoming a member. Annual subscription is: \$35

For more information contact: Fay Boag (President) or Heather Stone (Secretary) via email.

sggs3953@gmail.com



BUCKLEY PARK COMMUNITY FARM

COMPOST TEA

The Community Composter at Fish Creek is making Compost Teas to help get all the microbes into the soil. This initiative is being developed by Buckley Park Community Farm and Composter. Community supporting Community growing food to feed a Community.

If you would like to be involved in this project or need some Compost Tea please contact Marg Watson 0488592725



SAVE THE SUMMER DATES, GROW YOUR SUMMER VEGGIES



Love growing fruit and veggies? Fish Creek Summer local produce markets starting on the 7th Jan 2023 and going to 25th March 2023 will be operating to help you. Every Saturday between 8am and 10am so that it does not eat into the rest of the day.

With lots of visitors to our area, it will be a great way to showcase what can be grown locally and how much better it tastes. We would love it if you extend that veggie plot so that you have extra to sell, buy or swap. The markets will be located on the old tennis court.

BABY BONANZA

Saturday
17th
September
10.00 - 2.00

Quality baby items are taking over the building. Special prices on all our market tables which will be full of clothes, toys, blankets, accessories and more.



LADIES FISHING DATES

VENUS BAY
COMMUNITY CENTRE

Doyles Beach September 27th - 1.30

Fisherman's Jetty - October 7th - 10.30

All welcome. Phone the Community Centre for more information.





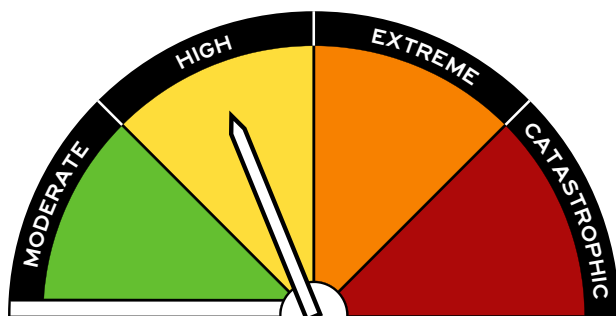
Introducing the new Australian Fire Danger Rating System



Fire danger ratings describe the potential level of danger should a bushfire start. They are important because they provide people with information so that they can take action to protect themselves and others from the potentially dangerous impacts of bushfires.

From September 1, Australians will have a simplified, action-oriented Fire Danger Rating System.

The new Australian Fire Danger Ratings (AFDRS) levels are:



MODERATE

Plan and prepare

HIGH

Be ready to act

EXTREME

Take action now to protect life and property

CATASTROPHIC

For your survival, leave bushfire risk areas

- The AFDRS will also introduce 'off' for those days where no proactive action is required by the community. On these days, you will still need to abide by local seasonal laws and regulations, but there is little or no risk of a fire that starts spreading in a dangerous or life-threatening way.
- The AFDRS is informed by one of Australia's largest social research projects which found that most Australians do not understand the current system, and would prefer a simpler, action-oriented set of fire danger ratings.
- The AFDRS is being implemented consistently across Australia and will mean that wherever you are across the country, you will be able to understand the threat posed on any given day and make appropriate decisions to keep you and your family safe.



CHANGING THE SCIENCE:

- The current Fire Danger Rating System is largely based on science that is more than 60 years old. New technology and research have greatly improved our ability to accurately predict fire behaviour and the potential threat to the community.
- The AFDRS uses the latest scientific understanding about weather, fuel and how fire behaves in different types of vegetation to improve the reliability of fire danger forecasts. This strengthens the ability of those working in emergency services to be better prepared, make improved decisions, and provide better advice to the community.
- The new fire danger rating system is designed to be continuously updatable so that the system can take advantage of improving science, data and information into the future.
- By better understanding fuel types and fire behaviour on any given day of fire risk, agencies will be in a stronger position to respond to fires, adopting specific firefighting suppression strategies.



BENEFITS:

The Australian Fire Danger Rating System (AFDRS) Program is redesigning the forecasting of fire by:

- Improving the scientific accuracy behind fire danger predictions.
- Providing government and industry with better decision-making tools.
- Improving the way that fire danger is communicated.
- Reducing the costs associated with bushfire impacts.

The key benefit is a more prepared and resilient community resulting in a reduction in loss of life, property, and human harm.

The AFDRS calculates fire danger at a finer geographic scale than ever before so more relevant and specific information can be provided.

Significant cost savings are expected due to improved fire danger information leading to better decisions and more appropriate and timely action. It will also improve cross-border operations and support sharing of firefighting resources.

This is a national program funded by the Commonwealth and all the States and Territories and delivered by local implementation teams. The AFDRS is being coordinated by NSW RFS and AFAC (the National Council for Fire and Emergency Services), with support from the Bureau of Meteorology.

A National Program Board, with representation from each of the State and Territories' fire agencies, is overseeing the program.

BUSINESS NEWS STATE & REGIONAL INFO

The Victorian Government has launched the new \$5 million **Small Business Specialist Advice Pathways Program** for Victorian small business owners to access financial and legal advice from trusted professionals. Eligible small businesses can receive a \$2,000 grant to cover the costs of engaging a qualified service provider that can help with financial and legal advice.

The program supports businesses that have adapted, pivoted or changed their core business activities in response to disruptive change caused by COVID-19 and other factors by improving their capability and preparedness to plan for their future.

Grants will be offered on a first come, first served basis until Friday 30 September 2022, or when funds are exhausted.

[Apply now](#)

Have your say as a regional business in Victoria

If you are a business owner in regional Victoria, the Victorian Government wants your feedback to better understand the economic environment in your local communities.

If this applies to you, complete the survey to have your say.

[Have your say](#)



The Shop Local ~ Eat Local campaign aims to encourage local people to support local businesses through positive (and fun) messaging. The campaign commenced last year with advertising, posters, shop local decals and calico bags and is supported by the Victorian Government's Outdoor Activation Program.

This year we are expanding the messaging through the distribution of:

- **Calico Shop Local bags for distribution through local retailers (with a shop front)**
- **Compostable Eat Local cups for use by local cafes and restaurants**

Additionally, there will also be advertising to encourage residents to shop and eat local. This will include newspaper advertising, social media and video. We hope that consistent messaging - in a variety of formats - will resonate with people and encourage them to spend in their local townships which will keep money circulating in South Gippsland.

Please read on for information on the campaign.



Coffee Cups Eat Local compostable coffee cups are available for use by South Gippsland cafes/restaurants. If you would like an allocation of compostable cups and lids to use in your cafe/restaurant business, please [CLICK HERE](#). We will then be in touch to arrange delivery or collection. We will also endeavour to call in to as many businesses as we can to see if you would like to participate. Stocks are limited.

Calico bags Shop Local calico bags (shown right) are available for distribution within the South Gippsland community. The bags are free for customers. Our hope is

that South Gippsland residents will use the bags when they shop in town - helping to keep the messaging going and serving as a regular reminder of the importance of shopping local.

If you would like some bags to distribute through your South Gippsland retail business (with a shop front), please [CLICK HERE](#). We will then arrange collection or delivery. Stocks are limited. Customers can also pick up a bag from Council reception in Leongatha (Mon - Fri between 9.00am - 4.00pm)





Do you have a few hours to spare?

We are always looking for volunteers to help out at the community centre...do you have any particular skills you can contribute? Or perhaps you have a bit of time to spend helping with filing in the office or sorting donations for the Recycling enterprise?

Every bit counts and every bit is appreciated. We could not function without our fabulous team of volunteers.

So why not come and join in!

Situated at 27 Canterbury Road, Venus Bay.

Phone: 5663 7499, Send mail to Post Office Box 786, Venus Bay 3956

Email: info@vbcc.org.au Website: www.vbcc.org.au

Opening hours reflect the season - please check our website or Facebook for details

or call Alyson 0416 242 331

Venus Bay Community Centre is supported by:

Department of Health & Human Services (Victoria) and the Commonwealth Government, South Gippsland Shire Council.

Our website is www.vbcc.org.au

Find current and back issues of Matter Of Fact on our website. Please contact us if you wish to be on our email distribution list.

