

# MATTER OF FACT

a free community newsletter published by  
Venus Bay Community Centre

January 2023 Vol 2 Issue 14



*Image by: The Wright Shot*

Providing information for  
Venus Bay, Tarwin Lower  
and Walkerville district

**VENUS BAY**  
COMMUNITY CENTRE

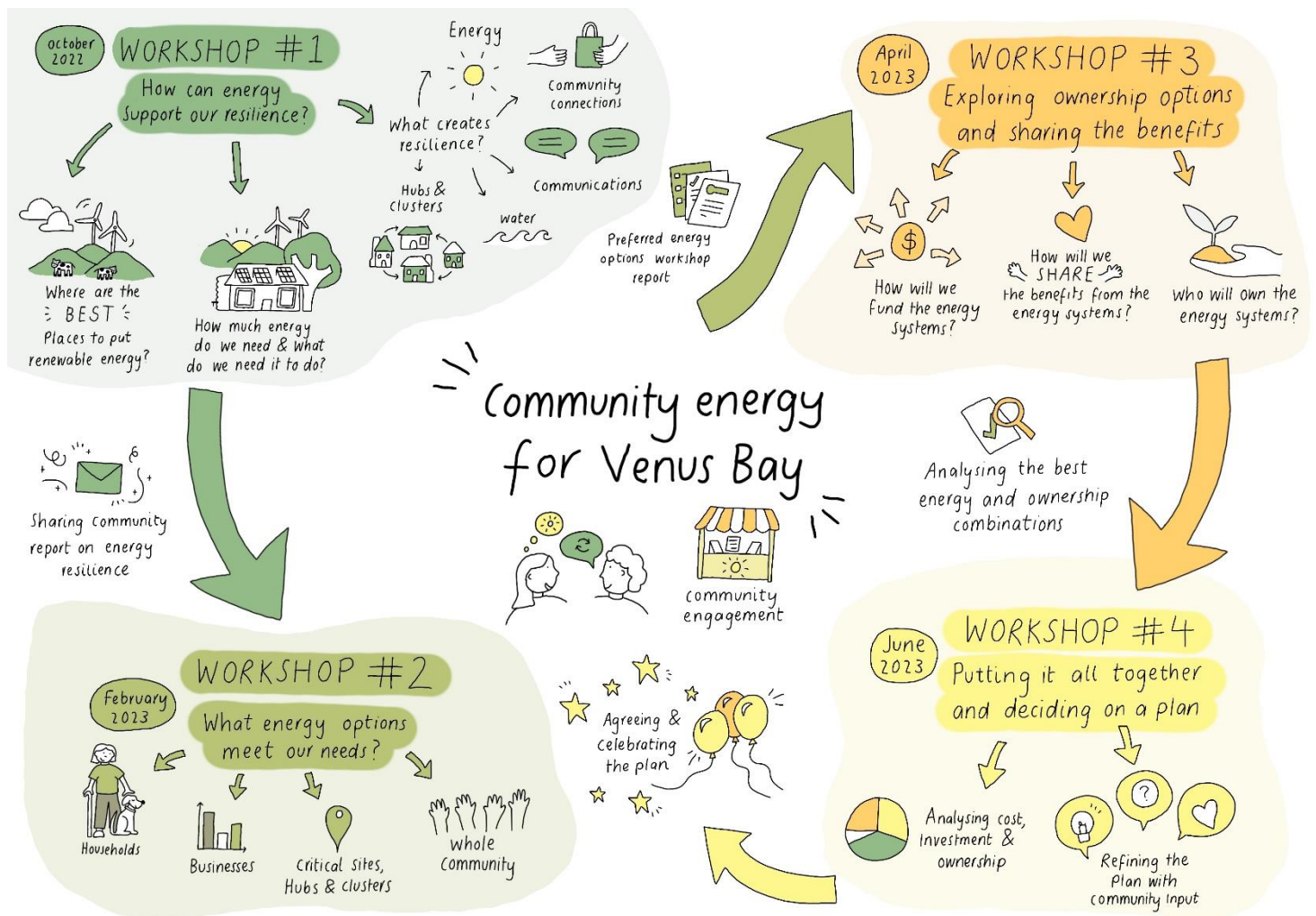
We acknowledge the Traditional Owners of Country throughout Australia and recognise their continuing connection to land, waters and culture.

We pay our respects to their Elders past, present and emerging.

# COMMUNITY ENERGY PROJECT UPDATE

There's lots to report on our Community Energy Feasibility Study for Venus Bay & District Project. For those new to the news – we were lucky to receive some funding from the Federal Government last year to undertake a serious and comprehensive study relating to community energy for our district. With a burning desire to address the failures of outdated and aging energy infrastructure and small communities wanting to define their own renewable energy future, the Venus Bay Community Centre has started a Community Resilience and Reliable Energy Study – and we're part of something big - a groundswell of community energy projects across Gippsland. From Mallacoota to Philip Island, Heyfield to Sandy Point, Venus Bay's community energy project is part of a bigger story of small communities working together, championing community asset ownership with shared benefits.

Here's an overview of where we are heading: (we are at Workshop #2 now)



So far we've hosted a Community Workshop in October – looking at what resilience means to our community – what happens when the power goes out, what are the most important things to our community members – essential, enough + everything; and we started mapping how we are connected – both socially, organisationally and in terms of energy infrastructure. We've engaged with the community in lots of ways – providing updates/bulletins, sent out information (did you get a brochure in the mail?), hosted workshops with business and pop up engagements at Tarwin Markets, and of course we've done lots of talking and listening!

We've also sent out a short film teaser of the project – have you've seen it? If not, link here for you:

<https://player.vimeo.com/video/784064498?h=7b7618e7e5> (PS – time for workshop is now 12-3pm)



We are now heading for **Workshop #2** on **Saturday 11 February**, where we will consider what **Energy Options** might suit our needs, based on the technical information we have and considering how we might be able to prioritise and decide as a community on what will work – taking into account perspectives of individuals, business, community groups and whole of district.

There'll be information about some of the different renewable energy options, and we'll spend time unpacking & understanding these. We'll also start to explore ownership options and community wealth building – how a project like this can empower self-determination and harness local

prosperity, based on the business case we will develop for the project.

The project team have been continuing to work on the technical side of things. Liaising with AUSNET and other regulatory bodies, we are working on capturing an accurate picture of the energy usage in our towns – this has not been without it's challenges!

In our conversations and engagement to date, we also recognise the importance of **communications** to resilience – as we rely on Internet and phone connections to not only access emergency information, but to connect with each other, especially during power outages. We've also had meetings with NBN and Telstra, along with new State Govt department DEECA (Department of Environment, Energy and Climate Action) – there continues to be a lot going on behind the scenes as we continue to build relationships with other stakeholders and learn more about & engage with our community. There's lots of updates for our upcoming workshop!



While the project was designed primarily in response to issues faced in Venus Bay (end of line infrastructure, one road in & out, high fire danger, dependence on pumps for water etc.) our project team recognises that **Tarwin Lower and Venus Bay are interconnected** – each provides services and people to the other. Based on some of the feedback we've received, we are offering to host an additional workshop to cater particularly to the Tarwin Clubs. One reason for this is this area has been identified in our first workshop as being an important cluster of buildings/organisations to the

district. In addition, some of the distribution mapping reveals these buildings are a cluster on the same network which includes Football/Netball Club, Bowls Club, Health Centre and Primary School.

This is scheduled for **THURSDAY EVENING 9<sup>TH</sup> FEBRUARY FROM 5.30-7.30PM at the Tarwin Lower Bowls Club**

The main workshop will be held on **SATURDAY 11 FEBRUARY FROM 12 NOON TO 3PM AT THE VENUS BAY COMMUNITY CENTRE – PLEASE JOIN US FROM 12 NOON TO 3PM.**

We really hope as many of our community members, businesses, organisations and householders can come along to the workshop to help build a community led picture of what energy options might work for our district. Invite your friends, your neighbours, members of your club and spread to your networks – the more voices we have, the stronger the project plan will be to address what OUR community wants and needs.





# JOIN US



Community Energy Resilience and Reliability Feasibility Study at Venus Bay

## Energy Options

This workshop will explore the different types of renewable energy options that could best suit our community, and where these could be located based on community input.

*This project depends on community input and engagement.*



This is a **FREE COMMUNITY EVENT**.  
Your registration will help us with catering.  
To register, scan the QR code or head to  
[vbcc.org.au/communityenergy](http://vbcc.org.au/communityenergy)

**VENUS BAY  
COMMUNITY CENTRE**

27 Canterbury Rd Venus Bay





**COVID SAFE EVENT**

# **VENUS BAY**

**DO YOU KNOW YOUR**

**FIRE RISK?**

## **FIRE SAFETY MEETING**

**Come down for a chat with local fire fighters about fire preparedness, planning and fire safety.**

**CFA will be there to help answer your questions about how to be best prepared for fire.**

**Where:**

**Jupiter Park, Jupiter Boulevard,  
Venus Bay.**

**When:**

**10:30am - Sunday 12 February 2023**

**Bushfires happen every year. Spend time now and learn how you can keep you, your family and your friends safe from fire this season.**

- Could a fire reach my property?
- What if the road is closed?
- Will someone knock on my door to tell me to leave?
- What about the kids?
- What about my pets?

**For more information, contact:**

**Venus Bay Captain - Michael Moore**

**0437 525 935**

## Fire Danger Period Declared

The Fire Danger Period will begin at 1.00am on Monday 16<sup>th</sup> January across the **South Gippsland** municipality.

**Captain Michael Moore of Tarwin Lower & District Fire Brigade** said “vegetation has dried out considerably over the last few weeks and early indicators were pointing to a long and challenging fire season ahead”.

“It’s still not too late to clean up your property if you haven’t already done so, but the window for burning off has closed,” **Michael** said.

“Residents should take up the green waste collection service if offered by their local councils when preparing their properties through clearing, mowing or slashing,” **he** said.

During the Fire Danger Period, all fires in the open air are banned without a permit, along with most activities with the potential to generate sparks, and **Captain Moore** emphasised that CFA will be taking a zero tolerance approach to any fires resulting from people flouting the laws.

“Expect that any fire you start to be fully investigated by police,” **he** said.

“While CFA does everything it can, we look to the community to use common sense and take responsibility for preventing fires,” he said.

**Captain Moore** said that residents could find information about what is and isn’t permitted during the Fire Danger Period by visiting **[cfa.vic.gov.au/warnings-restrictions/can](https://cfa.vic.gov.au/warnings-restrictions/can)** or by calling **1800 226 226**.

During the Fire Danger Period (FDP) fires cannot be lit in the open air without a written permit from CFA or a Municipal Fire Prevention Officer. The FDP is based on local conditions and takes into account fuel moisture, fuel loads, grassland curing, weather and rainfall.

### Fire Danger Period information:

- A written permit is required to burn off grass, undergrowth, weeds or other vegetation during the FDP. This permit may be issued by the Municipal Fire Prevention Officer or the CFA District Office. Please check with your municipality in the first instance.
- Lighting a fire in the open without a permit is an offence and can bring a penalty of over \$17,000 and/or 12 months imprisonment. Barbeques and fires for cooking and warmth do not require a permit, but **must** be lit in properly constructed fireplaces (to view complete conditions visit [cfa.vic.gov.au/can](https://cfa.vic.gov.au/can))
- Use of incinerators, chainsaw/lawn mowers, welding/grinding equipment and vehicles that come in contact with vegetation and machinery with an internal combustion/heat engine is permitted provided [conditions are followed](https://cfa.vic.gov.au/can).
- Farmers can find legal guidelines and practical advice at [cfa.vic.gov.au/farming](https://cfa.vic.gov.au/farming) – important especially for new farmers, bush block owners or hobby farmers.
- A [Total Fire Ban declaration](https://cfa.vic.gov.au/can) means no fires can be lit for the declared district for that day unless there is a specific exemption or special permit issued. This applies irrespective of the Fire Restriction status for a given municipality. Further details at [cfa.vic.gov.au/can](https://cfa.vic.gov.au/can)

For more information contact CFA Media on:  
03 5330 3124 (24 hours) or [cfamedia@cfa.vic.gov.au](mailto:cfamedia@cfa.vic.gov.au)



**[cfa.vic.gov.au](https://cfa.vic.gov.au)**

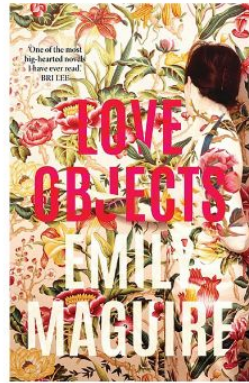


**Silver Banksia Plant  
group  
Mondays 10.00 - 12.00  
LOCAL PLANTS  
for SALE**



---

**Book Club  
2nd Tuesday  
of the Month  
5.00 - 6.30**



**Current  
book**

---

**FREE Community  
Lunch  
Wednesdays  
12.00**



**Sewing  
mornings  
every  
wednesday**  
BYO Project or help  
with upcycling  
projects



---

**Play group  
Thursdays  
9.30 - 11.00**





NEW BICYCLES  
AVAILABLE TO  
HIRE \$20 PER  
DAY

---



Trailers for public  
use within the  
local area only.  
These do not  
require booking.

---



WE WANT YOUR  
COMPOST!

FREE Compost  
buckets can be  
collected from  
the Centre.



# Tarwin Lower Union Church



**Our  
mission is to be a  
welcoming, sharing  
Christian community**

## Regular services:

**Saturday 5.30 p.m.**

**Catholic**

*Liturgy/Communion on the Saturday before the  
1<sup>st</sup>, 3<sup>rd</sup>, 4<sup>th</sup> and 5<sup>th</sup> Sunday of the month*

**Saturday 6.30 p.m.**

*Mass on the Saturday before the 2<sup>nd</sup> Sunday of  
the month*

**Sunday 10.30 a.m.**

**Anglican/Uniting**

## Alert!!

If you would like to attend the 10.30 a.m. Sunday service at  
Tarwin Lower Union Church, and need help with transport,  
please contact Marlene 0419 345 128

## Coming up:

- \* Women's discussion group: 2<sup>nd</sup> and 16<sup>th</sup> February (See poster for details)
- \* Pancake day (Shrove Tuesday): 21 February (See poster for details)
- \* KYB (Bible study) commencing Friday 10<sup>th</sup> February at 5 p.m.

## VENUS BAY ANGLING CLUB

The VBAC will be holding the next fishing competition starting at 12 noon on Friday 3<sup>rd</sup> February and finishing at 3.00 p.m. Sunday 5<sup>th</sup> Feb. There will be a weigh in each day between 4-6 p.m. Friday, 4-8 p.m. Saturday and 2.30 - 3.00 p.m. Sunday when the winners will be announced. 1<sup>st</sup> prize for members is a voucher from a local business. The BBQ will be held on Saturday night, as usual from 6.00 p.m. Meat is provided and we ask everyone to bring along a salad/dessert to share.

Non members are most welcome to enter the competition, there is a \$5.00 entry fee that includes the BBQ Saturday night at the Club, when we run a raffle and a members draw each month. If you want to find out more about the club we are

open Friday and Saturday evenings 4.00-6.00 p.m. or go to our Facebook page - Venus Bay Fishing & Reports.

Membership is \$30.00 per year per family which gives you free entry to the competition each month. We also have a Christmas dinner in December and social functions throughout the year. New members are most welcome.

Some of our members and their latest catch.



## COUNCILLOR UPDATE

Dear Community,

Lots going on this summer in our little towns! I'm going back on a few things that happened in December Jan as I know there is confusion and concern over headlines.

### SEPTIC/SEWERAGE RUMOURS

- In the December Council meeting there was a motion to support South Gippsland Shire Council partnering with South Gippsland Water to advocate for a septic/waste water solution for our business strip and community service buildings to cater for our seasonal numbers.
- There was also a motion to support advocacy to the state govt for sewerage the whole town alongside of the more urgent public use sites.
- In recognition of the costly modern systems new builds are putting in and the lack of consultation thus far with current community I put forward an alternate motion **that this advocacy only occur if:**
  - **the business district solution was successful**
  - **after community consultation the community decide they want it.**
- To be clear; the likelihood of there being state government appetite to sewer the whole town is low, its only if we advocate hard that these things will things go on the table. So please stop panicking, we're just applying a bit of common sense to the ageing and restrictive infrastructure of Venus Bay and looking at the priorities. As we've seen this summer, the toilets are becoming a growth issue.
- At the moment our hospitality numbers are restricted due to overall wastewater constraints. We have 700 undeveloped blocks, that's a whole lot more visitation in our boom periods and visitation equals stress on public use septic/wastewater systems.

If you would like to read the study findings and suggestions please go to: [Agendas and minutes | South Gippsland Shire Council](#)

### SKATE PARK AND STREET UPGRADE

Given we are thinking about the future I'd like to point your thoughts now to the Skate Park and Street Upgrade.

Pre-Covid and the administration period, plans were made in conjunction with community for a Venus Bay skate park and street/ path upgrade from Jupiter Park to the beach 1 footpath. Finally, the Skate Park went to tender in December and is commencing build in Feb.

The Street upgrade is going to tender now for commencement midyear which brings me to the design. What is going to tender is the design done after community consultation previously. You can find it here: [Venus Bay | South Gippsland Shire Council](#). Although years have passed I'm sure we'd all agree that we don't want to hold this project up for a new consultation however I have asked for a review of the design to look at how we might build in more outdoor seating, communal areas for peak seasons.



It is clear to me that the community loves the outdoor al fresco buzzing summer vibes of a more pedestrian and hospitality friendly town centre. This is where the idea of treating our Boom and Bust town like a festival town keeps pinging me 😊

The work happening mid-year will make sure we have an all access path from Jupiter Park to Beach 1 as well as giving the business strip a tidy up and face lift. It won't increase the capacity of our traders and thus their ability

to claim more space, that's where the septic and wastewater upgrade comes in and that's where we need to work toward permanent solutions to our restrictions.



## COASTAL STRATEGY

Moving on from pools and car parks to our coastal strategy – what do we need to support our local economy and community in the long term.

Council's Coastal Strategy Discussion and engagement is the result of a lot of feedback from residents and landowners worried about the future of our coastal townships along with a big push by Federal and State govt to address our growing coastal hazards risks.

The Coastal Strategy currently extended for community feedback until Feb is seeking to address our future environmental, social and infrastructure challenges. Organic growth isn't cutting it and we have a number of things on our planning schemes, land and visitor management that need review in order to protect the future of our stunning coastline.

When I ran for council I heard loud and clear that most wanted our coastal communities protected from overdevelopment, to properly look after our environmental assets and maintain the individual character of our towns.

At the moment we have 700 undeveloped blocks of land, a commercial sector restricted by wastewater and septic set up and emergency services stretched to the limit in supporting our boom and bust tourism.

The Coastal Strategy Community Engagement is your chance to shape change and growth – what change is already here? What can we support from an economic, social and emergency services perspective? What can we support from an environmental perspective? What about on flood plains, inundation mapping? How does all of this fit in with National conversations about communities living in end of line and vulnerable communities?

We are starting with asking for your feedback and ideas on things like;

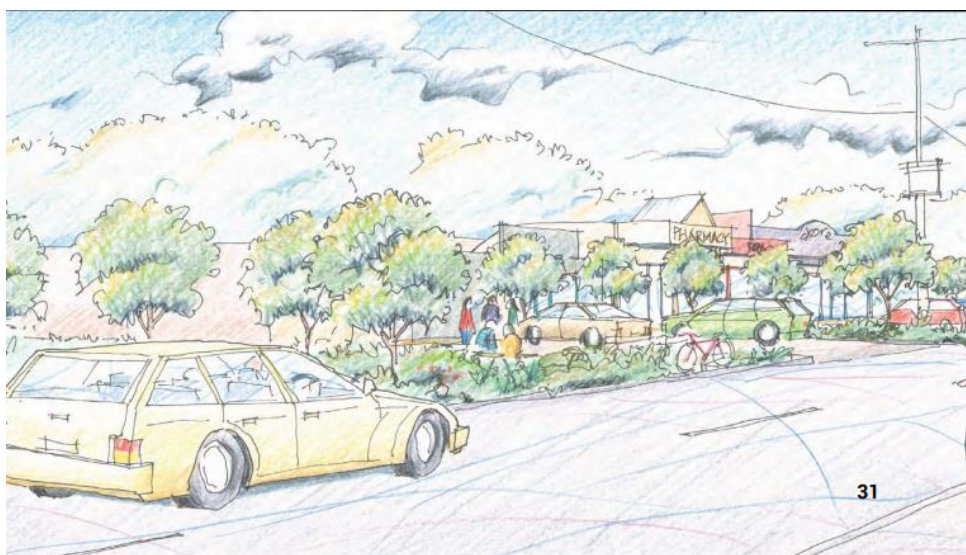
- Should we keep or remove the greenfield growth areas from our planning scheme? These are areas set aside for future growth in the south east end of Venus Bay, in Sandy Point and Waratah Bay.
- What things are important to our towns character and what actions should council take to protect that? Vegetation removal and replacement, house to block ratios, subdivision and multiple dwelling laws etc.
- Considering the coastal hazard mapping (appendix 2) what built and natural infrastructure should we prioritise for the short- and long-term future?

PLEASE at least do the quick 5-minute survey at this point in the Coastal Strategy.

[South Gippsland Coastal Strategy | Your Say South Gippsland](#)

Congrats to all on keeping our tourism safe for another year.

Cheers Cr Sarah Gilligan



# THEN AND NOW

## Venus Bay, Tarwin Lower Strategy Plan 1992!

This 30-year-old document was brought into the Centre last week – an amazing and informative slice of our history. The 80 yellowing pages reflect the development of a Strategy Plan for our townships – with extensive community consultation, shire representation and committees formed to address the issues of the time. The Shire at the time was Woorayl Shire, which I think (?) then encompassed Inverloch. Despite the changed boundaries and renaming to South Gippsland Shire it is interesting to note that all the issues identified were almost exactly the same as those we face now, 30 years on.

Ideas of leaving Venus Bay as a residential area, while supporting commercial business precinct in Tarwin Lower are much the same – we know Venus Bay has all the people, and Tarwin Lower has most of the services/businesses. Questions about septic and reticulated water, development that is consistent with the landscape and appropriate to the area, transport, services are all referred to in the draft plan – along with what to do with camping along the Tarwin River.

The Environment features strongly – the river, the beaches, the inlet, our native flora and fauna – there were real concerns then, as now on the impact of increased housing development on the fragile coastal landscape we share.

### 1. FOREWORD

#### A vision for the future.

In formulating the following recommendation, the Built Environment Committee has attempted to avoid "band aid" solutions by maintaining throughout an overall vision for the future of the Tarwin Lower/Venus Bay area.

This is a vision shared by a major sector of the local community. Through Strategy Plan survey results, the responses and reactions to a number of well attended public meetings and the general interaction by committee members with the locals (part time and full time), it is obvious that the vast majority of interested people value highly the inherent quality of the local environment, and the lifestyles it facilitates.

Take a look at the whole document  
on our website here:

[www.vbcc.org.au/community](http://www.vbcc.org.au/community)

The four study areas were advertised in the local newspaper March of 1991 and listed the following areas as being relevant

#### 1. Natural Environment

- Foreshore: what is its role and how should it be managed?
- Tarwin River: what is its role and how should it be managed?
- Protection and development of flora and fauna.
- Are present vegetation controls adequate.
- How best can recycling be developed.

#### 2. Built Environment

- How should Venus Bay and Tarwin Lower be developed?
- Where should commercial developments be located?
- What types of commercial development are necessary for Venus Bay and Tarwin Lower?
- Are height, colour and material controls necessary?
- What is the future of private streets in Venus Bay and Tarwin Lower?
- What types of effluent disposal systems are appropriate for the development of Venus Bay and Tarwin Lower?
- How should the existing commercial areas be developed?

#### 3. People Services

- Are existing community services adequate for both existing and future populations of Venus Bay and Tarwin Lower?
- How can the community become more involved in the planning and management of services?
- How can the existing parks and gardens be improved?

#### 4. Economy

- How should the shopping centre look?
- Can more employment opportunities be created?
- Should tourism be encouraged?
- How can the area be promoted?

In the adoption of the recommendations which follow, the Council will need to dispense with the usual notions of municipal growth and progress. We envisage a coastal retreat unique on the Victorian coast and to achieve this, our Council will need to agree that for this area restrained development and restricted growth is progressive and within their power.

#### BUILT ENVIRONMENT COMMITTEE

1.	FOREWORD .....	Page 6
2.	COMMERCIAL DEVELOPMENT – TARWIN LOWER .....	Page 7
3.	MAIN STREET BEAUTIFICATION PROGRAM – TARWIN LOWER AND VENUS BAY .....	Page 8
4.	BUSINESS FEASIBILITY PLAN – TARWIN LOWER AND VENUS BAY .....	Page 8
5.	COMMERCIAL DEVELOPMENT – VENUS BAY .....	Page 9
7.	RESIDENTIAL DEVELOPMENT – VENUS BAY .....	Page 10
8.	RESIDENTIAL BUILDING CONTROLS .....	Page 10
9.	ROADS – VENUS BAY .....	Page 11
10.	TRAFFIC CONTROL – VENUS BAY AND TARWIN LOWER ....	Page 12
11.	SEPTIC TANK SYSTEMS .....	Page 12
12.	WATER SUPPLY – VENUS BAY .....	Page 13
13.	FIRE STRATEGY PLAN .....	Page 14
14.	RECREATIONAL ENVIRONMENT .....	Page 14
	14.1 SHIRE RESERVES, OPEN SPACES AND PARKS .....	Page 14
	14.2 CYCLING AND WALKING TRACKS .....	Page 14
	14.3 TRACK BIKES AND OFF ROAD 4WD .....	Page 15
15.	HALL/COMMUNITY CENTRE .....	Page 15



## AND THAT'S A WRAP – A BUSY SUMMER FOR VENUS BAY

After 2 years of COVID restrictions, it was great to see so many people back enjoying our wonderful coastal area. There were LOTS of activities and happenings over summer – with mostly magnificent weather.

A MASSIVE shout out and THANK YOU to all our amazing volunteers who helped with events and programs, and most importantly keeping us safe – particularly our CFA crew, Community Emergency Response Team CERT and our Venus Bay Surf Life Saving Club volunteers. All these volunteers step up over the season – and beyond – to attend incidents and help to save lives.



The Venus Bay Community Centre ran the Free Summer Beach Shuttle Bus for the first time in 2 years – we wondered if it would be supported again, and were pleased to receive overwhelming thanks and support for the service. While this costs the Community Centre about \$1,000 to run, plus over \$2,400 in-kind volunteer support, it seems the service is still popular, and while the numbers were down from previous years, we still transported nearly 800 people to Beach 1 over the 13 days of service – many thanks to our wonderful volunteer drivers!



We also hosted a fantastic holiday program of activities at the Centre – led by the wonderful Jorja who created a range of fun, creative (and messy) activities for children and families.



And finally a huge shout out to our Venus Bay Community Centre volunteers who put in extra effort and time to help with our Community Recycling Enterprise over summer – the place was heaving with extended trading hours to 6 days a week – our volunteers graciously sifted and sorted pre-loved donated treasures and welcomed community members and visitors with a smile – THANK YOU!





# COMMUNITY SINGING

AFTER A SUCCESSFUL HOLIDAY SEASON OF SINGING, WE WILL BE CONTINUING ON A MONTHLY BASIS THROUGH TO EASTER

**COMMUNITY SINGING  
EVERY 2ND MONDAY OF  
THE MONTH**

**7.00 - 8.15**

**\$10 PER SESSION**

**FEBRUARY 13TH**

**MARCH 13TH**

**APRIL 10TH**





# Tarwin Lower Mechanics Institute Memorial Hall –

## *What's the buzz?*

Happy New Year everyone!

**Tracie B. Mitchell and her Yoga** classes have been well attended over the summer break with regular morning sessions. Please check her FB page [Twirling Sheila](#) for up to date class times or click through to our website for more information [www.tarwinlowerhall.com/whatson](http://www.tarwinlowerhall.com/whatson) Bookings are essential - Please call or text Tracie to secure your place on the mat 0421 300 407.



**The Tarwin Lower Film Society** next screening on **Friday 17 February 2023** is "Minari" (USA/Korean) Rated PG.

"Yearning to own a small patch of land and be more than a chicken sexer, the ambitious paterfamilias, Jacob Yi, relocates his Korean-American family: sceptical wife, Monica, and their children, David and Anne, from California to 1980s rural Arkansas, to start afresh and capture the elusive American Dream. However, new beginnings are always challenging, and to find out what is best for the family, let alone start a 50-acre farm to grow and sell Korean fruits and vegetables, is easier said than done. But, amid sincere promises, cultural unease, fleeting hopes, and the ever-present threat of financial disaster, Jacob is convinced that he has found their own slice of Eden in the rich, dark soil of Arkansas. Can grandma Soonja's humble but resilient Minari help the Yi family figure out their place in the world? Purchase your membership online at [Trybooking.com](http://Trybooking.com) and enjoy a wonderful night at the Hall. Get a table together or just join one and meet some new people! BYO your drinks and snacks. **Doors 7pm; Film 7:30pm.**

Click [here](#) for more info on membership for 2023 and upcoming movies.

### **Labour Day Market**

Our next Village Market will be on **Monday 13 March** offering something for everyone and remember for lovers of the sausage sizzle and tearoom offerings – we now have EFTPOS!

Well, it's been a busy summer around the Hall. I think those that attended the comedy night on the 14<sup>th</sup> of January hosted by Geraldine Hickey will agree it was just what the doctor ordered. A good laugh and some new friends made – you can't beat that! We are so thrilled to have Geraldine's support in fundraising for the Weatherboard Repair Project. More on that next month.

Last week, tickets went on sale for the **Festival of Small Halls** tour – we are proud to bring some wonderful local and international folk acts to our town. The performance is on **Saturday 18 March** at 7:00pm. Link to tickets and more info [Festival of Small Halls](#).

We welcome Christine Grant and Every Dog Behaviour & Training! Christine is holding Sunday School dog obedience classes behind the Hall in amongst the shady trees. Contact and class info [here](#).

Finally, if you are looking for a venue to host your event, AGM or community group meeting the Memorial Hall is for available for bookings now with WIFI. Enquiries to [tarwinlowerhall@gmail.com](mailto:tarwinlowerhall@gmail.com)

Cheers all! Marg de Wolff (Secretary).

## BALD HILLS WIND FARM COMMUNITY FUND GRANTS ARE OPEN

The Bald Hills Wind Farm Community Fund (BHWFCF) is inviting organisations with community projects benefiting the Tarwin Lower, Venus Bay and Walkerville districts to submit applications for its 2023 District and Small Grants.

The District Grant is a single grant valued at up to \$15,000 providing an exciting opportunity for a local organisation to develop a significant project to benefit the district community. Small grants which will be awarded up to the amount of \$2,000 per project, are designed to enable organisations to provide a benefit or service to the local community.

Previous grants have funded upgrades to infrastructure at the Tarwin Recreation Reserve, Mechanics Hall, Men's Shed, Tarwin Lower Pony Club and Venus Bay Community Centre; mobility equipment for the Tarwin Lower & District Community Health Centre, Medical equipment for Venus Bay & District Community Emergency Response Team and Tarwin Lower Mechanics Institute Hall, IT resources and infrastructure improvements for Tarwin Lower Primary School, arts projects such as the Venus Bay Water Mural project and the Thirsty Works Gsly, and assistance to the Tarwin Wildlife Shelter, Watch for Wildlife and Community Bee Keeping.

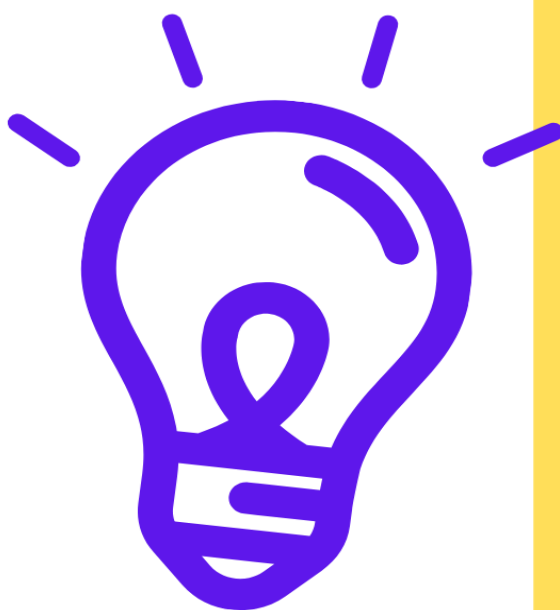
Grant applications will be available from now until the closing date of 5pm 14 April 2023.

The grant criteria and Application form are all available at <https://baldhillswindfarm.com.au/community-fund/2023-grant-process/>

Would **\$250** really  
help ease the cost  
of living right now?

We can help you  
claim the

**\$250  
POWER  
SAVING  
BONUS**



WE CAN HELP YOU  
apply for this.

Could you do with an  
extra \$250 right now?

If so you're in luck.  
The State  
Government's \$250  
Power Saving Bonus  
is available to all  
households to help  
ease the cost of  
living.

We're helping people  
apply for it.

Bring a copy of your  
electricity bill in and  
we will process for  
you.



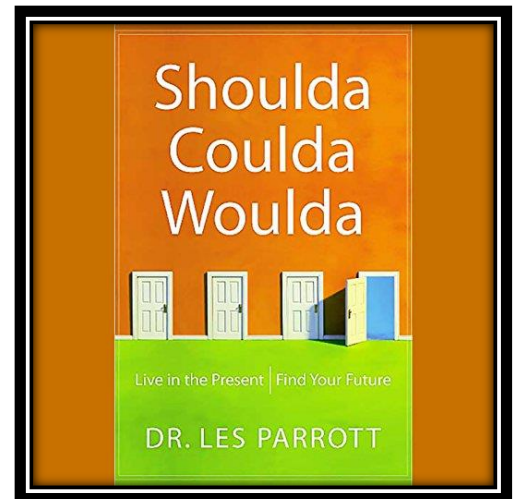
# Calling women

## of all ages and stages

Let's get together to grow, learn and change

This book, by Dr. Les Parrott, looks at topics such as:

- Choices
- Overcoming setbacks
- Boundaries
- Regret
- Living in the present



**Commencing on**  
**Thursday 2<sup>nd</sup> February**  
(and thereafter on the 1<sup>st</sup> and 3<sup>rd</sup> Thursdays of the month)  
**@ 10.30 a.m.**

**Tarwin Lower Church tea room**

**Further details from Marlene (0419 345 128)**

# Pancake Day

*(Shrove Tuesday)*

Tuesday 21 February

Come and enjoy a



# FREE



Pancake

Between 10 and 1

@

Tarwin Lower church



# **FUN RUN & WALK**



***Easter Sunday*** \_\_\_\_\_

**9th April  
2023**

***Venus Bay Beach #1***  
**9:30am briefing - 10am  
start**

**DISTANCES**

**2.2km | 6.6km | 8.2km | 10km**

**PRICES**

**Family | \$35 | Adult | \$15 Child | \$10**

*Join us for a run or walk along the fabulous beaches of Venus Bay and help to raise funds for the Venus Bay Surf Life Saving Club.*

**To book:**

**Scan QR code**



**OR**

**Go to [www.try  
booking.com/CFBCY](http://www.trybooking.com/CFBCY)**



**Proud Sponsors**

**businessary**



# Do you have a few hours to spare?

We are always looking for volunteers to help out at the community centre...do you have any particular skills you can contribute? Or perhaps you have a bit of time to spend helping with filing in the office or sorting donations for the Recycling enterprise?

Every bit counts and every bit is appreciated. We could not function without our fabulous team of volunteers.

So why not come and join in!

Situated at 27 Canterbury Road, Venus Bay.

Phone: 5663 7499, Send mail to Post Office Box 786, Venus Bay 3956

Email: [info@vbcc.org.au](mailto:info@vbcc.org.au) Website: [www.vbcc.org.au](http://www.vbcc.org.au)

Opening hours reflect the season - please check our website or Facebook for details

or call Alyson 0416 242 331

Venus Bay Community Centre is supported by:

Department of Health & Human Services (Victoria) and the Commonwealth Government, South Gippsland Shire Council.

Our website is [www.vbcc.org.au](http://www.vbcc.org.au)

Find current and back issues of Matter Of Fact on our website. Please contact us if you wish to be on our email distribution list.

