

MATTER OF FACT

a free community newsletter published by
Venus Bay Community Centre

May 2023 Vol 5 Issue 14



Providing information for
Venus Bay, Tarwin Lower
and Walkerville district

VENUS BAY
COMMUNITY CENTRE

We acknowledge the Traditional Owners of Country throughout Australia and recognise their continuing connection to land, waters and culture.

We pay our respects to their Elders past, present and emerging.

Venus Bay

Reconciliation Event

A chance to come together to recognise the past
and walk together for a harmonious future

27th May - Midday

Van Cleef Reserve

Lees Road, Venus Bay

All welcome

**BE A VOICE
FOR VOICE
GENERATIONS**

**NATIONAL
RECONCILIATION
WEEK 2023**

27 MAY — 3 JUNE

ACT TODAY FOR A RECONCILED TOMORROW

#NRW2023

NRW.RECONCILIATION.ORG.AU



Welcome to country,
Smoking ceremony,
Yarning,
with local clanswoman & speakers from Venus Bay

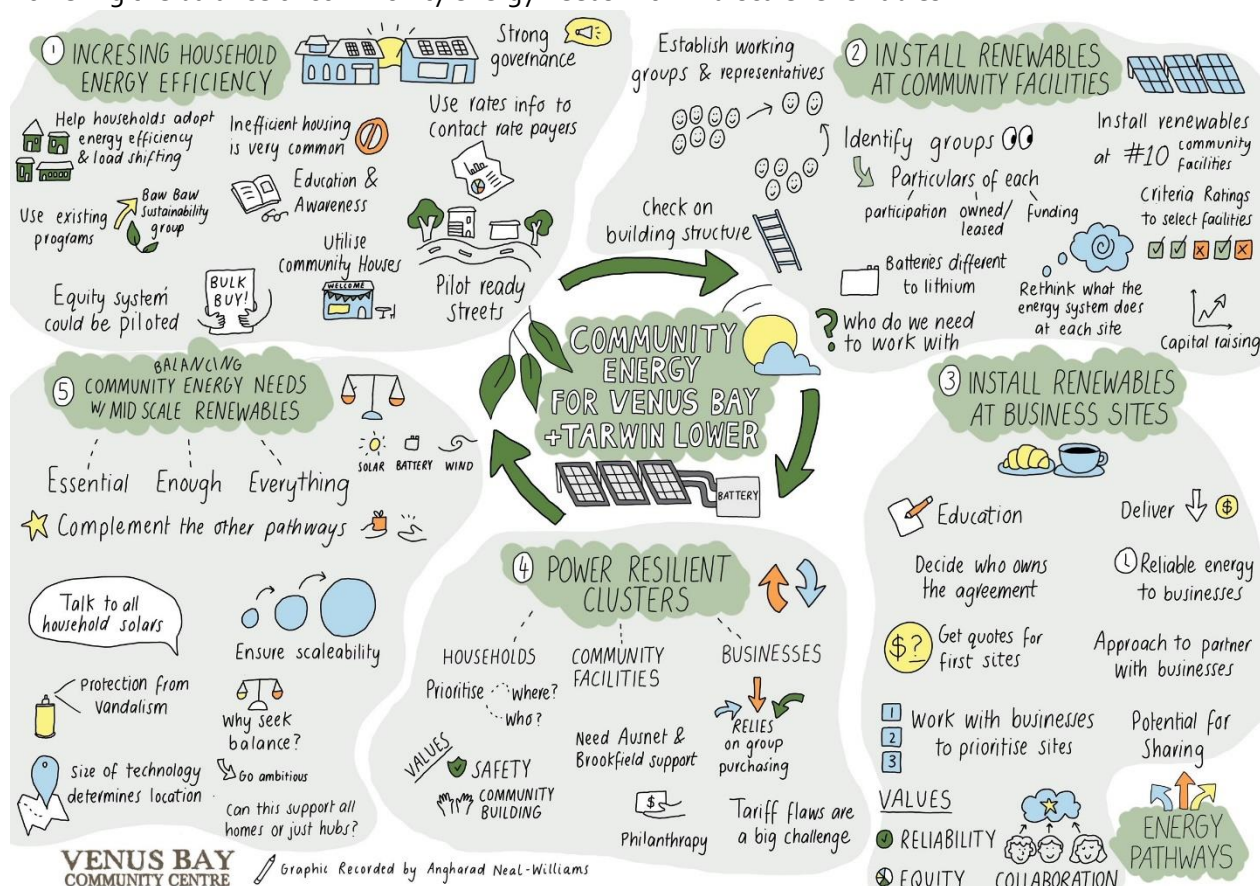
Workshop #3 for Community Energy Project for Venus Bay and Tarwin Lower saw great community attendance and engagement in April. **Exploring Energy Pathways & Locations** was the focus of the session.

As always, time was spent on an overview of what we've learned so far, and where we are in the project study. Our technical team have spent considerable time working through data to determine what our essential, enough and everything energy needs are for Venus Bay & Tarwin Lower – and investigated what kind of renewable technology systems would be suitable.

Based on community input, technical modelling and data analysis a series of energy options/pathways were considered at the workshop – offering a patchwork of small solutions that, once stitched together over time, could address our reliable renewable energy ambitions.

There was a series of 5 options presented - participants workshoped, discussed and considered elements and community values in relation to each. The map below gives an overview of the potential clusters and locations across the district – including but not limited to:

- Install renewables at community facilities.
- Increasing household solar and batteries
- Install renewables at key business sites.
- Develop approaches to power resilient clusters of households, community facilities and businesses across Tarwin Lower & Venus Bay
- Powering the balance of community energy needs with mid-scale renewables



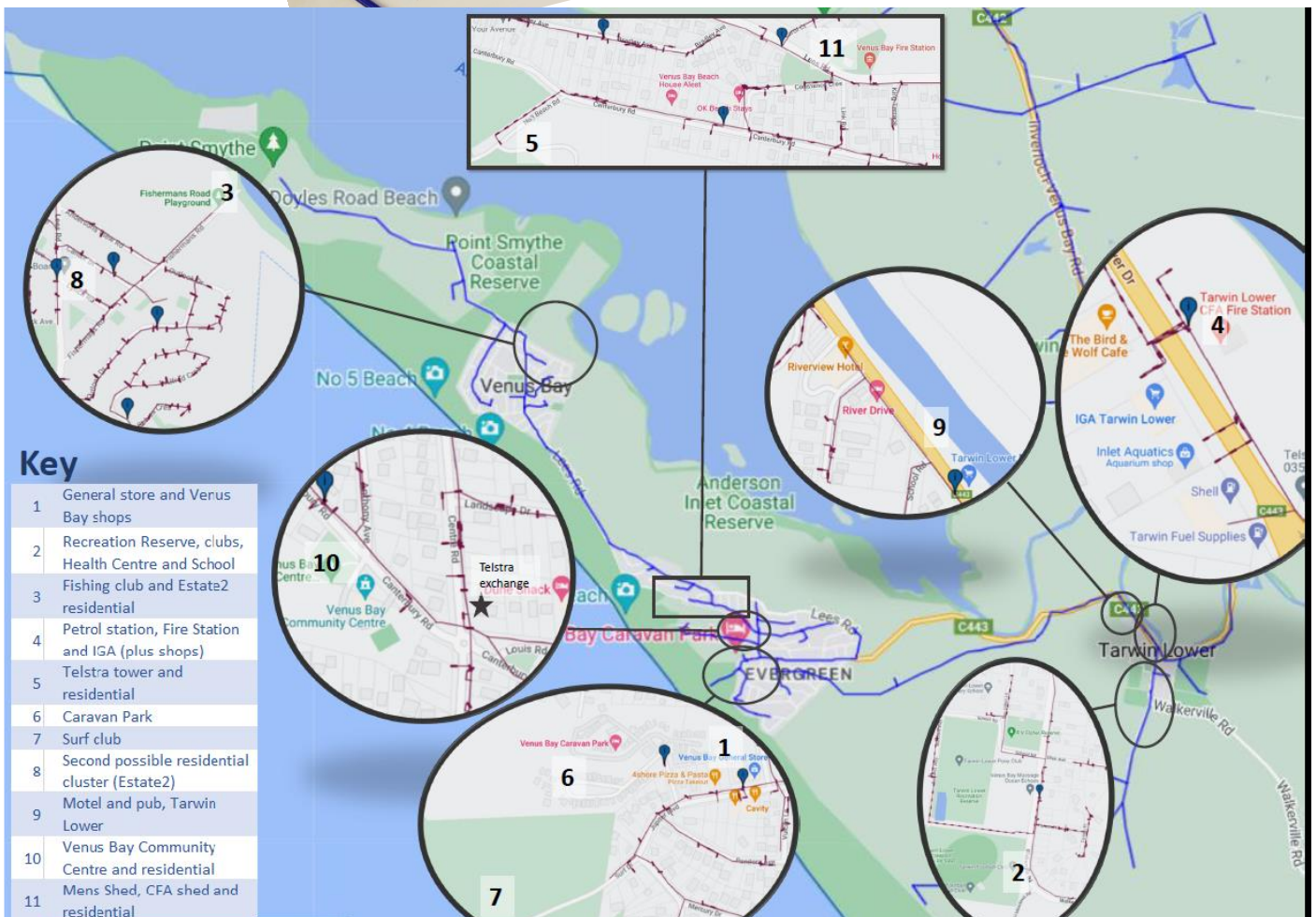
We also started to talk about **Community Wealth Building** ideas – how can community asset ownership work, how can we make sure our local communities' benefit? There was robust discussion around what kind of business structures could work, and what values would underpin these. Examples from other communities were a useful way to look at what might work for us including Yackandandah Community Development Company, Wonthaggi State Coal Mine and Pingala Co-Op – each with different structures but with Community Wealth Building principles at heart. It was great to see the values of trust, and local equity identified as core elements of successful governance arrangements.

If you missed the workshop – don't worry, you can still be involved. The Harvest report from the Workshop will be available on our website soon, along with our regular project bulletins, and you are welcome to come in for a chat about the project at any time.

Comments from workshop participants:

I was blown away by the success of the workshop - at least a dozen new people who all got on board, real engagement around the tables, everyone stayed to the end and not for the wine and cheese - and I think everyone came away with a really clear picture of what might be possible. I know I did. Looking forward to the next one. Marian

One key takeaway is that Morag and Heather have a great depth of knowledge and it creates confidence in the project. Once I heard that 2 small/medium wind turbines could power 2,500 homes I was gobsmacked and think it's doable. I'd love us to be able to create an ambitious project... our table was really switched on by the connectedness and success that was created by the other community projects. And the idea of a co-op or shareholder type funding structure was an eye opener. Deb



Australia's Biggest Morning Tea

Hello!

You are invited to our **Australia's Biggest Morning Tea**. Let's get together and enjoy a cuppa so we can support those impacted by cancer.

Host: Tarwin District Auto & Machinery Club Inc

Where: Tarwin Lower Hall

Date: Sunday 7th May

Time: 10.00am – 12.00pm

Details: \$5.00 per person (includes morning tea)

For further enquiries email – tarwindamc@gmail.com



See you there!

Raffles to be drawn on the day- \$5.00 for three tickets



Cancer Council



VENUS BAY ANGLING CLUB



VENUS BAY ANGLING CLUB will hold the May fishing competition from the 5th May to the 7th May. Comp starts at 12 noon on Friday with a weigh in at the club rooms 4-6p.m. Saturday weigh in is 4-8p.m. and the final weigh in on Sunday 2.30 -3.00 p.m. Members can win a Cavity voucher with the winning fish. Our BBQ will be held on Saturday night from 6.00 p.m., meat is provided and members and visitors are asked to

bring along a hot dish/salad/dessert to share. Members draw has jackpotted to \$100.00, be there to win.



Non members are most welcome to join in, there is a \$5.00 entry fee for the fishing comp which includes the BBQ Saturday night. If you are interested in joining the club membership is \$30.00 per year per family.



Quite a few good fish have been caught lately. These are two of our long term members, Lindsay and Phil, also two of the best fishermen in the club and always happy to give you a few tips (although they may be reluctant to share their secret spots!). So come along and check out the club, bring the family and if the kids want to have a go we have rods for loan at the club.



Planning a burn off?

Check. Apply. Notify.

Go to firepermits.vic.gov.au
or call 1800 668 511



SCAN TO FOLLOW US ON FACEBOOK
TARWIN LOWER AND DISTRICT FIRE BRIGADE

Tarwin Lower Union Church



Regular services:

Saturday 5.30 p.m. **Catholic**

Liturgy/Communion on the Saturday before the 7th, 2nd, 4th and 5th Sunday of the month

Saturday 6.30 p.m.

There will be NO Mass in May

Sunday 10.30 a.m. **Anglican/Uniting**

Our mission is to be a welcoming, sharing Christian community

Coming up:

*Women's discussion group: 11th and 25th May at 10.30 a.m.

*KYB (Bible study): 12th and 26th May at 5 p.m.

Keep this date free:

Sunday 30th July: celebrating the 70th anniversary of the church building (more details to follow)

Tarwin Lower Film Society

Welcome to Season 2023/2024

- 21 Jul 23 Ali's Wedding (Aust. romantic comedy)
- 18 Aug 23 Gurrumul (Aust. documentary)
- 15 Sept 23 Misbehaviour (U.S drama)
- 20 Oct 23 Carol (U.S romance/drama)
- 17 Nov 23 The Extraordinary Journey of the Fakir (Indian adventure/com)
- 19 Jan 24 The Boat that Rocked (U.K comedy)
- 16 Feb 24 Baby Teeth (Aust. drama)
- 15 Mar 24 Conversations with my Gardener (French drama/comedy)
- 19 Apr 24 Honeyland (Macedonian drama)
- 17 May 24 Frida (U.S biopic)
- 21 Jun 24 Military Wives (U.S comedy/drama)

Tarwin Lower Hall
3rd Friday each month (ex Dec)

Starts 7:30 pm sharp
Doors open at 6:45 pm

Membership

\$60 pp for season

\$25 pp for 3 months

*Program subject to change



TARWIN LOWER
FILM SOCIETY

BYO Drinks & Nibbles

TLfilmsociety@gmail.com

www.tarwinlowerhall.com/
filmsociety



ALL OF ANDERSON INLET AND THE TARWIN RIVER ARE NOW CLOSED FOR RECREATIONAL DUCK HUNTING FOR 2023.

Wetland closures – 2023 duck season

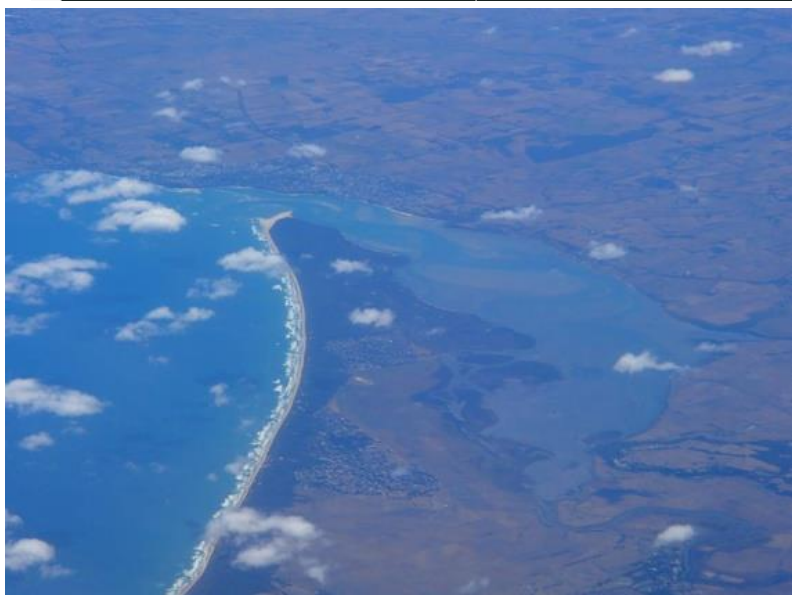
Closed or further regulated hunting areas

Occasionally, wetlands or parts of wetlands, may be closed to duck hunting or hunting may be further regulated (e.g. hunting from boats prohibited) to protect concentrations of rare or threatened species from disturbance or being mistakenly shot.

Further regulation can involve additional restrictions on hunting times, equipment and hunting methods. If a closure is required, this can involve a partial closure of a hunting area or full closure.

Wetlands are monitored throughout the duck season. If the reason for further regulation or closure no longer exists, the wetland may be reopened to hunting.

The [More to Explore](#) app will be updated with wetland closures.



To hunt responsibly check for closure updates on the Game Management Authority website before planning to hunt.

<https://www.gma.vic.gov.au/hunting/duck/wetland-closures-duck-season>

Please report illegal hunting to Wonthaggi Police and to the Game Management Authority via their website.

Wonthaggi Police: 56714100



The Orange Bellied Parrot is endangered – prompting the protection of locations including Anderson Inlet



Victoria Government Gazette

No. S 196 Friday 21 April 2023
By Authority of Victorian Government Printer

Wildlife Act 1975 CORRIGENDUM

The notice published in the Victoria Government Gazette No. S 195 on 21 April 2023 is amended. The description below replaces the corresponding description in the previous Gazette Notice.

Area Name	Location
Anderson Inlet	The whole of Anderson Inlet, located in the South Gippsland Shire in Venus Bay, southeast of Inverloch.

Published with the Authority of the Secretary to the Department of Jobs, Skills, Industry and Regions

For and on behalf of the Secretary to the Department of Jobs, Skills, Industry and Regions

Signed MARK SANDIFORD
Name Mark Sandiford
Director, Outdoor Recreation
Department of Jobs, Skills, Industry and Regions
Dated 21 April 2023

What's the buzz?

@ the Tarwin Lower Mechanics Institute Memorial Hall

By Marg de Wolff

Hi folks. Following on from our terrific start to the year, the events just keep coming! Firstly though a massive thanks to those who attended the **ANZAC Day** march and ceremony last month. I can think of no finer gathering with representatives from all our major community groups, businesses, local police and the TL Primary School working together to honour those who fought in war. Special thanks to Graham Romanes who played his bagpipes during the wreath laying – just beautiful, and guest speaker Graham Kennedy for his words of reflection on mateship and the ongoing challenges faced by servicemen and women due to their experiences in war.

Some of you with keen eyes may have seen work has finally commenced on the weatherboard replacement project!! We are so grateful to **Matthew Holmes** for undertaking this job with such care for the old girl. We won't flash any pics of her undressed but be assured when the job is complete the Hall will mark the occasion with due pomp and ceremony!

The **Tarwin District Auto & Machinery Club** will be hosting a [Biggest Morning Tea](#) on **Sunday 7 May** raising funds for Cancer research. A fabulous event to have on Mother's Day! Details to come – check their socials.

Take some time to invest in you! Tracie B Mitchell continues her program of **Yoga classes** and a new timetable for the Autumn period has been released. Please check her FB page [Twirling Sheila](#) for up-to-date class times. Bookings are essential - Please call or text Tracie to secure your place on the mat **0421 300 407**.

The **Tarwin Lower Film Society** next screening on **Friday 19 May 2023** is **"Sarah's Key"** (USA Rated PG)

"Julia Jarmond ([Kristin Scott-Thomas](#)), an American journalist who's been living in France for 20 years, investigates the terrible rounding up of Parisian Jews and their incarceration in the bicycle stadium, Vel'd'Hiv, during the Nazi occupation of France. Tracing her way back through events, her path crosses that of Sarah, who was ten years old on that fateful day in July 1942. For Julia, what was intended to be a subject of an article then becomes of a personal nature, revealing a family mystery."

Purchase your membership online at [Trybooking.com](#) and enjoy a wonderful night at the Hall. Get a table together or just join one and meet some new people! BYO your drinks and snacks. **Doors 7pm; Film 7:30pm.**

Click [here](#) for more info on membership for 2023 and upcoming movies



Next **Village Market** will be held on **Monday 11 June** for the King's Birthday????– 8.00am – 1.00pm.

Every Dog Behaviour & Training Sunday School is held behind the Hall in amongst the shady trees each Sunday with Christine Grant contact and class info [here](#). Christine has developed a strong following in our community helping dog owners work with their four-legged companions on a huge variety of behavioural issues. Thanks Chris!



On **May 6th**, Tarwin Lower Hall will shake to the infectious Americana rhythms of Melbourne favourites, **"The ReChords"**. With a range spanning Rockabilly, Alt country and Bluegrass right through to 60's pop vibes, this three-piece know how to craft a song and get you on the dance floor!

Doors 7:00pm Adults: \$42 Concession: \$34

Only a handful of tickets are left so head online now to book and avoid disappointment.

Dress to impress. Hot Dogs will be on sale from the Diner on the night! See you there.

<https://www.trybooking.com/CHFVR>

AMERICANA | ALT COUNTRY | HILLBILLY | RHYTHM & BLUES | ROCKABILLY

RECHORDSTH



May 6th 7pm
Great live music
Tarwin Lower Hall

Tix \$34 conc \$42 full. All profits to Hall reno fund.



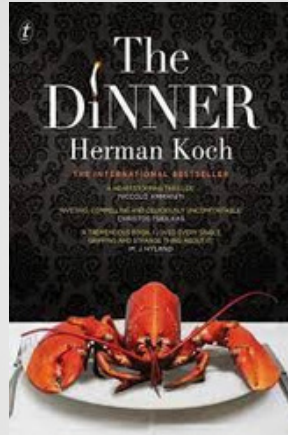
<https://www.trybooking.com/CHFVR>

www.therechords.com

Mondays 10.00 - 12.00
Silver Banksia Plant
group

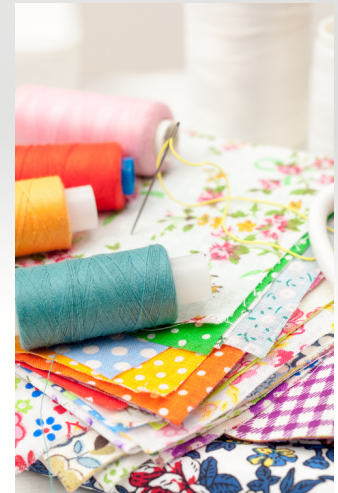


Book Club
2nd Tuesday
of the Month
5.00 - 6.30



Current
book

FREE Community Lunch
Wednesdays 12.00



Sewing mornings
every wednesday

BYO Project or help with upcycling projects

Ukulele
Thursdays 7.00 - 8.30



Playgroup Thursdays
9.30 - 11.00



Sick and carer's pay for casual and contract workers.

Don't wait until you're sick.
We can help you sign up today.

vic.gov.au/sickpayguarantee



Partnering with



Victorian Sick Pay Guarantee

38 hours a year sick and carer's pay for casual and contract workers.

We can help you sign up today.



Partnering with



The Venus Bay Community Centre is an official community outreach provider for the Victorian Sick Pay Guarantee. The program provides eligible casual, contract workers and self employed persons with up to 38 hours a year of sick and carer's pay. It means you can stay home when you need to and not miss out

on pay.

Drop in and we can assist you to work out if you are eligible and register for the program. You must be registered in advance to access this support. Speak to us today if you need a hand to sign up or make a claim.

Power Saving Bonus

Staff at the Community Centre can also help you out with the Power Saving Bonus, if you claimed this prior to March 23rd you are now eligible to claim another \$250.

Bring a full copy of your bill and your bank account details in and we can process it for you.

DID YOU KNOW?

THERE IS A NEW ROUND OF THE VIC STATE GOV



\$250 POWER SAVING BONUS

SCHEDULED TO REMAIN OPEN UNTIL 31 AUG 2023



TRANSPORT OPTIONS IN OUR DISTRICT

Transport in our district has been an ongoing issue for many years, with no easy solution in sight and many challenges to providing a service that is cost effective and provides a service for people when they want and need it.

We've had a complex history with a few different iterations of transport options- some ill-fated and some not supported. Many years ago, the Men's Shed raised funds from community and fundraising to purchase an 11 seat vehicle called the Bus About Town – here's some info about the service.

Bus About Town

Ph: 0487 543 632



The management of the Bus operations requires patronage to be by way of Club Membership and the following is how that will be administered.

The Bus committee has responsibility for the process of defining schedules and booking procedures.

The current priority is a shopping Schedule each second Thursday starting from 2nd Estate picking up at 1st Estate and Tarwin Lower with an ETA in Wonthaggi of 10.30 am.

ETD from Wonthaggi will likely be 12.45 – 1.00 pm.

Membership will entitle individuals to use the bus services on any and all scheduled services and will be \$25.00 per Qtr or \$100.00 per annum. (If this service is used for a minimum of 40 trips in a year this averages \$2.50 per trip). Membership for Couples will be \$50.00 per Qtr or \$180.00 per annum.

Clubs or Community organisations will pay a fee which will entitle those entities to use the Bus for their members for a daily or overnight outing for a contribution of \$100.00 per day plus refuelling. This usage is entirely separate from and unrelated to Individual Membership.

Individual Members may however request usage of the bus for private trips which could include non-members and at the same daily contribution as the Club usage (\$100.00 plus fuel).

For those who do not wish to become club members but who may wish to use a regular scheduled shopping service on a casual basis, a donation of \$5.00 per trip is required.



Venus Bay, Tarwin Lower & District Men's Shed
190 Lees Road Venus Bay

The Committee of Management has a Reservation System with a dedicated phone number which will be used for all bookings including scheduled trips.

From time to time the community or groups will be invited to special trips such as visits to the Dandenong market and or Leongatha movies. Notices of these services will be advertised as and when they are scheduled.

BUS SCHEDULE APRIL TO AUGUST 2023 –

ALL DATES ARE ON A THURSDAY AND WILL GO TO WONTHAGGI SHOPPING

APRIL 13 + 27

MAY 11 + 25

JUNE 8 + 22

JULY 6 + 20

AUGUST 3 + 17 + 21

Membership forms are available from Men's Shed or in the Venus Bay Community Centre foyer.

NEW PATIENT TRANSPORT SERVICE – coming soon to our district.

You will need to register for this free service – you can do that before you need it. Pop into the Venus Bay Community Centre and we can help you get the registration sorted.

What is Flying Doctor Community Transport?

Accessing health care and maintaining social connections can be challenging for residents of rural areas who are unable to drive or have limited transport options. Flying Doctor Community Transport aims to help Victorian communities overcome this barrier by providing eligible clients with free transportation to health care appointments and Social Support Groups.

The service is offered by the Royal Flying Doctor Service (RFDS) Victoria in partnership with South Gippsland Hospital and supported by a team of dedicated volunteer drivers in each community.

Eligibility

To use the Flying Doctor Community Transport service, you must:

- > Live within a service area
- > Be travelling to a health related appointment or Social Support Group*

Operating hours

Flying Doctor Community Transport operates during business hours Monday to Friday. We do not operate on public holidays.

* A Social Support Group is defined as a variety of leisure and social connection activities that are funded through Home and Community Care (HACC) and facilitated through registered health services.

Service areas

For the most up to date information on our service areas, please visit our website: www.flyingdoctor.org.au/vic/what-we-do/community-transport/

Pick up & drop off zone



talc

Tarwin Lower & Venus Bay

Tourism & Local Commerce Association



The Tarwin Lower and Venus Bay business association has been resuscitated. But we need much more oxygen.

Not the kind dispensed by our highly capable CERT team, but in the form of new members. It has never been easier to join, membership eligibility is very broad, and there has never been a more exciting time to become involved.

After three stagnant years the next three will be full of much activity with vibrant commerce and tourism expansion. It all starts in a couple of months when by years end the Venus Bay commercial precinct will be totally transformed.

To register your interest in the Tarwin Lower-Venus Bay Tourism & Local Commerce (TALC) Assn or find more information, please contact Bruce Leonard bruce.talc@gmail.com or Dan Lawrie danlawrie@alexscott.com.au



Flying Doctor partners with South Gippsland Hospital to expand Community Transport

The Royal Flying Doctor Service (RFDS) Victoria is delighted to announce a new partnership with South Gippsland Hospital to expand its Flying Doctor Community Transport service into the community of Foster and surrounds.

This free service offers eligible community members transportation to health appointments and funded social group activities, utilising a team of trained volunteer drivers from within the local community.

Flying Doctor Community Transport originally launched in the Heathcote region in 2018 before expanding into Rochester in 2021, and then Numurkah and Warracknabeal in 2022. This recent growth is due to funding from Western Victoria Primary Health Network, Murray Primary Health Network and Gippsland Primary Health Network, who are supporting the expansion of the service into eight new communities under the Australian Government's Primary Health Networks Program.

The site in Foster marks the first time the program has expanded into the Gippsland region.

"We are thrilled to be partnering with South Gippsland Hospital to bring the Flying Doctor Community Transport service to Foster," says Jocelyn Syme, Health Service Manager for RFDS Victoria.

"One of the greatest costs to the health system is missed appointments, so it is wonderful to help people access the care they need.

"In selecting Foster as a new site for Community Transport, we undertook extensive investigation, data analysis and community consultation, and found that the need for such a transport service was incredibly high in this pocket of South Gippsland."

South Gippsland Hospital already operated its own volunteer-led community transport service, and invited RFDS Victoria to assume coordination of this service in order to grow the program in line with community needs.

"This is a wonderful opportunity for South Gippsland Hospital to partner with an organisation that has such a strong reputation," said South Gippsland Hospital CEO, Paul Greenhalgh. "The Flying Doctor Community Transport service will ensure that those in our community without ready access to transport will have an enhanced transport experience. Furthermore, volunteers will have improved support with a dedicated coordination role. It's a win for everybody."

Through this respectful partnership, RFDS Victoria intends to support and strengthen the community of Foster and surrounds by providing continued access to vital medical appointments.

To find out more about Flying Doctor Community Transport and this new partnership with South Gippsland Hospital, please

call (03) 7046 4664 or email communitytransport@rfdsvic.com.au.



VENUS BAY - TARWIN LOWER -
YOGA
with Tracie B Mitchell
BREATH - MOVE - CALM - SPACE
AUTUMN SESSIONS

APRIL 24TH - JUNE 23RD 2023

AUTUMN OFFERINGS INCLUDE FOUR CLASSES EACH WEEK
AND TWO DIFFERENT VENUES-

Morning classes are back at the
Venus Bay Community Centre
27 Cantrebury Road Venus Bay 3956



FRIDAY 9:30PM-10:30PM
SUNDAY 9:30AM-10:30AM

Tarwin Lower Mechanics Hall
27 River Drive Tarwin Lower

MONDAY 5:30PM-6:30PM
TUESDAY 10:00AM-11:00AM



Investment \$25 casual class

Buy a class card. Pay \$200 and receive 9 classes for the price of
eight *valid for the Autumn term only*

Bookings are essential . To reserve a spot please text 0421 300407

STAY UP TO DATE TWIRLINGSHEILA PRODUCTIONS



EXPRESSIONS OF INTEREST

• **RECYCLING ENTERPRISE COORDINATOR**



We are seeking
EXPRESSIONS OF INTEREST
for the role of
**RECYCLING ENTERPRISE
COORDINATOR**
at **VENUS BAY COMMUNITY CENTRE**

We're looking for a staff member to join our team – particularly for our Community Recycling Op-Shop Enterprise.

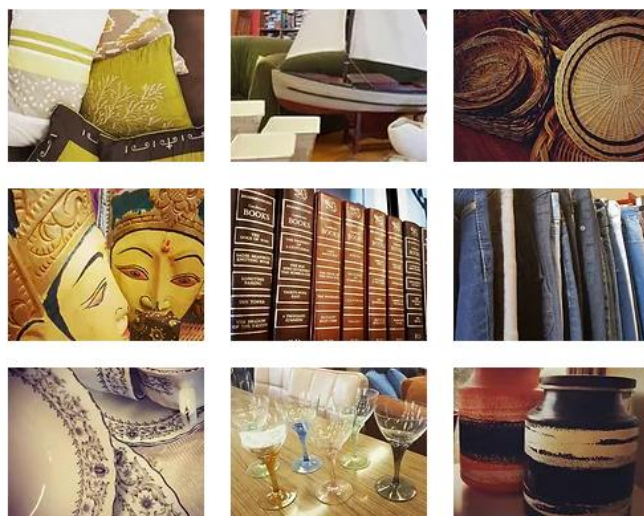
The role is 15 hours per week and includes Saturdays. Job share arrangements may be considered for the right people. This is a maternity leave position.

Full training will be provided, and award rates will apply. The ability to work Saturdays is essential.

COMMUNITY RECYCLING ENTERPRISE

OPEN MONDAY,
WEDNESDAY,
THURSDAY & SATURDAY
10.00-2.00

Our aim is to provide an alternative to taking goods out of our community, or even worse, throwing them out. We recycle & redistribute preloved clothing, books, some furniture and lots of bits and pieces. All proceeds from the op-shop go towards the other programs The Centre is able to offer. This service can only operate with the support of our volunteers and with the generous donation of goods.



The person we're looking for would have great communication skills, the ability to work as part of a friendly team, have retail experience including point of sale, merchandising, displays, stock management and pricing. You would be working with a range of staff and volunteers who all contribute different skills to our Enterprise. It's a fun place to work, with great people, and a friendly and welcoming environment with community at heart.

If this sounds appealing to you – please contact the Centre: info@vbcc.org.au or have a chat with Alyson or Carol at the Centre to find out more.

**Please join us for a presentation and
information session:**

2.30-3.30pm

Wednesday 17th May

Foster War Memorial Arts Centre

Navigating Health

and/or

Community Services

**An opportunity to find out about
local services to support
independent living, active and
positive lifestyles, and health and
wellbeing over 65 years.**



South Gippsland Hospital

Adaptability. Trust. Excellence. Accountability. Mutual respect.

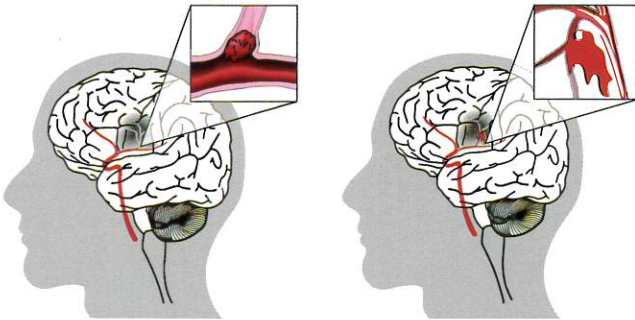
About stroke

What is a stroke?

Stroke attacks the brain, which controls the human body. The brain needs oxygen and nutrients carried in blood. A stroke happens when the brain does not get the blood it needs.

Brain cells die quickly when they do not get enough blood. Up to 1.9 million brain cells may die every minute.

There are two types of stroke:



Ischaemic stroke
(spoken "is-key-mick")
Blood clot or plaque
blocks artery

Haemorrhagic stroke
(spoken "hemm-orr-ragic")
Artery breaks or bursts

Every stroke is different. How a stroke affects someone depends on where it happens in the brain, and on how big the stroke is.

Stroke can affect a person's body, their emotions, and the way they think. It can cause muscle weakness, and problems with speaking, memory, hearing or vision.





Stroke is always a medical emergency.
Call triple zero (000) at the first sign of stroke.


How is a TIA different?

TIA is a transient ischaemic attack. A TIA happens when the blood supply to your brain is blocked for a short time. A TIA has the same signs as a stroke, but the signs go away on their own. Often the signs only last for a few minutes.

Never ignore a TIA. Call triple zero (000) right away, even if the signs go away and you feel better.

Learn the F.A.S.T. signs of
STROKE

	F FACE <i>drooped?</i>
	A ARMS <i>can't be raised?</i>
	S SPEECH <i>slurred or confused?</i>
	T TIME <i>is critical! Call 000.</i>

If you see any of these signs
Act FAST call triple zero (000) 

Signs of a stroke

Face – check their face. Has their mouth drooped?

Arms – can they lift both arms?

Speech – is their speech slurred? Do they understand you?

Time – time is critical. Call triple zero (000) now if you see **any** of these signs.

Share the F.A.S.T. message with your family and friends.



Do you have a few hours to spare?

We are always looking for volunteers to help out at the community centre...do you have any particular skills you can contribute? Or perhaps you have a bit of time to spend helping with filing in the office or sorting donations for the Recycling enterprise?

Every bit counts and every bit is appreciated. We could not function without our fabulous team of volunteers.

So why not come and join in!

Situated at 27 Canterbury Road, Venus Bay.

Phone: 5663 7499, Send mail to Post Office Box 786, Venus Bay 3956

Email: info@vbcc.org.au Website: www.vbcc.org.au

Opening hours reflect the season - please check our website or Facebook for details

or call Alyson 0416 242 331

Venus Bay Community Centre is supported by:

Department of Health & Human Services (Victoria) and the Commonwealth Government, South Gippsland Shire Council.

Our website is www.vbcc.org.au

Find current and back issues of Matter Of Fact on our website. Please contact us if you wish to be on our email distribution list.



VENUS BAY
COMMUNITY CENTRE