

MATTER OF FACT

a free community newsletter published by
Venus Bay Community Centre

June 2023 Vol 6 Issue 14



Providing information for
Venus Bay, Tarwin Lower
and Walkerville district

VENUS BAY
COMMUNITY CENTRE

We acknowledge the Traditional Owners of Country throughout Australia and recognise their continuing connection to land, waters and culture.

We pay our respects to their Elders past, present and emerging.

JOIN US



Community Energy Resilience and Reliability Feasibility Study at Venus Bay and Tarwin Lower

Resilience and local wealth building

How fixing our energy system can do both

Come along to develop the business structures and prioritise the projects that will build our community resilience, increase our renewable energy and deliver value back to the community. Building on principles from Workshop #3, participants will start guiding decisions about what, who, when and how we can build a strong action plan.

This project depends on community input and engagement.



Scan the QR code for more information on this feasibility study.

This is a **FREE COMMUNITY EVENT**. Your registration will help us with catering. Please let us know if you can come by email: info@vbcc.org.au

**VENUS BAY
COMMUNITY CENTRE**

27 Canterbury Rd Venus Bay



COMMUNITY ENERGY for Venus Bay?

Community Resilience and Reliable Energy Feasibility Study at Venus Bay

let's talk about the possibilities of community owned energy!



Keep up to date with planned community consultations via the timeline on the back. For more information scan the QR code or head to: vbcc.org.au/communityenergy

Welcome to Bulletin #8 June 2023

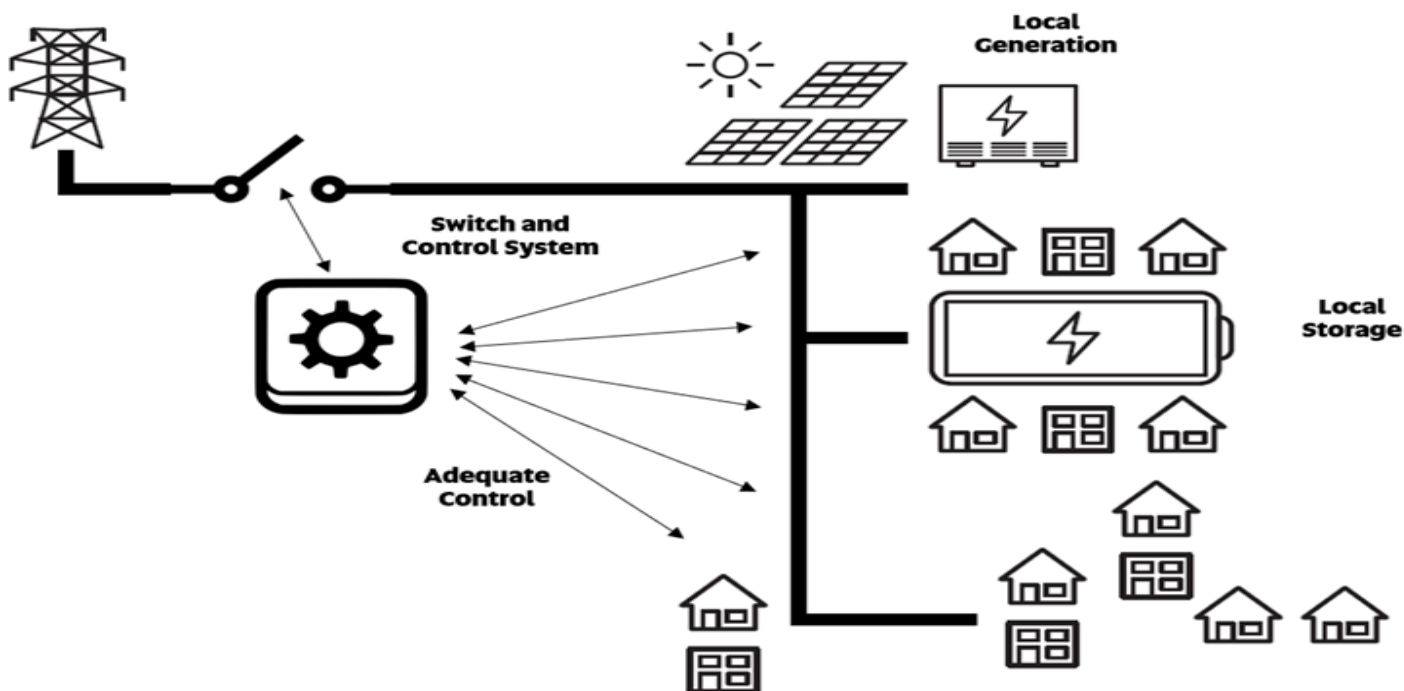
What might an energy self-sufficient community look like?

In the February Community Energy Workshop, we looked at the four key elements of a local electricity system that would allow Venus Bay and Tarwin Lower to be self-sufficient for energy. It boils down to this:

- Energy generation – we need to produce enough energy to meet our needs, in most weather conditions
- Control systems that help us to change when we use energy - shifting to times of the day that match up with when abundant solar energy is available. Our surplus solar energy can be soaked up by hot water systems and in pre-heating or cooling our homes during the day and, in future, electric vehicles. We may also need controllers to turn these big uses off when there isn't enough energy.
- Battery storage – we need batteries that can also store surplus energy and provide electricity when solar is not available. These batteries could be at single property or neighbourhood scales.

- A point for disconnecting and re-connecting – if we want to be self-sufficient by providing local, reliable energy, there will be times when we should disconnect from the grid, during outages for example, and generate our own electricity locally, for as long as the outage lasts.

Installing enough renewable energy to be self-sufficient will take a lot of effort and investment, so it won't happen overnight. Any energy efficiency upgrades or solar and battery installations on households, community buildings and businesses premises from now on will help us progress towards self-sufficiency and result in reducing the size of any neighbourhood batteries or solar generation. The main contribution of neighbourhood batteries and solar being to provide energy to households or other premises that can't install their own systems and to top up the total energy needs of everyone beyond what is met by the systems that households, community buildings and businesses do have. This top up supply from neighbourhood batteries and solar will be particularly important if outages go on for longer periods of time but may take us a while to achieve.



This diagram shows how solar and battery systems on households, community buildings, businesses and at neighbourhood scales together with control systems and disconnection/re-connection switches can all combine to enable our community to be energy self-sufficient, particularly during outages.

What organisational structures might support our community energy goals and initiatives in Venus Bay and Tarwin Lower?

Organisations come in many forms. By understanding the differences, we can ensure that the organisational structure(s) we choose for our community energy initiatives is a good match with our values and our ambitions.

We are most familiar with Associations, Co-operatives and Companies - a comparison of these can be found through this [link](#). All three business types have some flexibility in how they operate, and can achieve similar objectives – for example, they can all operate democratically and be structured as not-for-profits. The constitution (the document that establishes and is used to govern an organisation) is important in ensuring these values and ambitions are upheld.

Here are some examples of these different organisational structures:

[CORENA](#) is an incorporated association in South Australia. Incorporated Associations full under state law. Democracy and not-for-profit status are common features of associations. They also have the lowest reporting burden, though in most cases this falls on volunteers or raises costs by having to pay for services. CORENA runs a revolving fund and fundraises from individual donors. The fund has grown from nothing in 2013 up to \$560,000, mostly from small donations.

CORENA has now loaned \$1.2 million to community-based groups for energy efficiency and renewable projects that reduce carbon emissions, such as installing solar panels, energy efficiency upgrades and purchasing electric vehicles.



A separate committee of responsible persons represents the interests of donors and the public at large, ensuring that donations are spent in the way the donors and tax office expect.

Incorporated associations cannot offer shares to investors or make a profit. Charitable status also incurs extra organisational effort and costs, although there are benefits for those making donations.



Hepburn Energy, formerly known as Hepburn Wind, is a co-operative. Co-operatives are a flexible form of organisation which can be setup to distribute profits back to members (known as a distributing co-operative) or operate as a not-for-profit (a non-distributing co-operative). The basic principle is one vote for each member and co-operatives around the world follow [a set of seven principles](#) to build organisations that are fair and benefit members and their communities. Hepburn raised over \$10m to build its turbines. It followed required financial processes to sell shares in the cooperative, which formed the backbone of their fundraising efforts.



ENOVA was a social enterprise with a company structure. It was Australia's first community energy retailer before it went into voluntary administration last year when it was unable to renew electricity market contracts to underpin its electricity sales obligations. It built two things into its constitution; 1) all shareholders had a maximum of three votes making it more democratic and 2) 50% of profits were earmarked to run the charity 'Enova Community'. There are strict controls on financial processes associated with share offers, so raising the \$2m for establishing the organisation with adequate working funds to operate as a retailer was a challenge. These fundraising rules have been extended to allow for [crowdfunding](#) with smaller shares as a way to offer equity to new shareholders.

Look out for the Harvest Report from Workshop #3 – available online from May 17th.

And please put Workshop #4 – Saturday June 24th, 2023 in your diaries.

What organisational structures might support our goals continued.....

All structures require a management group or board to run the entity, and the people would need to come from our community. It is worth mentioning that many community energy projects choose to build on existing organisations or create a supporting arrangement with an organisation that shares the same goals. Many energy projects also warrant partnerships with bigger organisations. As a community, we need to consider whether there is an existing structure that we could utilise or work with, and how to assert our ambitions and values when working with partner organisations.

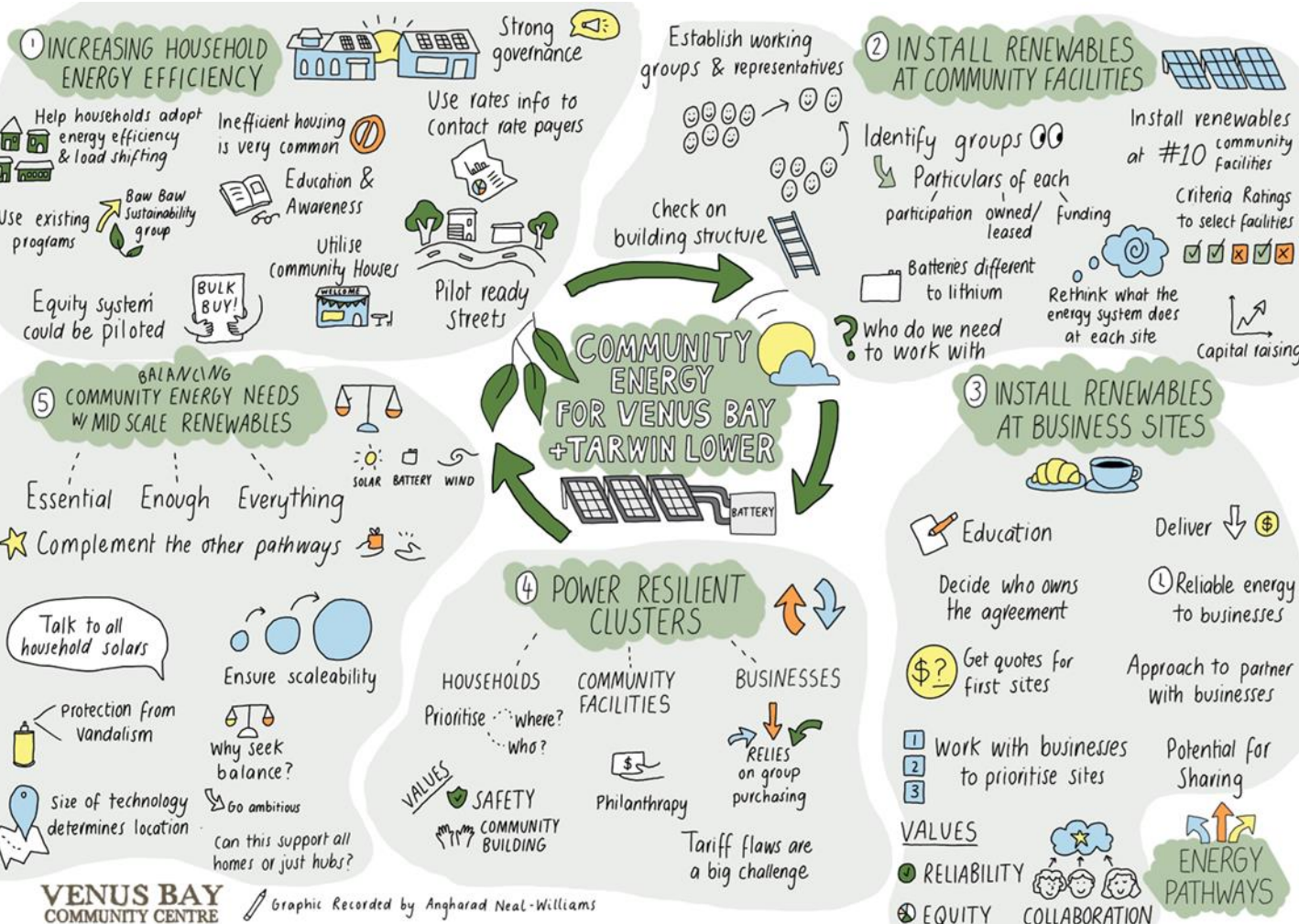
The examples described in this article only relate to energy solutions, but if we want our entity to be able to consider other initiatives, we will have to include this in the constitution. Some structures will also limit or prevent profit distributions, which we will need to consider if we want to pay investor dividends.

Here are some questions that our community needs to answer before it establishes any new organisations.

- What activities do we imagine doing? Where will the time and money come from?
- What experience do we have in the community for these different structure types?
- Do we want an organisational structure that is flexible to accommodate new ideas as the community and its energy transition evolves?
- Who should be a part of the membership or be able to invest?
- Are there existing structures that we could utilise or partner with?

In Workshop 4 we will explore what organisational structures might best support our community values and energy options in Venus Bay and Tarwin Lower. This is an exciting stage of the Community Energy Study and the last part to consider, as we near completion of our plan that will present the picture of what community-owned energy looks like for us.

The five potential energy pathways illustrated below are being considered for how we could support households, community groups, businesses and our whole community to improve energy efficiency and instal solar and battery systems at single property and neighbourhood scales. These pathways are based on what is already working in other communities. We need organisational structures and partnerships that enable these pathways for us.





Venus Bay Reconciliation Event

A chance to come together to recognise the past and walk together for a harmonious future

27th May - Midday
 Van Cleef Reserve
 Lees Road, Venus Bay
All welcome



Welcome to country,
 Smoking ceremony,
 Yarning,
 with local clanswoman & speakers from Venus Bay

As reconciliation week started, over 100 people gathered in Venus Bay to acknowledge the past and walk together into the future. Hosted in the newly landscaped Banksia Gathering Place in Van Cleef Reserve in Venus Bay's second estate, the sun shone as people were welcomed to country by traditional custodian Sonia Weston and her family. With the haunting sounds of the didgeridoo, people were bathed in the smoke from local gum leaves – with the knowledge this marked us together as one with each other and the country on which we met. Sonia explained this was a traditional way that when people from different areas met, they had been welcomed and the scent of local fire acting like a handshake.

Sonia spoke of the cultural significance of this land we share, acknowledging the past and what lays beneath our feet – encouraging us to walk lightly and with understanding and respect to honour people past & present.

Sonia shared her knowledge of indigenous foods and plants and brought some of artifacts along, explaining their use and significance. All who were present shared a beautiful experience, with many shedding a tear as stories were told.

This is the first ever reconciliation event in Venus Bay – organised by 2 passionate community members who felt the time was right to gather, working with Sonia and her family to bring the day together. Everyone left with the hope this is the first of many cultural sharing and gatherings to come.





© 446 - 24 June 2020

VENUS BAY PRECINCT UPGRADE ABOUT TO BEGIN !

The Venus Bay Business Precinct redevelopment and upgrade will begin in June. You may remember a series of consultations in 2020 with community members and business owners – the results of which were worked into the adopted Precinct Plan. The full plan can be viewed [here](#); with indicative drawings to the left.

Media release from Shire states:

Construction of a new streetscape in Venus Bay will be commencing soon after a contract was approved to award at last week's Council Meeting.

The tourism precinct redevelopment will include pedestrian pathways along Jupiter Boulevard and Centre Road to link key places of interest such as Jupiter Boulevard Park, shops, caravan park, and

the community centre.

Designed to be more pedestrian friendly, the redevelopment works will include a zebra crossing and other traffic calming measures. Car parking will be retained close to the commercial centre but will be reconfigured in places.

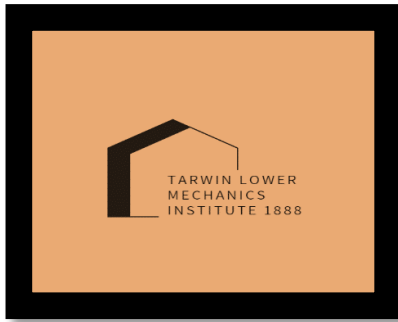
The streetscape works will also include road and footpath reconstruction and the installation of new stormwater drainage, pits, pipes and property connections. New energy-efficient streetlighting will also be installed.

The project was awarded to BJ's Earthmoving at a cost of \$1.72M and is expected to commence in June 2023.

We asked for some clarification about details:

- Exactly when in June it is likely to commence?
Late June – subject to weather and contractor availability. We will let affected properties/businesses know prior.
- How long will it take?
As the works are starting in the wetter months, it is difficult to forecast an accurate completion date at this point in time. However, the most disruptive works are planned to be completed before the busy summer season.
- What options for car parking will be in place whilst work is going on (for businesses and community members)?
Parking availability will be heavily affected at times during construction and we will work with the contractor to minimise disruption as far as practicable.
- Will it be following the design that was consulted upon, and agreed upon at Council in 2020?
Yes, the design is generally in accordance with the Venus Bay Tourism Precinct Streetscape Plan that was widely consulted with the community and ultimately adopted at the June 2020 Council Meeting. The project delivers many elements of Stage 1 and Stage 2 of the Plan.
- What support will local businesses be provided with (eg loss of trade due to works)?
Access to businesses will be maintained during business hours throughout the works. We will work with businesses and our contractor to manage disruptions as far as reasonably practicable.
- How does this project fit with the waste water management plan for the business precinct?
The project does not include any element of waste water management. However, the design is not expected to significantly inhibit any future provision of a reticulated waste water service.

With the completion (almost) of Jupiter Skatepark, the final elements of environmental signage going in to Van Cleef Reserve, and the Business precinct work coming – it's exciting times ahead for Venus Bay!



A quick recap on last month's activities saw **The ReChords** really warm up the sell-out crowd on a cold May night with generous long sets of their feel good, fun tunes brought to you by our newest community producers, **Paul Hastings** and **Dale Knight**. The **Tarwin District Auto & Machinery Club** hosted a [Biggest Morning Tea](#). The great turn out enjoyed a wonderful spread, some smooth live tunes and raffle prizes.

The weatherboard repair project steams ahead but due to the works Tracie Mitchell has temporarily relocated her Yoga classes to the Venus Bay Community Centre. Please check her FB page [Twirling Sheila](#) for up-to-date class times. Bookings are essential - Please call or text Tracie to secure your place on the mat

0421 300 407.

Great news! **The Tarwin Lower Film Society** has launched their new season of films for 2023/24! Another interesting variety of films with some titles well worth re-visiting and a couple I missed the first time around – perfect. Click here [Trybooking.com](#) to book your season pass to some great cinematic entertainment. Full program below. This month's screening on **Friday 16 June 2023** is **"Holy Lands"**. (USA Rated M)

"Holy Lands is the story of a Jewish American doctor named Harry, played by James Caan, who moves from New York City to retire in Israel and be a pig farmer. Harry's decision causes an upheaval in not just his own family but in the community in Israel. Pigs are not kosher and considered unclean because of their cloven hoof. Harry has trouble trying to get proper telecommunication to his land in Israel because neighbours don't want his unclean wires running through his yard. This creates a disconnect with daughter Annabelle (played by Efrat Dor) and ex-wife Monica (played by Rosanna Arquette)."

BYO your drinks and snacks. **Friday 16 June, Doors 7pm; Film 7:30pm**

Special end of Season Offering – If you have paid by 19 July 2023 for your 2023/24 season, you will go into the draw for a refund of your ticket price. The Film Society Committee would like to celebrate the end of Season #2 so look out for some special treats on your table for the June screening. President Philip Scott will be introducing the new season and acknowledging the commitment and work of the community members who have made this possible.

Tarwin Lower Film Society

Welcome to Season 2023/2024

21 Jul 23	Ali's Wedding (Aust. romantic comedy)
18 Aug 23	Gurrumul (Aust. documentary)
15 Sept 23	Misbehaviour (U.S drama)
20 Oct 23	Carol (U.S romance/drama)
17 Nov 23	The Extraordinary Journey of the Fakir (Indian adventure/com)
19 Jan 24	The Boat that Rocked (U.K comedy)
16 Feb 24	Baby Teeth (Aust. drama)
15 Mar 24	Conversations with my Gardener (French drama/comedy)
19 Apr 24	Honeyland (Macedonian drama)
17 May 24	Frida (U.S biopic)
21 Jun 24	Military Wives (U.S comedy/drama)

Tarwin Lower Hall
3rd Friday each month (ex Dec)
Starts 7:30 pm sharp
Doors open at 6:45 pm

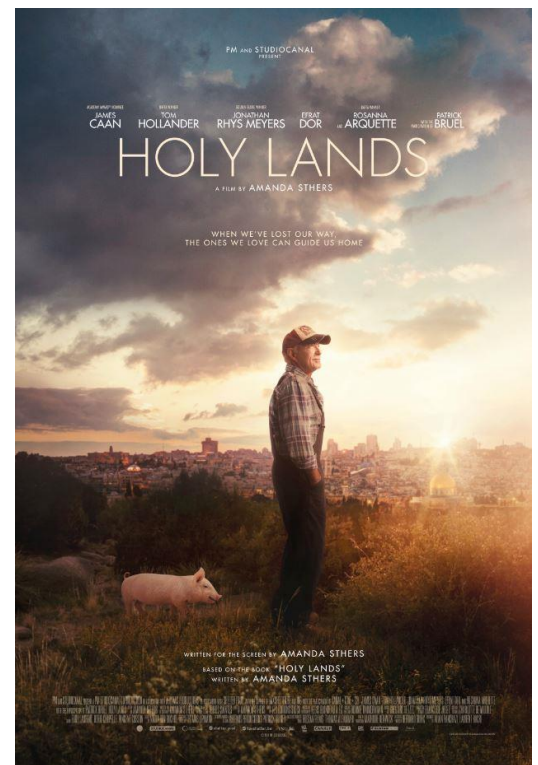
Membership
\$60 pp for season
\$25 pp for 3 months

*Program subject to change

BYO Drinks & Nibbles

Tlfilmsociety@gmail.com
www.tarwinlowerhall.com/filmsociety

TARWIN LOWER FILMSOCIETY



Sally Ford and the Idiomatics

Sally Ford and the Idiomatics play songs of life, love and lived experience. This newly formed trio from Melbourne fuses the musical provenance of its members ... latin, electronica, ska, jazz, brass band, pop and funk. Patrick Cronin and Michael Havir provide lush backing arrangements to Sally Ford's wryly observed lyrics. The expansive sonic palette of



keyboards, samples and electronica is enhanced by trombone, saxophone, flute and even a bit of old-fashioned whistling. Original tunes and freshly interpreted classics come together in this richly imagined musical experience. These musicians bring to the Idiomatics their collective legacy of leading or performing with bands such as the ARIA-winning Melbourne Ska Orchestra, the Spaghetti Western Orchestra, Texicali Rose, Yothu Yindi, Sally Ford and the Pachuco Playboys, Joe Camilleri's Black Sorrows, Skazz and Frank Yamma. **Saturday July 22, 7:30pm**

Tickets on sale 1 June <https://www.trybooking.com/CISFG>

****Mark your diaries – our next Village Market will be held on Monday 11 June 8.00am – 1.00pm.**

Every Dog Behaviour & Training Sunday School is held behind the Hall in amongst the shady trees each Sunday with Christine Grant contact and class info [here](#). Christine has developed a strong following in our community and is now expanding to Mirboo North helping more dog owners work with their hounds on a huge variety of behavioural issues.

That's all for this month, if you are interested in getting involved in any of these activities or want to run your own - get in touch, our committee is completely voluntary, our mission is community – it's your hall!

Cheers,
Marg de Wolff
Secretary, Tarwin Lower Mechanics Institute
Committee of Management
tarwinlowerhall@gmail.com



**TARWIN LOWER MACHINERY AND CAR CLUB
INVITES YOU TO A**

TRIVIA NIGHT

**ON ALL THINGS CAR RELATED
SATURDAY JUNE 17TH AT 7.00 PM**

**AT THE RIVERVIEW HOTEL, TARWIN LOWER
COME AND JOIN US FOR A MEAL AND/OR A DRINK
AND TEST YOUR KNOWLEDGE OF CARS**

NO ENTRY FEE

**FOR BOOKINGS PLEASE TEXT 0423 267 125 OR EMAIL MARK –
mark.l.medew@hotmail.com**

2023 BALD HILLS WIND FARM COMMUNITY FUND GRANTS AWARDED.

A presentation of the 2023 Community Grants was held at the Riverview Hotel this week. Members of the Bald Hills Wind Farm Community Fund committee were pleased to see a range of projects/initiatives awarded funding.

The Committee noted that there were lots of really strong grant applications this year – over \$57,000 of requests for only a total of \$25,000 able to be awarded – it made the decisions really tough. Members noted there was an increase in the number of applications this year – we wish we could fund them all.

Since the inception of the BHWF Community Fund, there have been over \$200,000 awarded to small and district projects in the Walkerville, Tarwin Lower and Venus Bay catchment area. Each year, \$25k is available for projects that benefit the local community.

Each year, up to \$15,000 is allocated to a District project – one that encourages partnerships, collaboration, and multiple benefits; the remainder of funding is allocated to small grants of up to \$2,000.

In 2023, the BHWF Community Fund Committee is pleased to announce the following grants were awarded:

DISTRICT PROJECT (total \$10,000)

- Tarwin Lower Primary School – Playground Upgrade

SMALL GRANTS (total of \$14,550)

- Grants Only Group Inc – Information Technology Networking
- Tarwin Landcare Group – Purchase of 3 3G/4G Connected field cameras.
- Tarwin District Auto & Machinery Club Inc. – Auto Festival Chair/Wall rides (Priority #1)
- Tarwin Lower Mechanic Institute Committee of Management Inc – Turn up the Lights.
- Tarwin Lower Pony Club – Pony Club equipment and education material updates (Priority #1)
- Tarwin Lower & Venus Bay Tourism & Local Commerce Association – Town Christmas Decorations (Priority #1)
- Venus Bay & District Community Emergency Response Team Inc (CERT) – CERTified All-Weather Shelter
- Venus Bay Community Centre – Protecting the Venus Bay Community Centre.



The 2024 Bald Hills Wind Farm Community Fund grants will be open in November 2023, closing in April 2024 with applications awarded in May 2024.

The BHWF Community Fund committee thanks all applicants and wishes every success to those organisations who applied in 2023. They encourage all community groups and organisation to consider applying for funds in 2024.



2023 grant recipients and BHWF representative along with committee members

Festival of Big Ideas



Generating compelling ideas

Scan the QR code to register



Gippsland Performing Arts Centre

16&17th June 2023

Supported by



The Festival of Big Ideas will be held from 16 to 17 June at the Gippsland Performing Arts Centre in Traralgon. The Festival will harness creative energy to generate compelling ideas and inspire each other to help shape the future of Gippsland.

Drive an electric vehicle, hear from change makers, participate in discussions see a lineup of exciting interactive displays and free activities at the Festival of Big Ideas.

Interact with GUS the robot, dance to live local music and catch film screenings designed to inspire, challenge and get you thinking about how you can help shape the future of Gippsland with BIG, BOLD and BRAVE ideas.

The two day



Alex Lieb
Regen Gippsland



Andrew Keast
CEO & Co-founder
Wayfairer.coop



Bodye Darvill
Manager Regional
Programs - Energy
Latrobe Valley
Authority



Caitlin Grigsby



Dr Karl Kruszelnicki



Dr Niraj "Nij" Lal
Visiting Fellow
Australian National
University



Jenny Brereton
Mine Land
Rehabilitation...



Kutcha Edwards



Rowena Barrett



Sarah Cumming



Scott Douglas



Steve Sammartino

event has a range of inspirational keynote speakers and panel sessions. As well as Pitch sessions, Live readings, Children's entertainment and much more.

All sessions and activities at the festival are free. The Festival of Big Ideas will be held from 16 to 17 June at the Gippsland Performing Arts Centre in Traralgon. The Festival of Big Ideas will harness creative energy to generate compelling ideas and inspire each other to help shape the future of Gippsland.

WOMBAT WALKERS



WOMBAT WALKERS - VENUS BAY / TARWIN LOWER WALKING GROUP

WHEN: **WEDNESDAYS AND SUNDAYS** (WEATHER PERMITTING)

TIME: **9:00 AM**

WHERE: **MEET OUT THE FRONT OF '4 SHORE PIZZA'** →

☺ ANYONE CAN JOIN IN ☺



Tarwin Lower Union Church



Regular services:

Saturday 5.30 p.m.

Catholic

Liturgy/Communion on the Saturday before the 1st, 2nd, 4th and 5th Sunday of the month

Saturday 4 p.m. (note new time)

Mass before the 3rd Sunday

Sunday 10.30 a.m. **Anglican/Uniting**

Our mission is to be a welcoming, sharing Christian community

Coming up:

*Women's discussion group: 8th and 22nd June at 10.30 a.m.

*KYB (Bible study): 9th and 23rd June at 3 p.m. (note new time)

Keep this date free:

*** Sunday 30th July: Celebrating the 70th anniversary of the church building**

Have you been for a wander around the church grounds lately?

Two flowering gums, two camellias, a daphne and a multitude of bulbs have been planted and will be blooming in months to come.

Don't forget to check out the labyrinth, also!



VENUS BAY ANGLING CLUB NEWS

The Venus Bay Angling Club will hold the next fishing competition on the long weekend starting 6.00 a.m. Friday and finishing at 3.00 p.m. on the Monday. There will be a weigh in each day between 4-6p.m. Friday, 4-8p.m. Saturday, 4-6 Sunday and the final weigh in on Monday 2.30 -3.00 p.m.

1st prize for financial members is a \$50.00 voucher from our wonderful sponsors, The Cavity. Visitors are most welcome to join in the fun for a \$5 entry fee which also entitles you to join us for the Saturday night BBQ at the Club. Meat is provided and we ask everyone to bring along a salad/dessert/hot dish to share.

We have some great raffle prizes as well as the members draw. If you haven't fished before and would like to give it a go, pop down to the Club - Gerald's Shed at the jetty - and get some info. At the moment the Shed is open 4-6p.m. on Friday and Saturdays. Membership is only \$30.00 per year per family.

Some of our VBAC members volunteering at the Bunnings sausage sizzle, doing a great job. We'll be at the opening of the new Wonthaggi store on the 8th July, if any members would like to help out please contact Terry on 0419301847. This will be a big day with lots of entertainment and food stalls so the more volunteers the better!!



LOCAL COUNCILLOR UPDATE

The R Word

So its rolling around to rates time again with lots going on locally and state wide in conversations about the shift to the regions and how our rates are trying to do too much. On your own rates, you should see a reduction this year, that's not because I've worked a miracle but that this year farming land is being hit hard with agricultural land prices jumping sky high, other townships have also had big jumps and ours are stabilising. We'll carry less of the South Gippsland pie this year.

If you'd like to know more about how the current system works, please look at this video or contact the rates team. [Rates - South Gippsland on Vimeo](#)

After the Rates Committee meeting held at the Tarwin Hall at the beginning of the year the following has occurred;

1. At my request council have committed to a full review of South Gippsland's differentials in the next financial year in recognition of historical decisions not meeting the needs of now, our differentials are a way of recognising the different ways people use land across the Shire.
2. A State Govt parliamentary inquiry into how councils are funded and what cost shifting from State Govt needs to be addressed was announced. Council have agreed to a working group including myself to write a full submission to the Parliamentary Inquiry.

"The Legislative Council has voted to establish an inquiry into local government funding and service delivery. The terms of reference include the effects of cost-shifting from the state and federal governments, whether councils are delivering on their core service objectives and the overall revenue structure of local government." (MAV - [Inquiry must find balance for councils amid cost shifting | MAV website](#))

3. This inquiry will also pick up a 2020 review of the rates system, most of your complaints about the rates system being unfair are backed up in this document. Nothing ever came of the recommendations.... Read the 2020 report here if you are interested - [Local Government Rating System Review Final Report March 2020.pdf \(localgovernment.vic.gov.au\)](#)

When it comes time for public submissions I'll make sure it's shared on socials and encourage you all to share your experiences, this is our chance to be heard as coastal, boom and bust communities going through growth and needing strategic investment in health, transport, infrastructure (personally I'm worried about poo and the capacity of our businesses 😊).

The street upgrade and finishing off the skate park with some tweaks is starting this month, I believe the contractors are setting up an office in the grass car park to help things go smoothly but please be a bit patient as we get a safety upgrade and face lift for the main drag.

On that note have a great month, stay warm and stay away from that pesky winter black dog.

Cheers, Cr. Sarah Gilligan

ArtCubes in South Gippsland

ArtCubes is an exciting new project which aims to support creativity across South Gippsland by providing unique, mobile exhibition and creative spaces for local artists to showcase their talents and foster a vibrant cultural atmosphere.

Designed and delivered by South Gippsland Shire Council the cubes have been created from old shipping containers. They are lined with ply and feature two opening container doors, two windows, solar panels, as well as internal and external lighting. Each ArtCube is completely self-sufficient, enabling them to be located in remote and unexpected locations, as well as in town centres, travelling as a bunch of three, or as single units.



The ArtCubes are designed to encourage creative experimentation and expression and offer unusual creative possibilities, for artists, performers and community members, as stand-alone venues, or in the context of a larger event or festival.

The project was funded through the State Government's Outdoor Activation Grant (\$95,000) and Council's COVID Community Support Program (\$85,000) and will be relocated around the Shire. The first towns that have been confirmed to host the cubes are Loch, Mirboo North and Fish Creek, but Council is eager to hear from other communities who might also like to use the ArtCubes for future exhibitions.

The ArtCubes are versatile and adaptive structures that can be easily transported and set up in various locations within the shire. These fixable spaces will serve as immersive environments where art enthusiasts and visitors can experience captivating installations and thought-provoking artistic displays.

South Gippsland Shire Council invites the public to embrace this exciting new project, supporting and engaging with the arts to build community vibrancy. By bringing art to the doorstep of our towns, the ArtCubes initiative promises to unleash a wave of creativity and cultural exchange.

To find out more about the cubes, please visit: <https://visitsouthgippsland.com.au/artcubes/>

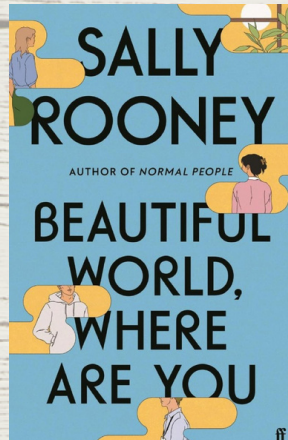


**Mondays 10.00 -
12.00**

**Silver Banksia Plant
group**



**Book Club
2nd Tuesday
of the Month
5.00 - 6.30**



**Current
book**

**FREE Community
Lunch
Wednesdays 12.00**



**Sewing mornings
every wednesday**

BYO Project or help with upcycling projects

**Ukulele
Thursdays 7.00 - 8.30**



**Playgroup Thursdays
9.30 - 11.00**

APPLICATIONS NOW OPEN – RECYCLING COORDINATOR – VENUS BAY COMMUNITY CENTRE

We are now taking formal applications for the role of Community Enterprise Coordinator at Venus Bay Community Centre. The role is a parental leave position and is part time – 15 hours per week spread over 3 days each week, with Saturdays being essential.

The person we hope to find has retail experience, strong communication skills, the ability to work with a diverse team of staff and volunteers, and has a fun, can-do attitude. Award rates apply and full training will be provided.

Applications in writing detailing skills, experience and interest **close Friday 16 June**. For position description, please contact info@vbcc.org.au

Volunteers Opportunities with **Ambulance** Victoria



VENUS BAY and DISTRICT



The **TEAM in BLUE** is here for **YOU** when **YOU** need us.

PEOPLE NEED C.E.R.T.

C.E.R.T. NEEDS PEOPLE

To join us scan QR Code URL for further information or follow us on Facebook.

Email: vbdcert@gmail.com





Life Saving Victoria

Gippsland public rescue equipment pilot project update

The trial of public rescue equipment at Venus Bay continues to evolve. Following community consultation and input from subject matter experts, a prototype was developed by CartGiS. The prototype was recently presented onsite at Venus Bay Surf Life Saving Club, to South Gippsland Shire Councillor Sarah Gilligan, and representatives from Parks Victoria, Venus Bay Surf Life Saving Club and Life Saving Victoria.

Functions of the equipment include emergency communication capabilities via call button technology, instructional signage, a rescue tube, and a QR code for accessing further project information and providing feedback.

An updated proposal will be provided to Parks Victoria for a pilot of the rescue equipment units, with the aim to be installed before summer at key access points on Venus Bay beaches No.1 to No.5. An evaluation plan is also being developed which will include ongoing community input throughout the trial.

Please contact research@lsv.com.au if you have any enquiries.



Victorian Sick Pay Guarantee

38 hours a year sick and carer's pay for casual and contract workers.

We can help you sign up today.



Partnering with

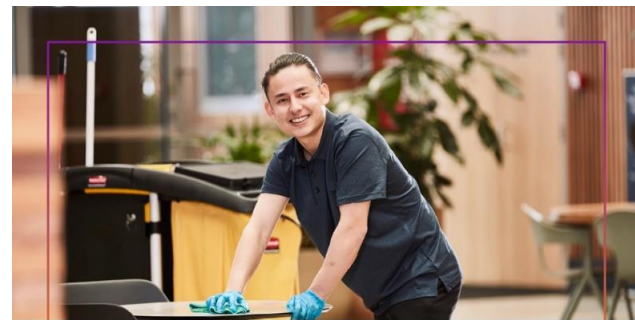


The Venus Bay Community Centre is an official community outreach provider for the Victorian Sick Pay Guarantee.

The program provides eligible casual, contract workers and self employed persons with up to 38 hours a year of sick and carer's pay. It means you can stay home when you need to and not miss out on pay.

Drop in and we can assist you to work out if you are eligible and register for the program.

You must be registered in advance to access this support. Speak to us today if you need a hand to sign up or make a claim.



Sick and carer's pay for casual and contract workers.

Don't wait until you're sick. We can help you sign up today.

vic.gov.au/sickpayguarantee

Partnering with



Power Saving Bonus

DID YOU KNOW?

THERE IS A NEW ROUND OF THE VIC STATE GOV



\$250 POWER SAVING BONUS

SCHEDULED TO REMAIN OPEN UNTIL 31 AUG 2023

Staff at the Community Centre can also help you out with the Power Saving Bonus, if you claimed this prior to March 23rd you are now eligible to claim another \$250.

Bring a full copy of your bill and your bank account details in and we can process it for you.



PLAYGROUP PAUSE

This Thursday (June 1) will be our last Community Playgroup for a while. Since the Shire changed their supported Playgroup in Tarwin Lower to the same day & time, we've seen declining attendance and we don't want to replicate something that is already happening in our small community. We are pleased to support programs that engage with our young families and it's great to see the playgroup hosted at Tarwin Lower Primary School being so well supported. This also encourages engagement and future enrolments at our great local Primary School. With enrolments currently sitting at 35 children, and many more young families and children coming to the area, it will be great to see enrolments at the school increase.

The Community Playgroup at the Community Centre has been going -on and off- for nearly a decade. At times it works, and at other times it's appropriate to take a break and reassess. We will continue to look for ways to engage with our young families and work together to provide services and programs to meet the needs of our young community members. Watch this space for more ideas as spring emerges – and please reach out if you have a great idea that you'd like to see happen!

We've been so fortunate to have Tiarni Douglas Johnson to help welcome families and coordinate the Playgroup for us at the Centre – she's a wonderful asset to our community – thank you T!

In the meantime – the Shire are providing a consultation on Children and Family services – take the opportunity to have your say about what is important to you and your family – link [here](#). Or <https://yoursay.southgippsland.vic.gov.au/early-years>

We know it would be great to have a local Kinder, and also childcare services – these things take lots of community advocacy, and time to come to fruition – so have your say about what is important to you and your family.

Kinder enrolment information on following page – open now for 3 – year old, and 4-year old Kinder. Registration by 30 June.



Council is developing a new Children and Families Plan which is part of our commitment to supporting children and families to feel they belong and can be happy, healthy, and develop to their full potential. The Plan will concentrate upon children aged up to 12 years and their families, and we will develop the Plan in partnership with service providers and our community.

Council has an important role in supporting children and families, as do many other organisations and services in South Gippsland. We deliver maternal and child health and immunisation services, run supported playgroups and new parent programs, operate a centralised registration system for kindergarten, and provide buildings and spaces where early years programs and services can operate from.

Council also provides universally accessible facilities and services which are very important in the lives of children and families such as playgrounds and open space, swimming pools and leisure centres, libraries, community events and social support services.

We need your involvement to help us understand more about what is important to children and families, and what might need to change to better support you and your family.

SOUTH GIPPSLAND

Kindergarten Central Enrolment



CENTRAL ENROLMENT NOW OPEN

To register your child for three-year-old or four-year-old kindergarten for next year, visit the South Gippsland Shire Council website from 1 May and complete a registration form nominating your kindergarten preferences.

To be included in the first round offers you must register by 30 June.

You can register at:

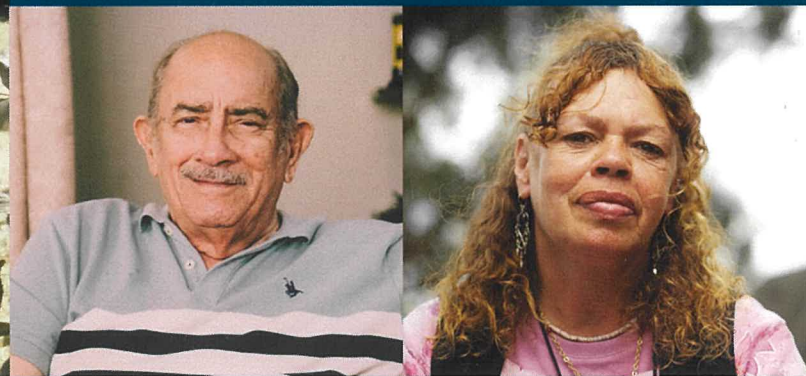
www.southgippsland.vic.gov.au/centralenrolment

For more information, please phone 5662 9200 or text your contact details to 0447 965 850 and we will call you back.





Are you getting older and finding it harder to manage on your own?



Would you like some help, but you have no idea who to ask or where to go?

Speak to the care finders at Latrobe Community Health Service today.

Care finders can help you understand what aged care services are available, and find and choose the services that are relevant to you.

We are:

- People you can trust
- Here to help you understand and choose the aged care services you need
- Your ally – we will talk to other service providers on your behalf (if you want us to) and check in every now and again to make sure everything is OK.

If you:

- are older than 65 (or older than 50 and identify as Aboriginal or a Torres Strait Islander), and
- you have no one who can help you, or who you trust to support you, and
- you need extra help communicating, understanding, information, or engaging with aged care or government services...

We can help!



1800 242 696

lchs.com.au

Contact us today

phn
GIPPSLAND
An Australian Government Initiative

Latrobe Community Health Service



Do you have a few hours to spare?

We are always looking for volunteers to help out at the community centre...do you have any particular skills you can contribute? Or perhaps you have a bit of time to spend helping with filing in the office or sorting donations for the Recycling enterprise?

Every bit counts and every bit is appreciated. We could not function without our fabulous team of volunteers.

So why not come and join in!

Situated at 27 Canterbury Road, Venus Bay.

Phone: 5663 7499, Send mail to Post Office Box 786, Venus Bay 3956

Email: info@vbcc.org.au Website: www.vbcc.org.au

Opening hours reflect the season - please check our website or Facebook for details

or call Alyson 0416 242 331

Venus Bay Community Centre is supported by:
Department of Health & Human Services (Victoria) and the Commonwealth Government, South Gippsland Shire Council.

Our website is www.vbcc.org.au

Find current and back issues of Matter Of Fact on our website. Please contact us if you wish to be on our email distribution list.



VENUS BAY
COMMUNITY CENTRE